

Report of a birding trip to

# Montana & Wyoming

From 2 June till 22 June 2001

**Participants:**

Jan van der Laan

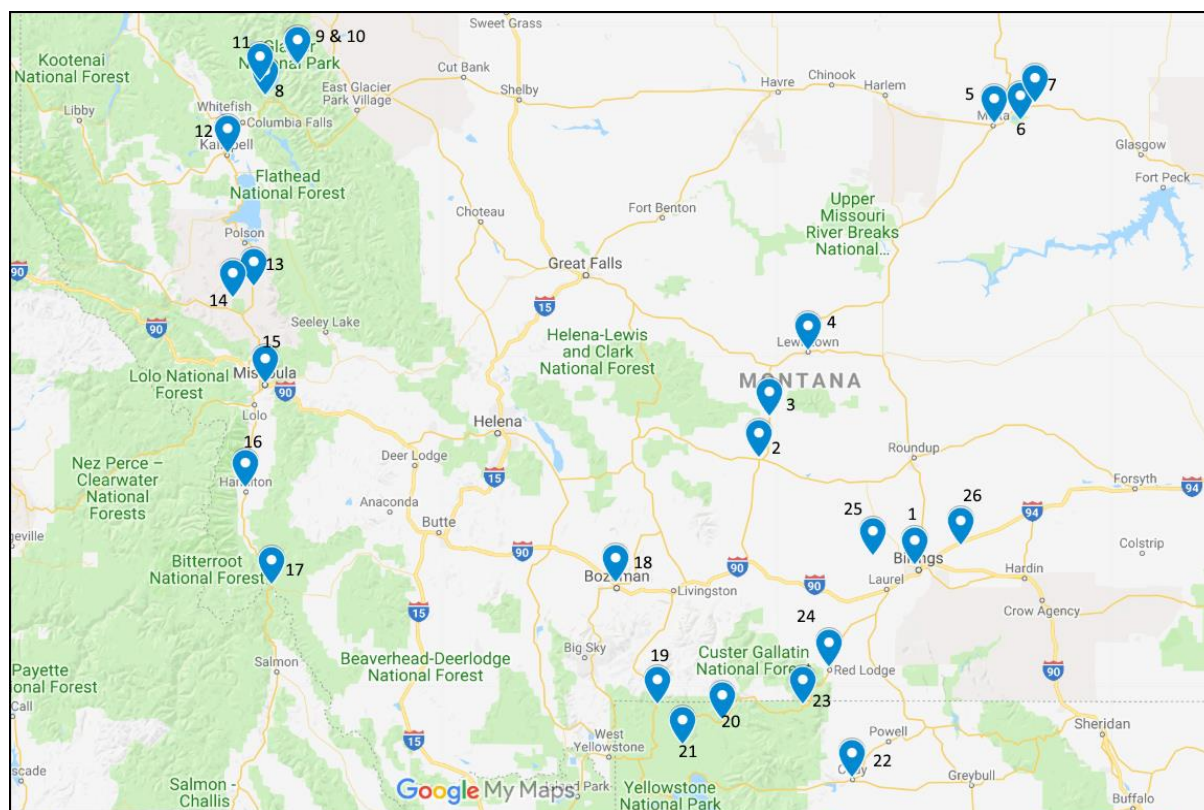
Marieke Wiringa

Joop van der Laan



White-tailed Ptarmigan, 8 June 2001, Logan Pass, Glacier NP, Montana; © Jan van der Laan.

## Maps



- |                               |   |
|-------------------------------|---|
| 1. Billings                   | 14. National Bison Range                |
| 2. Harlowton                  | 15. Missoula                            |
| 3. Judith Gap                 | 16. Bitterroot in Hamilton              |
| 4. Lewiston                   | 17. Chief Joseph Pass, Idaho            |
| 5. Malta                      | 18. Bozeman                             |
| 6. Bowdoin NWR                | 19. Mammoth Hot Springs, Yellowstone NP |
| 7. Buffalo Hot Springs        | 20. Soda Butte, Yellowstone NP          |
| 8. Apgar                      | 21. Canyon, Yellowstone NP              |
| 9. Hidden Lake Trail          | 22. Cody                                |
| 10. Logan Pass Visitor Center | 23. Beartooth Pass Vista Point          |
| 11. McGee Meadow              | 24. Red Lodge                           |
| 12. Kalispell                 | 25. Molt                                |
| 13. Ninepipe NWR              | 26. Arrow Creek.                        |





Left: typical Montana landscape in the eastern part, 7 June 2001; right: Glacier NP, Montana, 8 June 2001; © Jan van der Laan.



Snow at the Chief Joseph Pass, Idaho, 13 June 2001; © Jan van der Laan.



Left: recovering pine trees in Yellowstone NP, 15 June 2001; right: rock formation near Cody, Wyoming, 16 June 2001; © Jan van der Laan.

## Introduction

Between June 2<sup>nd</sup> and June 22<sup>nd</sup> 2001 I went to Montana and Wyoming for a holiday. I was there with my girlfriend Marieke Wiringa and our 6-month old daughter Joop. For us it was our first test to travel with our new born. Our main objective was to have a nice and pleasant holiday, for me also on the agenda was to see some of the grassland and Rocky Mountains specialties plus some photographing. This proved to be a good combination and we had a pleasant holiday.

## Recommended Literature and Trip Reports

For birding I used the brilliant *The Sibley Guide to Birds* by David Sibley published in 2000 (ISBN 0-679-45122-6). Another useful identification guide is the *Birds of North America* by Kenn Kaufman also published in 2000 (ISBN 0-395-96464-4). For finding the birds I used *Birding Montana* by Terry McEneaney, published by Falcon Guides in 1993 (ISBN 1-56044-232-8) and *A Birder's Guide to Wyoming* by Oliver K. Scott, published by the American Birding Association in 1993 (ISBN 1-898788-02-7).

For travel guides I used *Montana Handbook including Glacier National Park* by W. C. McRae and Judy Jewell, published by Moon Travel Handbooks in 1999 (ISBN 1-56691-142-7) and *Wyoming Handbook Including Yellowstone and Grand Teton National Parks* by Don Pitcher published in 2000 (ISBN 1-56691-204-0).

## Acknowledgments

I would like to thank the following persons: Jur en Netty van der Laan, Matty Wiringa, Annet Meijers, Terry McEneaney for providing me useful information on Mountain Plovers and June Eckwall for driving me around to find Sharp-tailed and Sage Grouse around Arrow Creek, Montana.

## The Species Accounts

Finally In 2018 I finished this report and I follow the common and scientific names and family order of the IOC [www.worldbirdnames.org](http://www.worldbirdnames.org), version 8.2. Specialities for the region are in capitals, but these are not necessary endemic for the region.

Alkmaar, notes made in 2001, in November 2018 finally the digital version (I found my notebook again!).

If you have any remarks, questions or suggestions, please contact:

Jan van der Laan  
Roemer Visscherstraat 5  
1814 EL Alkmaar  
The Netherlands  
Telephone: ++31-72-5203091  
E-mail: [jvdlaan@xs4all.nl](mailto:jvdlaan@xs4all.nl)

## Itinerary

- 2 June** Departure from **Amsterdam** to **Minneapolis**. At Schiphol I bought a 400 mm Sigma Apo tele lens, which I had used till 2014. From Minneapolis we took a flight to **Billings, Montana**. Arrival in the evening. Collected our rental car and went to our motel in **Billings**. First birds were Mourning Dove, Common Grackle, Common Starlings and House Sparrows.
- 3 June** We drove from **Billings** to **Harlowton**. Along the **road 191** I saw my first **FERRUGINOUS HAWK**. We found a nice motel at Harlowton and after a heavy thunderstorm I went out birding near **Judith Gap** for several prairie species. I managed to find Golden Eagle, Grey Partridge, Long-billed Curlew, Marbled Godwit, Upland Sandpiper, **SPRAGUE'S PIPIT**, Horned Lark, Vesper Sparrow, **THICK-BILLED LONGSPUR**, **CHESTNUT-COLLARED LONGSPUR**, Western Meadowlark, Common Raven, **BOBOLINK** and Lark Bunting. My main goal was Mountain Plover, but I couldn't find any.
- 4 June** In the morning we searched the area around **Judith Gap** again, but no Mountain Plovers. Birds we did see were Blue-winged Teal, Golden Eagle, Hen Harrier, Red-tailed Hawk, Sandhill Crane, Killdeer, Long-billed Curlew, Spotted Sandpiper, Mourning Dove, Eastern Kingbird, Raven, Black-billed Magpie, Mountain Bluebird, Horned Lark, Tree, Barn and Cliff Swallows, American Yellow Warbler, Vesper and Savannah Sparrows, Chestnut-collared and Thick-billed Longspurs, Western Meadowlark, House Finch, Red-winged and Yellow-headed Blackbirds. We continued to **Lewiston**, where we checked-in during heavy rains in a motel annex gun shop with enough guns and rifles to start a small guerrilla war!
- 5 June** From **Lewiston** we drove over the 191 in the direction of **Malta**. At the **Charles M Russell NWR** I tried to look for Mountain Plovers again, but we got stuck in the mud after a mile. I walked back to the road to in order to get help and suddenly I realized I was in a bad road movie! Fortunately, the second car stopped, a pick-up truck with two men called Mike and Pete, with cowboy hats and a big rifle under the rear window. They told me not to worry and the drove in some direction to get a second bigger pickup truck. After some struggle we managed to get the car out and we could continue our way to **Malta**. In **Malta** we took a nice motel for two nights. In the afternoon we visited the **Buffalo Hot Springs**. Birds we saw were American White Pelican, Northern Pintail, Blue-winged Teal, Ferruginous Hawk, Red-tailed Hawk, Northern Harrier, Pheasant, Grey Partridge, Long-billed Curlew, Ring-billed and California Gull, Mourning Dove, Western Kingbird, Eastern Kingbird, American Robin, Common Raven, American Magpie, American Crow, Barn and Cliff Swallows, House Finch, Savannah Sparrow, Grasshopper Sparrow, Red-winged Blackbird, Cowbird, Common Grackle and Western Meadowlark.
- 6 June** We visited **Bowdoin NWR**. My main target here was Baird's Sparrow. The best place here is supposed to be the grassy area between the headquarters and Long Island. I managed to find one or two birds and I thought I had photographed one of them, but at home it proved to be a Savannah Sparrow! Other birds in this very rich and pleasant reserve were Black-necked Grebe, American White Pelican, Double-crested Cormorant, Mallard, Gadwall, Pintail, American Wigeon Northern Shoveler, Blue-winged Teal, Canvasback, Lesser Scaup, Ruddy Duck, Northern Harrier, Swainson's Hawk, Ferruginous Hawk, Golden Eagle, Pheasant, American Coot, Killdeer, Grey Plover, American Avocet, Black-necked Stilt, Willet, Marbled Godwit, Franklin's Gull, California Gull, Ring-billed Gull, Common Tern, Mourning Dove, Western Kingbird, Eastern Kingbird, Loggerhead Shrike, American Magpie, Tree, Bank, Barn, Cliff and Northern Rough-winged Swallow, Common Grackle, Cowbird, Red-winged & Yellow-winged Blackbirds, House Finch, House Sparrows and Eurasian Starling.
- 7 June** We drove all the way over **highway 2** via **Havre, Shelby, Kalispell** to **Glacier National Park** in the Rocky Mountains, an amazing ride, with the change from grassland prairie to the highest mountains. We took a nice motel at **Apgar** on the shores of **Lake McDonald**. Birds on our way were American White Pelican, Great Blue Heron, Mallard, Blue-winged Teal, Northern Shoveler, Northern Pintail, Northern Harrier, Swainson's Hawk, Red-tailed Hawk, American Kestrel, Marbled Godwit, California Gull, Mourning Dove, Rufous Hummingbird, Northern Flicker, **LEAST FLYCATCHER**, Hammond's Flycatcher, Western & Eastern

Kingbirds, American Crow, Common Raven, American Magpie, Horned Lark, Tree, Barn & Cliff Swallows, Violet-green Swallow, Red-breasted Nuthatch, Brown Creeper, Golden-crowned Kinglet, American Robin, American Yellow Warbler, Orange-crowned Warbler, Audubon's Warbler, Cedar Waxwing, Savannah Sparrow, White-crowned Sparrow, Dark-eyed 'Oregon' Junco, Cowbird, Western Meadowlark, Yellow-headed & Red-winged Blackbird, Common Grackle, Eurasian Starling, House Sparrow and Pine Siskin.

- 8 June** Today we took one of the most beautiful roads in North America, the **Going-to-the-Sun Highway** which runs between **Lake McDonald** and **Saint Mary Lake**. At the continental divide at c 2200 m is **Logan Pass** with a visitor center. There I asked where there were White-tailed Ptarmigans and there they told me they were along the **Hidden Lake Trail**. So I left Marieke and Joop behind and I climbed the snowy path. I spoke two girls with skis on their backs who had just seen ptarmigans and within half-an-hour I found two birds. There were very unobtrusive and I could approach them at a distance of one foot! Later back at the visitor center we took some drinks, watched a **SLATE-COLOURED FOX SPARROW** and drove back after photographing a large ground hog, which was drinking melting snow from under the cars! The next day we heard the pass was prohibited again after heavy snowfall, so we were quite lucky to get there anyway. Later that day I visited **McGee Meadow** for LeConte's Sparrow, but no luck. Birds seen that day were Sharp-shinned or Cooper's Hawk, **WHITE-TAILED PTARMIGAN**, Least Flycatcher, Rufous Hummingbird, Tree, Barn, Cliff & Violet-green Swallows, Red-breasted Nuthatch, Golden-crowned Kinglet, Mountain Bluebird, Varied Thrush, American Robin, American Pipit, Orange-crowned & Audubon's Warblers, Red-winged Blackbird, Pine Siskin and Red Crossbills (one of the many types).
- 9 June** We spent the whole day around **Apgar** around **Lake McDonald** and I did some birding around the motel grounds. Birds there were Rufous Hummingbird, Downy Woodpecker, **RED-NAPED SAPSUCKER**, Warbling Vireo, **CASSIN'S VIREO**, Common Raven, Tree, Barn & Violet-green Swallows, Black-capped Chickadee, Red-breasted Nuthatch, Golden-crowned & Ruby-crowned Kinglets, Swainson's Thrush, Cedar Waxwing, Townsend's, Orange-crowned & Audubon's Warblers, American Redstart, Dark-eyed Junco, Red-winged Blackbird and Evening Grosbeak. In the afternoon I visited **McGee Meadow** again but still no LeConte's Sparrows, birds seen there were Wilson's snipe, **WILLOW FLYCATCHER**, Grey Jay and Red-winged Blackbird.
- 10 June** In the morning some Vaux's Swifts appeared above the hotel. After three nights we left **Apgar** and drove to **Kalispell**. We took a hotel in downtown **Kalispell** and there we saw on the television news that Timothy McVeigh was finally executed. In the afternoon we visited the **Woodland Park**, a nice suburb park with Barrow's Goldeneyes in it. Other birds seen there were Mallard, Wood Duck, Canada Goose (larger form), Cooper's hawk, American Kestrel, California & Ring-billed Gulls, Mourning Dove, Red-shafted Flicker, Western Wood-Pewee, Warbling Vireo, American Yellow Warbler, Brewer's Blackbird and Lazuli Bunting.
- 11 June** We drove from **Kalispell** along the western shore of **Flathead Lake**. On our way I checked some lakes and ponds for Hooded Merganser, like **Ashley Creek**, **Church Slough**, **Split Pond** and a pond just before **Somers**. We paid a short visit to **Ninepipe NWR** and after that we visited the **National Bison Range** where we saw Bisons and Pronghorns. In the evening we reached **Missoula** where a motel was quickly found. Birds seen today were Double-crested Cormorant, Lesser Scaup, Redhead, Bufflehead, Ruddy Duck, Red-tailed Hawk, Northern Harrier, Osprey, American Kestrel, American Coot, Sora, Spotted Sandpiper, Killdeer, Black-necked Stilt, California, Ring-billed & Franklin's Gulls, Common Tern, Mourning Dove, Northern Flicker, Vaux's Swift, six species of swallow, Western Wood-pewee, American Robin, Mountain Bluebird, House Wren, Song Sparrow, Cowbird and Brewer's, Red-winged & Yellow-headed Blackbirds.
- 12 June** A rainy day with a lot of wind. In the morning we visited a picnic place nears the **Bitterroot River** just south of **Missoula**, but after more rain we continued to **Hamilton** where we checked-in in a typical US-style motel. Near that motel there was a small park along the same Bitterroot River, where we took a short walk. I left the path to have a better view of the river and there it was swimming in the river, a



- female **HOODED MERGANSER**, another lifer for me! Birds seen today were Common Merganser, Hooded Merganser, Green-winged Teal, Northern Shoveler, Turkey Vulture, Red-tailed Hawk, Red-naped Sapsucker, Vaux's Swift, Willow Flycatcher, Black-capped Chickadee, Common Raven, American Crow, American Magpie, Cassin's Vireo, Grey Catbird, Song Sparrow, House Finch and Red-winged Blackbird.
- 13 June** We drove from **Hamilton** over highway 93 and 43 to **Butte** and passed the **Lost Trail Pass** and **Chief Joseph Pass** in Idaho, both completely covered in snow. In Butte the snow was less and we had lunch there before we drove over the interstate 90 to **Bozeman**. Lots of rain and snow en route, but we finally reached Bozeman and found a motel there. Due to the bad weather only a few birds were seen: Great Blue Heron, American Wigeon, Common Merganser, Golden Eagle, Swainson's hawk, Wilson's Snipe, Great Phalarope, Killdeer, Belted Kingfisher and Lewis's Woodpecker.
- 14 June** We drove from **Bozeman** to **Yellowstone NP**. A nice drive along the Yellowstone River. We found a sleeping place at **Mammoth Hot Springs**, but only for one night. Around the cabin a lot of squirrels were staying. Weather was finally improving, with some rain in the afternoon. Birds seen today were Lesser Scaup, Ruddy Duck, Red-tailed Hawk, Bald Eagle, Osprey, White-throated Swift, Red-naped Sapsucker, Northern Flicker, American Dipper, Ruby-crowned Kinglet, Audubon's Warbler, Orange-crowned Warbler, American Robin, Cassin's Finch, Pine Siskin, Red Crossbill, 'Pink-sided' Junco, Yellow-headed Blackbirds, Red-winged Blackbirds, Common Grackle, Clark's Nutcracker, Raven and American Magpie. Dinner in a local restaurant were Joop knocked her head. No damage done.
- 15 June** In the morning we drove around in **Yellowstone**, saw Moose, Black Bear and in the afternoon Brown Bear (mother with two cubs). Failed to see Wolf, but again several Bisons. Later in the afternoon we checked in at **Canyon**, where we had another cabin. Behind the cabin an old Bison was walking around looking harmful, but was unobtrusive for men. We also visited **Soda Butte**. Birds seen today were Mallard, Lesser Scaup, Canada Geese, American Coot, Red-tailed Hawk, American Kestrel, Mourning Dove, White-throated Swift, the usual swallows, Mountain Blackbird, American Robin, Townsend's Solitaire, Horned Lark, Common Raven, American Crow, Red-breasted Nuthatch, Ruby-crowned Kinglet, Orange-crowned Warbler, Audubon's Warbler, Western Meadowlark, Brewer's Blackbird, Brown-headed Cowbirds. Pink-sided Junco, Pine Siskin and Clark's Nutcracker.
- 16 June** After breakfast we drove from **Canyon** to **Cody**. On our way we visited **Yellowstone Lake** and the **Buffalo Reserve**. Birds we observed were Mallard, Northern Shoveler, American Wigeon, Lesser Scaup, Ring-necked Duck, Barrow's Goldeneye, Bufflehead, Ruddy Duck, Common Merganser, Canada Goose, American Coot, Western Grebe, Common Loon, California Gull, Red-tailed Hawk, Western Osprey, Turkey Vulture, American Kestrel, Killdeer, Black-necked Stint, Mourning Dove, Belted Kingfisher, Northern Flicker, an unknown hummingbird, White-throated Swift, Clark's Nutcracker, Eastern Kingbird, Pine Siskin, Green Towhee, Cassin's Finch, Audubon's Warbler, Warbling Vireo, Ruby-crowned Kinglet, Brown-headed Cowbirds and American Robin. In **Cody** we took a motel in the southern part of town. The people there were very surprised we walked from the motel to the shopping mall 500 meters further on. In the evening we saw a Common Poorwill near the motel.
- 17 June** In the morning I birded the desert areas **east of Cody**. My main target was Mountain Plover but after scanning for hours I had to give up. In the afternoon we visited an Indian Festival opposite our motel. One group was mimicking the dance of Greater Prairie Chickens! We stayed in the same motel in **Cody** for the night. Birds observed (mainly east of Cody) were Western Grebe, Mallard, Red-tailed Hawk, Brewer's Sparrow, Horned Lark, Sage Thrasher, American Robin, Pine Siskin, Warbling Vireo, Common Grackle, Common Nighthawk, Red-winged Blackbird, Eastern Kingbird, Burrowing Owl and American Wigeon.
- 18 June** From **Cody** we drove via the **Beartooth Pass** to **Joliet, Montana**. At the **Beartooth Pass** we had short stop to look for Black Rosy Finches, which were present on the parking area. The road was covered in snow, as was the parking place. We also had an afternoon break at **Red Lodge, Montana**. We made it

to **Joliet in Montana** where we found a motel without any problems. Birds observed at **Beartooth Pass** were Golden Eagle, Ring-necked Duck, Buff-bellied Pipit, **BLACK ROSY FINCH**, Horned Lark, White-crowned Sparrow and Northern Raven. At **Red Lodge** we saw Northern Flicker, Red Crossbill, and American Yellow Warbler. At **Joliet** we saw Turkey Vulture. Red-tailed Hawk, Pine Siskin, Common Nighthawk and Ruby-crowned Kinglet.

**19 June** Today we drove from **Joliet to Billings**, the place where our plane would leave on the 21 June. We quickly found a motel where we would stay for two nights. After dinner, when it was still light, I birded the area around **Molt**, northwest of Billings) to look for Sharp-tailed Sandgrouse. Between Joliet and Billings we saw Western Osprey, American Kestrel and Red-tailed Hawk, Barn Swallow, American Cliff Swallow, Northern Rough-winged Swallow, Tree and Violet-green Swallow. Around Molt I saw Lark Bunting, a probable Baird's Sparrow, two Long-eared Owls, Western Kingbird, Eastern Kingbird, Golden Eagle, Red-tailed Hawk, Swainson's Hawk, Mourning Dove, a probable Sharp-tailed Grouse (it flew off and disappeared), Vesper Sparrow, Western Meadowlark, Red-winged Blackbird, Yellow-headed Blackbird, Horned Lark, Brewer's Blackbird, Common Grackle and Brown-headed Cowbird.

**20 June** Today was the last full day I had in Montana to do some proper birding. I made an appointment with June Eckwall who would show me the area around Billings and our main target would be Sharp-tailed Grouse and Prairie Falcon. We birded generally around **Arrow Creek**, east of Billings. We searched till noon, but no falcons or grouse were found. Best birds were Swainson's Hawk, Red-tailed Hawk, American Goldfinch, Lark Bunting, Lark Sparrow, Savannah Sparrow, Vesper Sparrow, Brown Thrasher, Eastern Kingbird, Western Kingbird, Spotted Towhee, Say's Phoebe, Bullock's Oriole and Common Nighthawk. Back in **Billings** I found two House Finches.

**21 June** The last morning was spent in **Billings** with relaxing and looking around in Billings. In my notebook only Turkey Vultures were mentioned plus 'common birds'. Around noon we took the Northwestern flight to **Chicago**. From there we took the plane to **Schiphol, Amsterdam** where we arrived the next day.

**22 June** Arrival at **Schiphol, Amsterdam**.



Marieke and Joop, 5 June 2001, Bowdoin NWR, Montana.





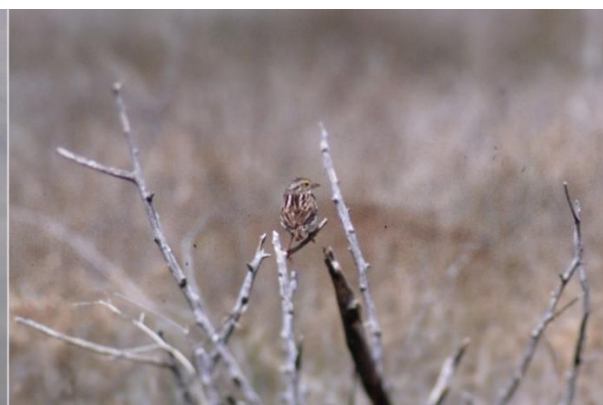
Left: Long-billed Curlew, right: Marbled Godwit, both on 3 June 2001, Judith Gap, Montana; © Jan van der Laan.



Left: Vesper Sparrow; right: Sandhill Cranes, both on 4 June 2001, at Judith Gap, Montana; © Jan van der Laan.

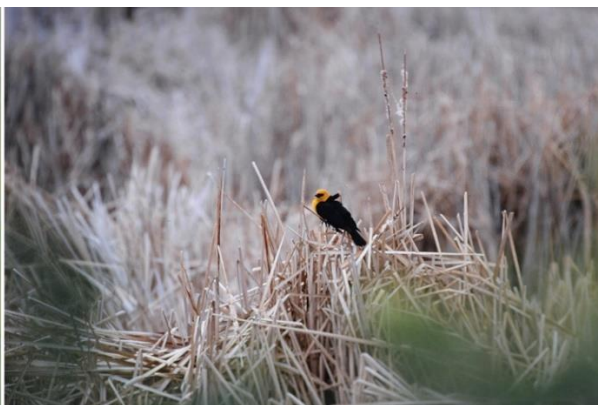


Left: Golden Eagle, 4 June 2001, Judith Gap, Montana; right: Ferruginous Hawk, 5 June 2001 between Buffalo Hot Springs and Malta, Montana; © Jan van der Laan.

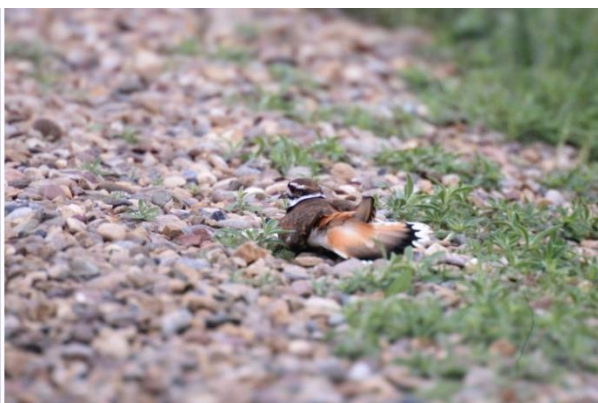


Left: Western Meadowlark, 5 June 2001, Malta, Montana; right: Savannah Sparrow, 6 June 2001, Bowdoin NWR, Montana; © Jan van der Laan.





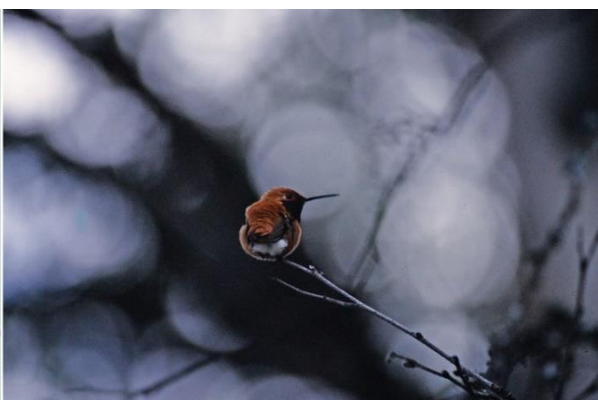
Left: Red-winged Blackbird; right: Yellow-headed Blackbird, both on 6 June 2001, Bowdoin NWR, Montana; © Jan van der Laan.



Left: Common Nighthawk; right: Killdeer, both on 6 June 2001, Bowdoin NWR, Montana; © Jan van der Laan.



Left: male White-tailed Ptarmigan, right: female White-tailed Ptarmigan, 8 June 2001, Logan Pass, Glacier NP, Montana; © Jan van der Laan. Birds were so close I had to step back to get the birds in the frame and in focus.



Rufous Hummingbird, 8 June 2001, Apgar, Glacier NP, Montana; © Jan van der Laan.





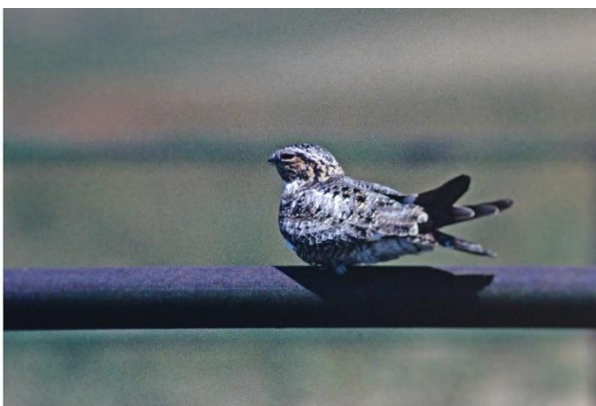
Left: Black-billed Magpie; right: Mountain Bluebird, 15 June 2001, Chittendon Rd, Yellowstone NP, Wyoming. © Jan van der Laan.



Black Rosy Finch, 18 June 2001, Beartooth Pass, Wyoming; © Jan van der Laan.



Left: Turkey Vulture, 18 June 2001 Billings, Montana; right: Eastern Kingbird, 19 June 2001, Molt, Montana; © Jan van der Laan.



Common Nighthawk, 20 June 2001, Arrow Creek, Montana; © Jan van der Laan.

**001. Canada Goose** - *Branta canadensis*

03-06	c 10	along the US Highway 191 between Billings and Harlowton, Montana.
10-06	c 30	Woodland Park, Kalispell, Montana.
11-06	c 20	Ninepipe NWR, Montana.
13-06	c 5	between Hamilton and Bozeman, Montana.
15-06	c 30	between Mammoth Springs - Soda Butte - Canyon, Yellowstone NP, Wyoming.
16-06	c 100	between Canyon and Cody, Wyoming.

**002. Wood Duck** - *Aix sponsa*

10-06	5	Woodland Park, Kalispell, Montana.
-------	---	------------------------------------

**003. Cinnamon Teal** - *Spatula cyanoptera*

03-06	2	(pair) along the 191 between Billings and Harlowton, Montana.
10-06	1	between Apgar and Kalispell, Montana.
11-06	2	Split Pond, Reeds Slough, Montana.

**004. Blue-winged Teal** - *Spatula discors*

03-06	1	(male) along the US Highway 191 between Billings and Harlowton, Montana.
04-06	c 10	Judith Gap, Montana.
05-06	c 10	(in total) along the US Highway 191 between Lewiston and Malta, Montana.
06-06	c 10	Bowdoin NWR, Montana.
07-06	c 10	(in total) along the US Highway 2 between Malta and Glacier NP, Montana.

**005. Northern Shoveler** - *Spatula clypeata*

06-06	c 25	Bowdoin NWR, Montana.
07-06	c 10	(in total) along the US Highway 2 between Malta and Glacier NP, Montana.
11-06	c 50	between Kalispell and Missoula, Montana.
12-06	c 25	between Missoula and Hamilton, Montana.
13-06	c 5	between Hamilton and Bozeman, Montana.
16-06	4	between Canyon and Cody, Wyoming.

**006. Gadwall** - *Mareca strepera*

06-06	c 10	Bowdoin NWR, Montana.
11-06	2	Split Pond, Reeds Slough, Montana.

**007. American Wigeon** - *Mareca americana*

06-06	c 5	Bowdoin NWR, Montana.
13-06	3	between Hamilton and Bozeman, Montana.
16-06	4	between Canyon and Cody, Wyoming.
17-06	2	East of Cody, Wyoming.

**008. Mallard** - *Anas platyrhynchos*

Quite common, seen daily with up to c 25 birds each day, both in Montana and Wyoming,

**009. Northern Pintail** - *Anas acuta*

03-06	1	(male) along the 191 between Billings and Harlowton, Montana.
04-06	c 10	Judith Gap, Montana.
05-06	c 6	along the US Highway 191 between Lewiston and Malta, Montana.



- |       |      |  |
|-------|------|--|
| 06-06 | c 10 | Bowdoin NWR, Montana.                          |
| 07-06 | c 10 | along the US Highway 2 west of Malta, Montana. |
010. **Green-winged Teal** - *Anas carolinensis*
- |       |   |   |
|-------|---|---|
| 12-06 | 3 | between Missoula and Hamilton, Montana. |
|-------|---|---|
011. **Canvasback** - *Aythya valisineria*
- |       |   |                              |
|-------|---|------------------------------|
| 06-06 | 1 | (male) Bowdoin NWR, Montana. |
|-------|---|------------------------------|
012. **Redhead** - *Aythya americana*
- |       |      |                                       |
|-------|------|---------------------------------------|
| 11-06 | 4    | Ashley Creek, Church Slough, Montana. |
|       | c 10 | Split Pond, Reeds Slough, Montana.    |
013. **Ring-necked Duck** - *Aythya collaris*
- |       |      |                                   |
|-------|------|-----------------------------------|
| 16-06 | c 10 | between Canyon and Cody, Wyoming. |
| 18-06 | 7    | Beartooth, Wyoming.               |
014. **Lesser Scaup** - *Aythya affinis*
- |       |      |   |
|-------|------|---|
| 06-06 | c 10 | Bowdoin NWR, Montana.   |
| 11-06 | c 10 | between Kalispell and Missoula, Montana.                                |
| 14-06 | c 10 | between Missoula, Montana and Yellowstone NP, Wyoming.                  |
| 15-06 | 3    | between Mammoth Springs - Soda Butte - Canyon, Yellowstone NP, Wyoming. |
| 16-06 | c 20 | between Canyon and Cody, Wyoming.                                       |
015. **Bufflehead** - *Bucephala albeola*
- |       |   |   |
|-------|---|---|
| 11-06 | 2 | Missoula, Montana.                                |
| 16-06 | 2 | (male & female) between Canyon and Cody, Wyoming. |
016. **Barrow's Goldeneye** - *Bucephala islandica*
- |       |      |                                    |
|-------|------|------------------------------------|
| 10-06 | 4    | Woodland Park, Kalispell, Montana. |
| 16-06 | c 25 | between Canyon and Cody, Wyoming.  |
017. **Hooded Merganser** - *Lophodytes cucullatus*
- |       |   |   |
|-------|---|---|
| 12-06 | 1 | (female) Bitterroot River, Hamilton, Montana. |
|-------|---|---|
018. **Common Merganser** - *Mergus merganser americanus*
- |       |   |   |
|-------|---|---|
| 12-06 | 1 | (female) Missoula, Montana.                   |
| 13-06 | 1 | (male) between Hamilton and Bozeman, Montana. |
| 16-06 | 1 | (female) between Canyon and Cody, Wyoming.    |
019. **Ruddy Duck** - *Oxyura jamaicensis*
- |       |      |  |
|-------|------|--|
| 06-06 | c 30 | Bowdoin NWR, Montana.                    |
| 11-06 | c 5  | between Kalispell and Missoula, Montana. |
| 16-06 | 2    | between Canyon and Cody, Wyoming.        |
020. **WHITE-TAILED PTARMIGAN** - *Lagopus leucura*
- |       |   |  |
|-------|---|--|
| 08-06 | 2 | (male & female) Logan Pass, Glacier NP, Montana. |
|-------|---|--|

**021. Grey Partridge** - *Perdix perdix*

03-06	2	Judith Gap, Montana.
05-06	2	along the US Highway 2 between Buffalo Hot Springs and Malta, Montana.

**022. Common Pheasant** - *Phasianus colchicus*

05-06	1	along the US Highway 2 between Buffalo Hot Springs and Malta, Montana.
06-06	1	Bowdoin NWR, Montana.

**023. Common Loon** - *Gavia immer*

16-06	1	Yellowstone Lake, Yellowstone NP.
-------	---	-----------------------------------

**024. Black-necked Grebe** - *Podiceps nigricollis*

06-06	c 25	Bowdoin NWR, Montana.
11-06	c 6	Somers, Montana.

**025. Western Grebe** - *Aechmophorus occidentalis*

16-06	2	Yellowstone Lake, Yellowstone NP.
	1	Buffalo Reserve, Wyoming.
17-06	2	4 miles east of Cody, Wyoming.

**026. Great Blue Heron** - *Ardea herodias*

07-06	1	along the US Highway 2 west of Malta, Montana
13-06	1	between Hamilton and Bozeman, Montana.
16-06	1	Yellowstone Lake, Yellowstone NP.

**027. American White Pelican** - *Pelecanus erythrorhynchos*

05-06	4	along the US Highway 191 between Lewiston and Malta, Montana.
	9	Buffalo Hot Springs.
06-06	c 100	Bowdoin NWR, Montana.
07-06	1	along the US Highway 2 west of Malta, Montana
16-06	c 10	Yellowstone Lake, Yellowstone NP, Wyoming.
	1	Buffalo Reserve, Wyoming.

**028. Double-crested Cormorant** - *Phalacrocorax auritus*

06-06	c 50	Bowdoin NWR, Montana.
11-06	1	National Bison Range, Montana.

**029. Turkey Vulture** - *Cathartes aura*

12-06	1	Hamilton, Montana.
18-06	2	Joliet, Montana
21-06	2	Billings, Montana.

**030. Western Osprey** - *Pandion haliaetus*

11-06	1	Flathead Lake, Kalispell, Montana.
13-06	1	between Hamilton and Bozeman, Montana.
14-06	2	between Missoula, Montana and Yellowstone NP, Wyoming.
16-06	4	Yellowstone Lake, Yellowstone NP, Wyoming.
19-06	1	(nesting) between Joliet and Billing, Montana.

**031. Golden Eagle** - *Aquila chrysaetos*

03-06	1	c 10 km north of Judith Gap, Montana.
04-06	1	Judith Gap, Montana.
06-06	1	Malta, Montana.
13-06	2	between Hamilton and Bozeman, Montana.
18-06	1	during the ride from Cody via Beartooth, Wyoming to Joliet, Montana.
19-06	1	Molt, Montana.

**032. Cooper's Hawk** - *Accipiter cooperii*

08-06	1	(probably) McGee Meadow, Apgar, Glacier NP, Montana.
10-06	1	Kalispell, Montana.

**033. Northern Harrier** - *Circus hudsonius*

04-06	2-3	Judith Gap, Montana.
05-06	1	along the US Highway 191 near Zortman, Montana.
06-06	3	Bowdoin NWR, Montana.
07-06	2	along the US Highway 2 between Malta and Glacier NP, Montana.
11-06	1	(male) Foy's Bend, Montana.

**034. Bald Eagle** - *Haliaeetus leucocephalus*

14-06	1	along highway 89 just before Gardiner, Montana.
-------	---	---

**035. Swainson's Hawk** - *Buteo swainsoni*

06-06	1	Bowdoin NWR, Montana.
07-06	2	along the US Highway 2 between Malta and Glacier NP, Montana.
13-06	1	between Hamilton and Bozeman, Montana.
19-06	1	Molt, Montana.
20-06	1	Arrow Creek, east of Billings, Montana.

**036. Red-tailed Hawk** - *Buteo jamaicensis*

Seen daily in Montana and Wyoming with up to 6 birds each day.

**037. FERRUGINOUS HAWK** - *Buteo regalis*

03-06	1	along the US Highway 191 between Billings and Harlowton, Montana.
05-06	1	along the US Highway 2 between Buffalo Hot Springs and Malta, Montana.
06-06	1	Bowdoin NWR, Montana.

**038. Sora** - *Porzana carolina*

11-06	1	(heard calling) National Bison Range, Montana.
-------	---	--

**039. American Coot** - *Fulica americana*

06-06	c 50	Bowdoin NWR, Montana.
11-06	c 10	Split Pond, Reeds Slough, Montana.
	c 5	Somers, Montana.
15-06	c 10	between Mammoth Springs - Soda Butte - Canyon, Yellowstone NP, Wyoming.
16-06	c 30	Yellowstone Lake, Yellowstone NP, Wyoming.

040. **Sandhill Crane** - *Antigone canadensis*  
 04-06                    3    east of Judith Gap, Montana.
041. **Black-necked Stilt** - *Himantopus mexicanus*  
 06-06                    c 15    Bowdoin NWR, Montana.  
 11-06                    2    Ninepipe NWR.  
 16-06                    2    Yellowstone Lake, Yellowstone NP.
042. **American Avocet** - *Recurvirostra americana*  
 06-06                    c 30    Bowdoin NWR, Montana.
043. **Grey Plover** - *Pluvialis squatarola*  
 06-06                    3    Bowdoin NWR, Montana.
044. **Killdeer** - *Charadrius vociferus*  
 04-06                    1    Judith Gap, Montana.  
 06-06                    c 5    Bowdoin NWR, Montana.  
 11-06                    2    Somers, Montana.  
 13-06                    c 5    between Hamilton and Bozeman, Montana.  
 16-06                    2    west of Cody, Wyoming.
045. **Upland Sandpiper** - *Bartramia longicauda*  
 03-06                    1    Judith Gap, Montana.
046. **Long-billed Curlew** - *Numenius americanus*  
 03-06                    c 5    Judith Gap, Montana.  
 04-06                    c 10    Judith Gap, Montana.  
 05-06                    4    along the US Highway 191 near Zortman, Montana.
047. **Marbled Godwit** - *Limosa fedoa*  
 03-06                    1    Judith Gap, Montana.  
 06-06                    c 10    Bowdoin NWR, Montana.  
 07-06                    4    (in total) along the US Highway 2 between Malta and Glacier NP, Montana.
048. **Wilson's Snipe** - *Gallinago delicata*  
 09-06                    1    McGee Meadow, Glacier NP.  
 13-06                    1    just west of Bozeman, Montana.
049. **Wilson's Phalarope** - *Phalaropus tricolor*  
 13-06                    c 10    in a pond along the highway 90 between Butte and Bozeman, Montana.
050. **Spotted Sandpiper** - *Actitis macularius*  
 04-06                    1    east of Judith Gap, Montana.  
 11-06                    1    National Bison Range, Montana.  
 12-06                    1    Hamilton, Montana.
051. **Willet** - *Tringa semipalmata*  
 06-06                    c 10    Bowdoin NWR, Montana.



**052. Franklin's Gull** - *Leucophaeus pipixcan*

06-06	c 30	Bowdoin NWR, Montana.
07-06	5	along the US Highway 2 between Malta and Glacier NP, Montana.
11-06	4	Ninepipe NWR, Montana.

**053. Ring-billed Gull** - *Larus delawarensis*

05-06	c 20	along the US Highway 2 between Buffalo Hot Springs and Malta, Montana.
06-06	c 50	Bowdoin NWR, Montana.
10-06	c 25	Woodland Park, Kalispell, Montana.
11-06	c 10	Ninepipe NWR, Montana.

**054. California Gull** - *Larus californicus*

05-06	c 20	along the US Highway 2 between Buffalo Hot Springs and Malta, Montana.
06-06	c 100	Bowdoin NWR, Montana.
07-06	c 30	(in total) along the US Highway 2 between Malta and Glacier NP, Montana.
11-06	c 30	Ninepipe NWR, Montana.
16-06	c 25	Yellowstone Lake, Wyoming.

**055. Common Tern** - *Sterna hirundo*

06-06	c 10	Bowdoin NWR, Montana.
11-06	2	Split Pond, Reeds Slough, Montana.

**056. Mourning Dove** - *Zenaidura macroura*

Common in Montana and Wyoming.

**057. Burrowing Owl** - *Athene cunicularia*

17-06	1	East of Cody, Wyoming.
-------	---	------------------------

**058. Long-eared Owl** - *Asio otus wilsonianus*

19-06	2	Molt, Montana.
-------	---	----------------

**059. Common Nighthawk** - *Chordeiles minor*

06-06	3	Bowdoin NWR, Montana.
17-06	c 10	East of Cody, Wyoming.
18-06	2	between Cody, Wyoming and Billings, Montana.
20-06	c 5	Arrow Creek, east of Billings, Montana.

**060. Common Poorwill** - *Phalaenoptilus nuttallii*

16-06	1	western part of Cody, Wyoming.
-------	---	--------------------------------

**061. Vaux's Swift** - *Chaetura vauxi*

10-06	2	Apgar, Glacier NP, Montana.
11-06	1-2	Kalispell, Montana.
12-06	1	Missoula, Montana.

**062. White-throated Swift** - *Aeronautes saxatilis*

14-06	2	Mammoth Hot Springs, Yellowstone NP, Wyoming.
15-06	2	Soda Butte, Yellowstone NP, Wyoming.

- |       |   |                                     |
|-------|---|-------------------------------------|
| 16-06 | 1 | near Exit, Yellowstone NP, Wyoming. |
|-------|---|-------------------------------------|
063. **Rufous Hummingbird** - *Selasphorus rufus*
- |       |     |                             |
|-------|-----|-----------------------------|
| 07-06 | 2   | Apgar, Glacier NP, Montana. |
| 08-06 | 2-3 | Apgar, Glacier NP, Montana. |
| 09-06 | 3-4 | Apgar, Glacier NP, Montana. |
| 10-06 | 1   | Apgar, Glacier NP, Montana. |
064. **Belted Kingfisher** - *Megasceryle alcyon*
- |       |   |  |
|-------|---|--|
| 13-06 | 1 | between Hamilton and Bozeman, Montana. |
| 16-06 | 1 | western part of Cody, Wyoming.         |
065. **Lewis's Woodpecker** - *Melanerpes lewis*
- |       |   |                                     |
|-------|---|-------------------------------------|
| 13-06 | 2 | between Butte and Bozeman, Montana. |
|-------|---|-------------------------------------|
066. **Red-naped Sapsucker** - *Sphyrapicus nuchalis*
- |       |   |                                       |
|-------|---|---------------------------------------|
| 09-06 | 1 | Apgar, Glacier NP, Montana.           |
| 10-06 | 1 | (calling) Apgar, Glacier NP, Montana. |
| 12-06 | 2 | Hamilton, Montana.                    |
| 14-06 | 1 | Lava Creek, Yellowstone NP, Wyoming.  |
067. **Downy Woodpecker** - *Dryobates pubescens*
- |       |   |                             |
|-------|---|-----------------------------|
| 09-06 | 1 | Apgar, Glacier NP, Montana. |
|-------|---|-----------------------------|
068. **Northern Flicker** - *Colaptes auratus*
- |       |     |                                      |
|-------|-----|--------------------------------------|
| 07-06 | 1   | Apgar, Glacier NP, Montana.          |
| 10-06 | 1   | Woodland Park, Montana.              |
| 11-06 | 2   | Kalispell, Montana.                  |
| 12-06 | 3-4 | Hamilton, Montana.                   |
| 14-06 | 3   | Lava Creek, Yellowstone NP, Wyoming. |
| 16-06 | 1   | Cody, Wyoming.                       |
| 18-06 | 1   | Red Lodge, Montana.                  |
069. **American Kestrel** - *Falco sparverius*  
Regularly observed in Montana and Wyoming, with up to 10 birds a day.
070. **Say's Phoebe** - *Sayornis saya*
- |       |   |   |
|-------|---|---|
| 20-06 | 1 | Arrow Creek, east of Billings, Montana. |
|-------|---|---|
071. **Western Wood Pewee** - *Contopus sordidulus*
- |       |   |  |
|-------|---|--|
| 10-06 | 1 | Apgar, Glacier NP, Montana.              |
| 11-06 | 1 | (singing) National Bison Range, Montana. |
072. **Willow Flycatcher** - *Empidonax traillii*
- |       |   |                             |
|-------|---|-----------------------------|
| 09-06 | 4 | Apgar, Glacier NP, Montana. |
| 12-06 | 1 | Hamilton, Montana.          |
- One of the birds at Apgar sang like *tsee-tsee-tsee*. The bird at Hamilton was tentatively identified by habitat.

**073. Least Flycatcher** - *Empidonax minimus*

07-06	1	near our motel at Malta, Montana.
09-06	1	Apgar, Glacier NP, Montana.
10-06	1	(in song) Apgar, Glacier NP, Montana.

**074. Hammond's Flycatcher** - *Empidonax hammondii*

07-06	1	Essex, Montana.
-------	---	-----------------

**075. Western Kingbird** - *Tyrannus verticalis*

05-06	1	along the US Highway 2 between Buffalo Hot Springs and Malta, Montana.
06-06	1	between Malta and Bowdoin NWR, Montana.
07-06	2	along the US Highway 2 between Malta and Glacier NP, Montana.
19-06	c 5	Molt, Montana.
20-06	2	Arrow Creek, east of Billings, Montana.

**076. Eastern Kingbird** - *Tyrannus tyrannus*

03-06	1	Judith Gap, Montana.
05-06	c 15	along the US Highway 2 between Buffalo Hot Springs and Malta, Montana.
06-06	c 20	Bowdoin NWR, Montana.
07-06	c 5	along the US Highway 2 between Malta and Glacier NP, Montana.
10-06	c 10	between Apgar, Glacier NP and Kalispell, Montana.
19-06	c 10	Molt, Montana.
20-06	c 10	Arrow Creek, east of Billings, Montana.

**077. Loggerhead Shrike** - *Lanius ludovicianus*

06-06	1	Bowdoin NWR, Montana.
-------	---	-----------------------

**078. Cassin's Vireo** - *Vireo cassinii*

12-06	1	(singing) Missoula, Montana.
-------	---	------------------------------

**079. Warbling Vireo** - *Vireo gilvus*

09-06	c 10	Apgar, Glacier NP, Montana.
10-06	c 5	Apgar, Glacier NP, Montana.
	1	Woodland Park, Kalispell, Montana.
16-06	c 5	Cody, Wyoming.
18-06	1	Red Lodge, Montana.

**080. Grey Jay** - *Perisoreus canadensis*

09-06	4	(2 ad, 2 juv) McGee Meadow, Glacier NP.
-------	---	---

**081. Black-billed Magpie** - *Pica hudsonia*

Regularly observed along roadsides in Montana and Wyoming, with up to 5 birds a day.

**082. Clark's Nutcracker** - *Nucifraga columbiana*

14-06	2	Mammoth Hot Springs, Yellowstone NP, Wyoming.
15-06	2	Canyon, Yellowstone NP, Wyoming.
16-06	2	Yellowstone Lake, Yellowstone NP, Wyoming.

**083. American Crow** - *Corvus brachyrhynchos*

Regularly observed in the plains of Montana and Wyoming, with up to 10 birds a day.

**084. Northern Raven** - *Corvus corax*

Regularly observed in the mountainous areas of Montana and Wyoming, with up to 10 birds a day.

**085. Cedar Waxwing** - *Bombycilla cedrorum*

04-06	2	Judith Gap, Montana.
07-06	4	Apgar, Glacier NP, Montana.
09-06	c 10	Apgar, Glacier NP, Montana; also on 10-06.

**086. Black-capped Chickadee** - *Poecile atricapillus*

09-06	2	Apgar, Glacier NP, Montana.
12-06	c 5	Hamilton, Montana.

**087. Horned Lark** - *Eremophila alpestris*

03-06	c 30	Judith Gap, Montana.
04-06	c 20	Judith Gap, Montana.
07-06	c 50	(in total) along Highway 2 between and Glacier NP, Montana.
15-06	1	Soda Butte, Yellowstone NP, Wyoming.
17-06	c 15	East of Cody, Wyoming.
18-06	c 10	Beartooth Pass, Wyoming.
19-06	c 10	Molt, Montana.

**088. Sand Martin** - *Riparia riparia*

06-06	1	Bowdoin NWR, Montana.
11-06	c 10	Split Pond, Reeds Slough, Montana.

**089. Tree Swallow** - *Tachycineta bicolor*

04-06	4	east of Judith Gap, Montana.
06-06	2	Visitor Center, Bowdoin NWR, Montana.
11-06	c 5	National Bison Range, Montana.

**090. Violet-green Swallow** - *Tachycineta thalassina*

07-06	c 10	Apgar, Glacier NP, Montana.
10-06	c 10	Apgar, Glacier NP, Montana.
11-06	c 10	Split Pond, Reeds Slough, Montana.

**091. Northern Rough-winged Swallow** - *Stelgidopteryx serripennis*

06-06	2	Malta, Montana.
11-06	c 5	Split Pond, Reeds Slough, Montana.

**092. Barn Swallow** - *Hirundo rustica*

The most common swallow, seen daily in Montana and Wyoming.

**093. American Cliff Swallow** - *Petrochelidon pyrrhonota*

The second most common swallow, seen daily in Montana and Wyoming.



**094. Golden-crowned Kinglet** - *Regulus satrapa*

07-06	c 10	Apgar, Glacier NP, Montana; same numbers on 8-06 and 9-06.
10-06	c 5	Apgar, Glacier NP, Montana.

**095. Ruby-crowned Kinglet** - *Regulus calendula*

09-06	1	Apgar, Glacier NP, Montana.
14-06	3	(all in song) Mammoth Hot Springs, Yellowstone NP, Wyoming.
15-06	c 10	Canyon, Yellowstone NP, Wyoming.
16-06	c 5	Canyon, Yellowstone NP, Wyoming.
18-06	c 10	during a stop in the Beartooth NP, Wyoming.

**096. House Wren** - *Troglodytes aedon*

11-06	1	National Bison Range, Montana.
-------	---	--------------------------------

**097. Red-breasted Nuthatch** - *Sitta canadensis*

07-06	2	Apgar, Glacier NP, Montana.
08-06	2	Apgar, Glacier NP, Montana.
09-06	3-4	Apgar, Glacier NP, Montana.
10-06	1	Apgar, Glacier NP, Montana.
15-06	1	(calling) Canyon, Yellowstone NP, Wyoming.

**098. Brown Creeper** - *Certhia americana*

07-06	1	Apgar, Glacier NP, Montana.
-------	---	-----------------------------

**099. Grey Catbird** - *Dumetella carolinensis*

12-06	2	between Missoula and Hamilton, Montana.
-------	---	---

**100. Sage Thrasher** - *Oreoscoptes montanus*

17-06	1	4 miles east of Cody, Wyoming.
-------	---	--------------------------------

**101. Brown Thrasher** - *Toxostoma rufum*

20-06	1	Arrow Creek, east of Billings, Montana.
-------	---	---

**102. Common Starling** - *Sturnus vulgaris*

Common in Montana and Wyoming.

**103. Varied Thrush** - *Ixoreus naevius*

08-06	4	(1 seen, 3 in song) Apgar, Glacier NP, Montana.
-------	---	---

**104. Mountain Bluebird** - *Sialia currucoides*

04-06	6	Judith Gap, Montana.
08-06	4	Logan Pass, Glacier NP, Montana.
11-06	1	National Bison Range, Montana.
15-06	2	(pair) Chittendon Road (north of Mount Washburn), Yellowstone NP, Wyoming.

**105. Townsend's Solitaire** - *Myadestes townsendi*

15-06	2	Chittendon Road (north of Mount Washburn), Yellowstone NP, Wyoming.
-------	---	---

106. **Swainson's Thrush** - *Catharus ustulatus*  
09-06                      c 5     Apgar, Glacier NP, Montana.
107. **American Robin** - *Turdus migratorius*  
Common in Montana and Wyoming.
108. **American Dipper** - *Cinclus mexicanus*  
14-06                      1     Lava Creek, Yellowstone NP, Wyoming.
109. **House Sparrow** - *Passer domesticus*  
Common in Montana and Wyoming.
110. **Buff-bellied Pipit** - *Anthus rubescens*  
08-06                      5-6     Logan Pass, Glacier NP, Montana.  
18-06                      c 10     Beartooth Pass, Wyoming.
111. **SPRAGUE'S PIPIT** - *Anthus spragueii*  
03-06                      1     (singing in the air like a Skylark) Judith Gap, Montana.
112. **Evening Grosbeak** - *Hesperiphona vespertina*  
09-06                      2     Apgar, Glacier NP, Montana.
113. **BLACK ROSY FINCH** - *Leucosticte atrata*  
18-06                      c 10     at the parking lot of the Beartooth Pass Vista Point, Wyoming.
114. **Cassin's Finch** - *Haemorhous cassinii*  
14-06                      1     (1<sup>st</sup> year), Mammoth Hot Springs, Yellowstone NP, Wyoming.  
16-06                      1     (male) Canyon, Wyoming.
115. **House Finch** - *Haemorhous mexicanus*  
04-06                      2     Judith Gap, Montana.  
05-06                      2-3     along the US Highway 191 near Zortman, Montana.  
06-06                      c 5     Bowdoin NWR, Montana.  
12-06                      2     Hamilton, Montana.  
20-06                      2     Billings, Montana.
116. **Red Crossbill** - *Loxia curvirostra*  
08-06                      1     (heard only) Apgar, Glacier NP, Montana.  
14-06                      4     Bozeman, Montana.  
                                 c 5     Roosevelt Lodge, Yellowstone NP, Wyoming.  
18-06                      2     Red Lodge, Montana.
117. **American Goldfinch** - *Spinus tristis*  
20-06                      2     Arrow Creek, east of Billings, Montana.
118. **Pine Siskin** - *Spinus pinus*  
Common to very common in Montana and Wyoming.

119. **THICK-BILLED LONGSPUR** - *Rhynchophanes mccownii*  
 03-06                    c 10    Judith Gap, Montana.  
 04-06                    2      Judith Gap, Montana.
120. **CHESTNUT-COLLARED LONGSPUR** - *Calcarius ornatus*  
 03-06                    c 10    Judith Gap, Montana.  
 04-06                    c 5      Judith Gap, Montana.
121. **Lark Bunting** - *Calamospiza melanocorys*  
 03-06                    1      (male) Judith Gap, Montana.  
 19-06                    c 5      Molt, Montana.  
 20-06                    c 10    Arrow Creek, east of Billings, Montana.
122. **Slate-coloured Fox Sparrow** - *Passerella schistacea*  
 08-06                    1      Logan Pass, Glacier NP, Montana.  
 Fox Sparrow is now split into four species.
123. **Song Sparrow** - *Melospiza melodia*  
 11-06                    2      National Bison Range, Montana.  
 12-06                    1      Hamilton, Montana.
124. **White-crowned Sparrow** - *Zonotrichia leucophrys*  
 07-06                    1      Apgar, Glacier NP, Montana.  
 18-06                    1      Beartooth Pass, Wyoming.
125. **Dark-eyed Junco** - *Junco hyemalis*  
 07-06                    1      (Oregon form) Apgar, Glacier NP, Montana.  
 09-06                    1      (Oregon form) Apgar, Glacier NP, Montana.  
 14-06                    1      (Oregon form) Lava Creek, Yellowstone NP, Wyoming.  
 15-06                    3-4    (Oregon form) Canyon, Yellowstone NP, Wyoming.
126. **Savannah Sparrow** - *Passerculus sandwichensis*  
 The most common sparrow in Montana (especially Bowdoin NWR) and Wyoming (Cody and surroundings).
127. **BAIRD'S SPARROW** - *Ammodramus bairdii*  
 06-06                    1-2    Bowdoin NWR, Montana.  
 My notebook said: *light supercilium, different facial expression, stripes on breast black, on flanks chestnut.*
128. **Grasshopper Sparrow** - *Ammodramus savannarum*  
 05-06                    4      during a short stop along the US Highway 191 near Zortman, Montana.  
 06-06                    1      Bowdoin NWR, Montana.
129. **Brewer's Sparrow** - *Spizella breweri*  
 17-06                    1      east of Cody, Wyoming.
130. **Vesper Sparrow** - *Poocetes gramineus*  
 03-06                    2-3    Judith Gap, Montana.  
 04-06                    c 10    Judith Gap, Montana.

- |       |      |  |
|-------|------|--|
| 19-06 | c 10 | Molt, west of Billings, Montana              |
| 20-06 | c 10 | Arrow Creek, northeast of Billings, Montana. |
131. **Lark Sparrow** - *Chondestes grammacus*  
 20-06                    c 5    Arrow Creek, east of Billings, Montana.
132. **Green-tailed Towhee** - *Pipilo chlorurus*  
 16-06                    1    1 mile west of Cody, Wyoming.
133. **Spotted Towhee** - *Pipilo maculatus*  
 20-06                    1    Arrow Creek, east of Billings, Montana.
134. **Yellow-headed Blackbird** - *Xanthocephalus xanthocephalus*  
 Common in Montana (especially Bowdoin NWR) and Wyoming.
135. **Bobolink** - *Dolichonyx oryzivorus*  
 03-06                    1    (male) north of Harlowton, Montana.
136. **Western Meadowlark** - *Sturnella neglecta*  
 Common in Montana and Wyoming.
137. **Bullock's Oriole** - *Icterus bullockii*  
 20-06                    1    (male) Arrow Creek, east of Billings, Montana.
138. **Red-winged Blackbird** - *Agelaius phoeniceus*  
 Common in Montana and Wyoming.
139. **Brown-headed Cowbird** - *Molothrus ater*  
 Common in Montana and Wyoming.
140. **Brewer's Blackbird** - *Euphagus cyanocephalus*  
 Common in Montana and Wyoming.
141. **Common Grackle** - *Quiscalus quiscula*  
 Common in Montana and Wyoming.
142. **Orange-crowned Warbler** - *Leiothlypis celata*  
 07-06                    c 5    Apgar, Glacier NP, Montana.  
 09-06                    c 10   Apgar, Glacier NP, Montana.  
 11-06                    2-3   Bison Natural Range, Montana.  
 14-06                    c 5    (all in song) Mammoth Hot Springs, Yellowstone NP, Wyoming.  
 15-06                    c 5    Canyon, Yellowstone NP, Wyoming.
143. **American Redstart** - *Setophaga ruticilla*  
 09-06                    c 5    (including a first-year bird) Apgar, Glacier NP, Montana.
144. **American Yellow Warbler** - *Setophaga aestiva*  
 04-06                    c 10   in total around Hamilton and Judith Gap, Montana.



05-06	2-3	along the US Highway 191 between Lewiston and Malta, Montana.
06-06	c 5	Bowdoin NWR, Montana.
07-06	1	Essex, Montana.
10-06	1	Woodland Park, Kalispell, Montana.
18-06	2	Joliet, Montana.

145. **Audubon's Warbler** - *Setophaga auduboni*

09-06	c 5	Apgar, Glacier NP, Montana.
14-06	c 5	(all in song) Mammoth Hot Springs, Yellowstone NP, Wyoming.
15-06	c 5	Canyon, Yellowstone NP, Wyoming.
16-06	1	Canyon, Yellowstone NP, Wyoming.

146. **Townsend's Warbler** - *Setophaga townsendi*

Between 8 and 10 June, 1 male was seen and heard daily behind our cabin in Apgar, Glacier NP, Montana.

147. **Lazuli Bunting** - *Passerina amoena*

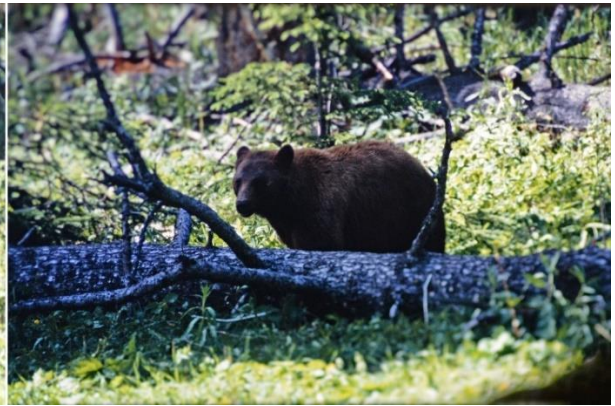
10-06	1	(male) Woodland Park, Kalispell, Montana.
-------	---	---

---

## Mammals



Left: Pronghorn, 6 June 2001, Bowdoin NWR, Montana; right Bisons, 11 June, Natural Bison Range, Montana; © Jan van der Laan.



Black Bears, the right one is a brown Black Bear, 15 June 2001, Yellowstone NP, Wyoming; © Jan van der Laan.



Squirrels, 15 June 2001, Yellowstone NP, Wyoming; © Jan van der Laan.





Left: Ground Hog, 8 June 2001, Logan Pass, Montana; left: Moose, 15 June 2001, Yellowstone NP, Wyoming; © Jan van der Laan.



Left: Bison; right: me, taken cover at a pole, 16 June 2001, Canyon, Yellowstone NP, Wyoming; © Marieke Wiringa.