

Report of a birding trip to

Texas

From 25 March to 10 April 1993

Including a short visit to New Mexico

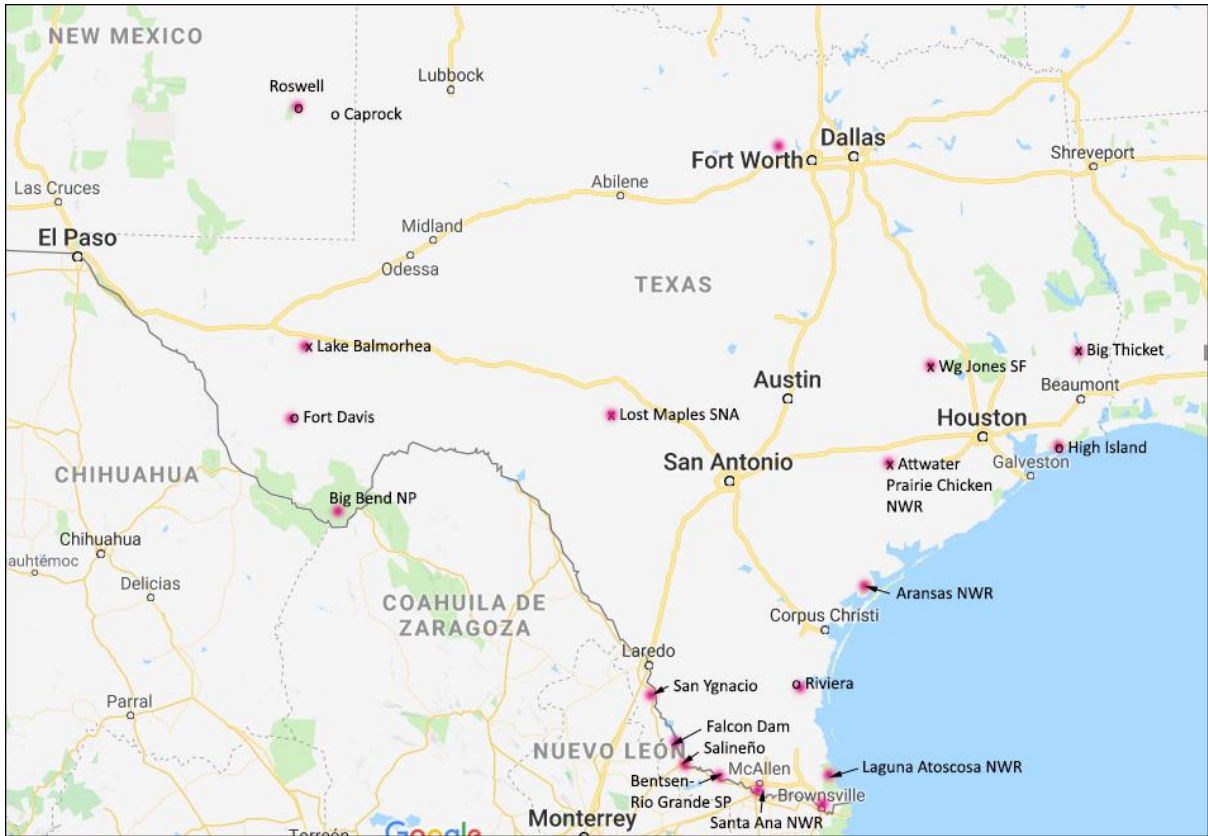
Participants:

Max Berlijn, Oscar Endtz & Jan van der Laan



Lesser Prairie Chicken, 7 April 1993, Caprock, New Mexico; © Oscar Endtz.

Maps



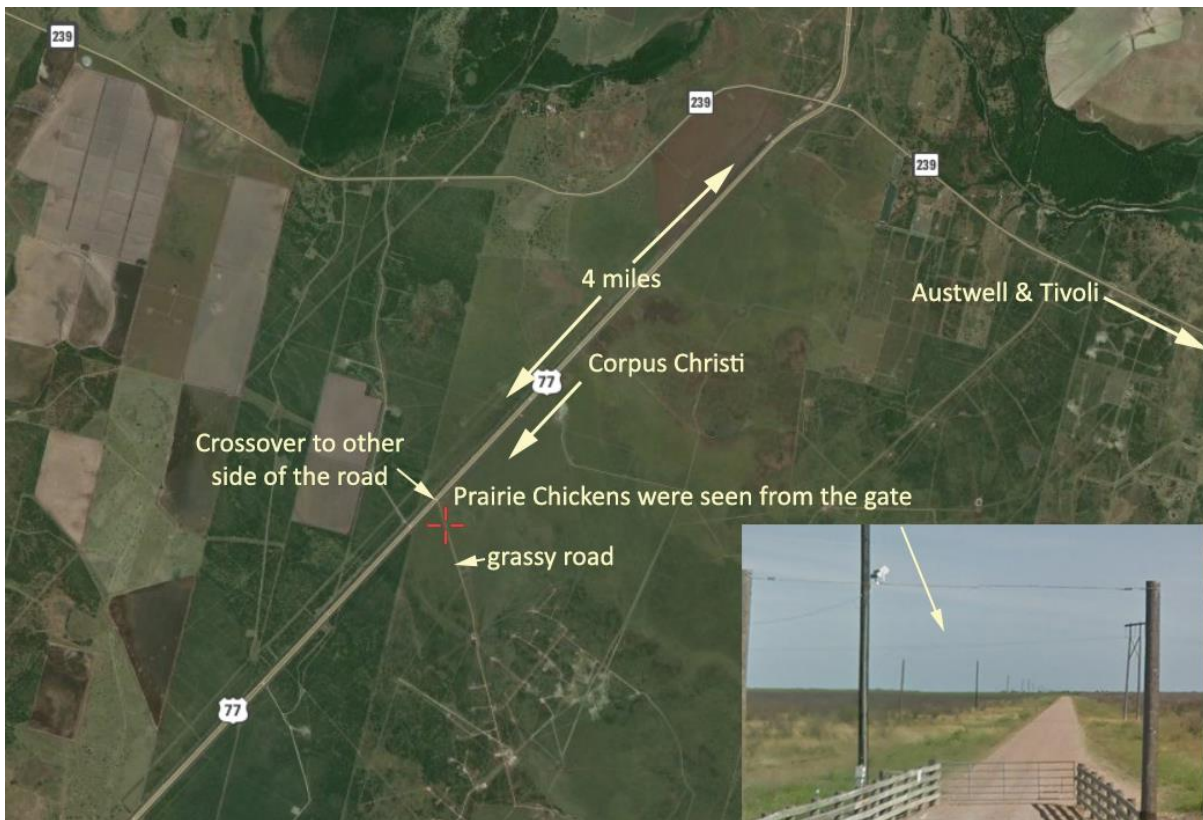
Map 1: places we visited.



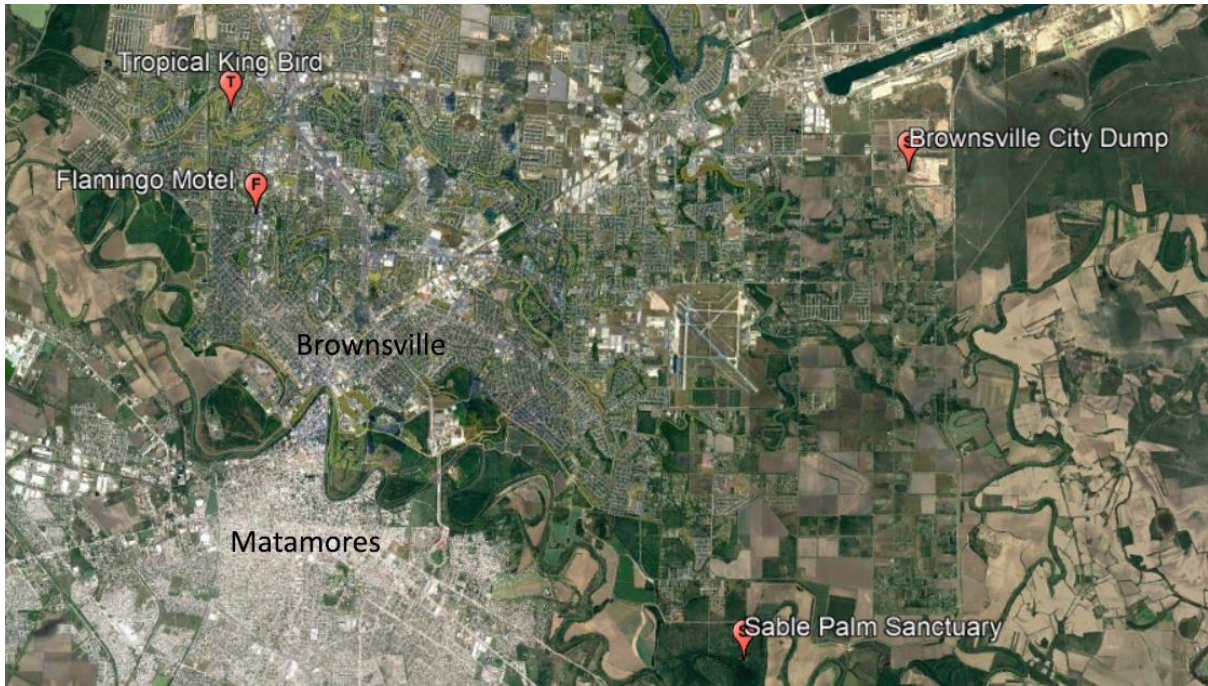
Map 2: WG Jones State Forest



Map 3a (left): Attwater Prairie Chicken NWR; Map 3b (right): Aransas NWR.



Map 4: location of the Greater Prairie Chicken along the 77. In 1993 the road behind the gate was a cart track in the grass.



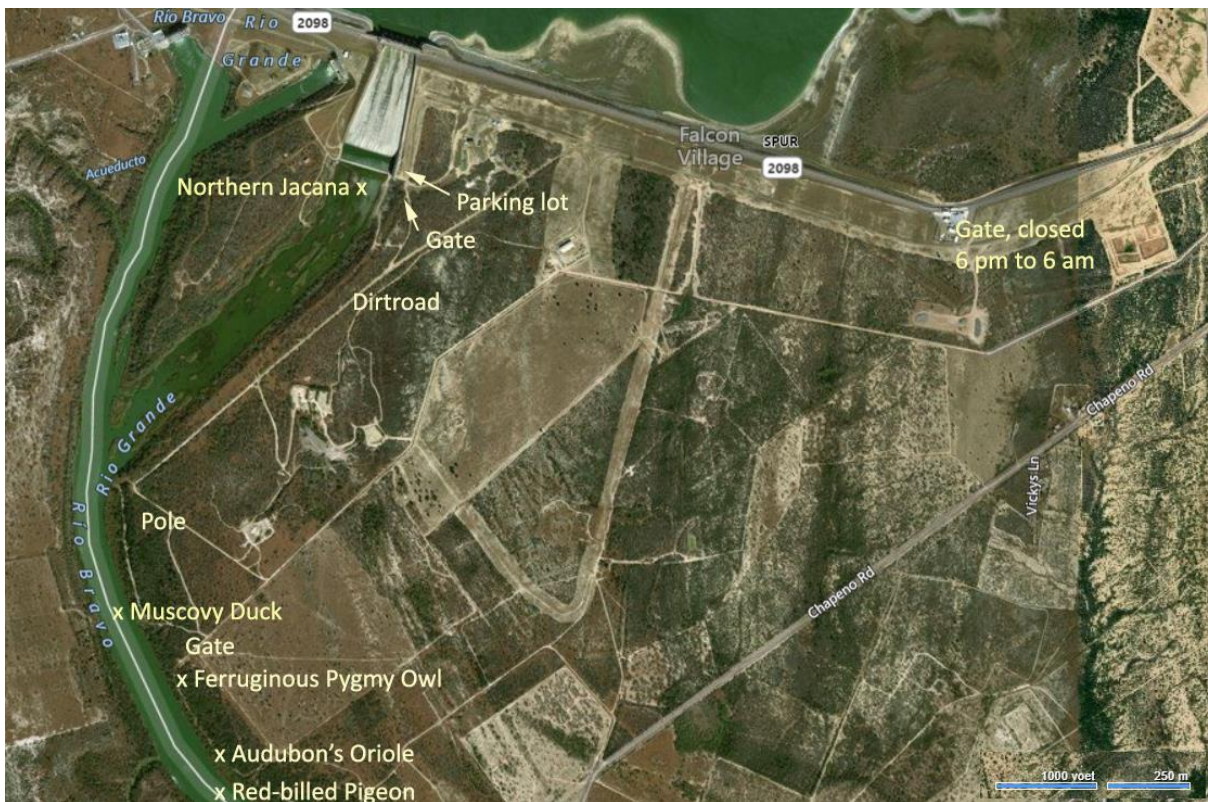
Map 5: Brownsville, with the four most important locations.



Map 6: Santa Ana National Wildlife Refuge. On Google the lakes are West Lake, North Lake and East Lake.



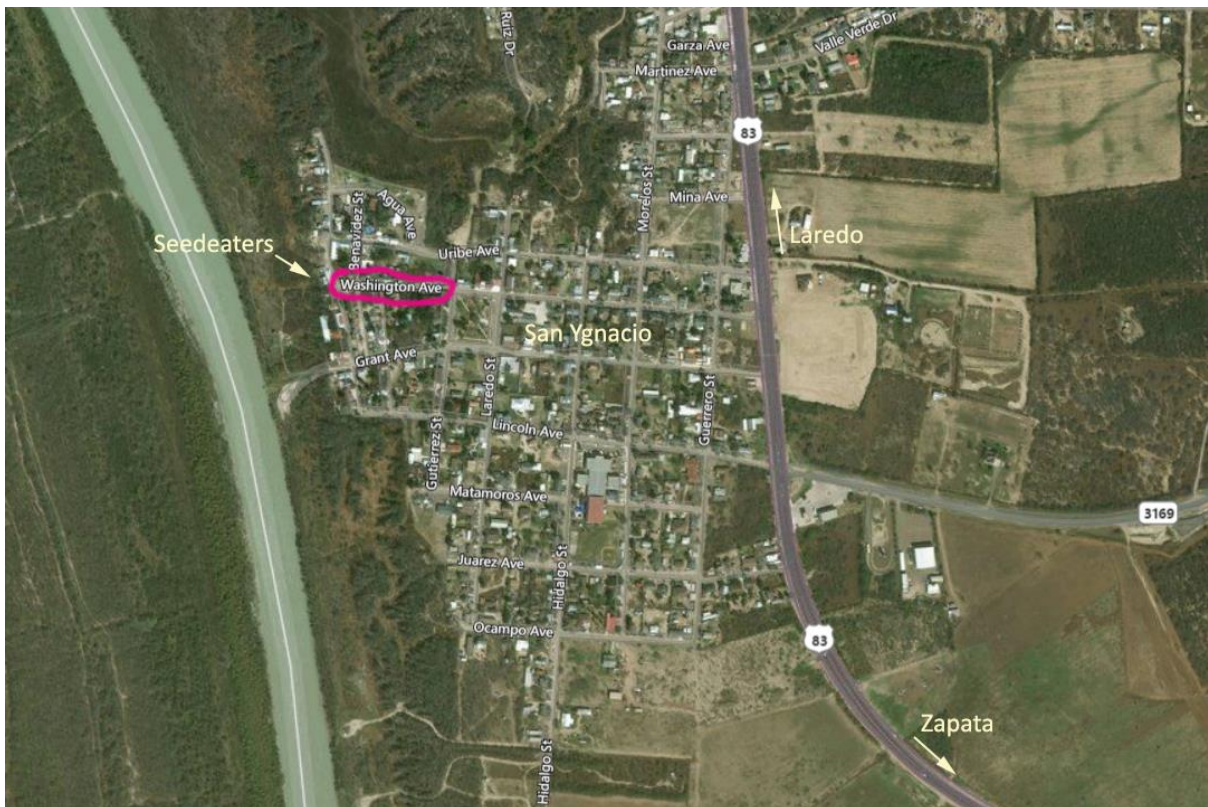
Map 7: Bentsen-Rio Grande Valley State Park.



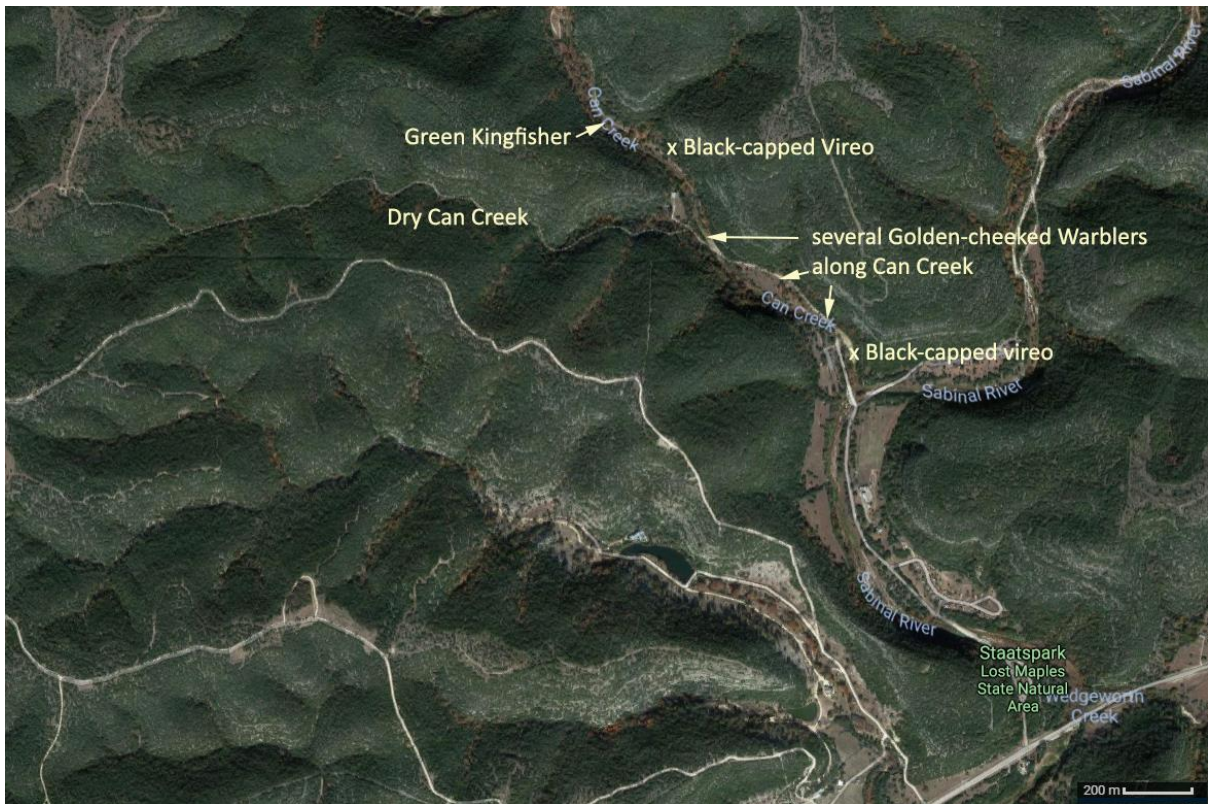
Map 8: Falcon Dam.



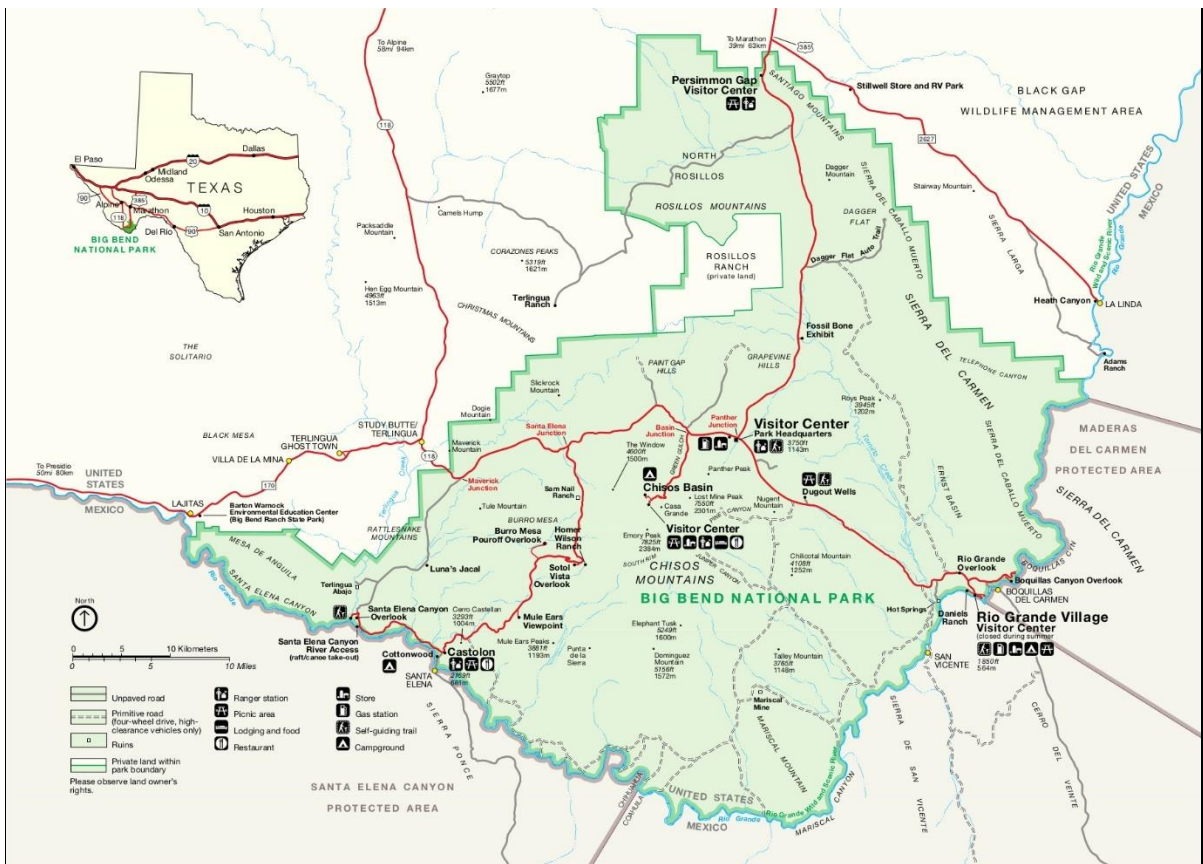
Map 9: Salineño, the former good spot for Brown Jay.



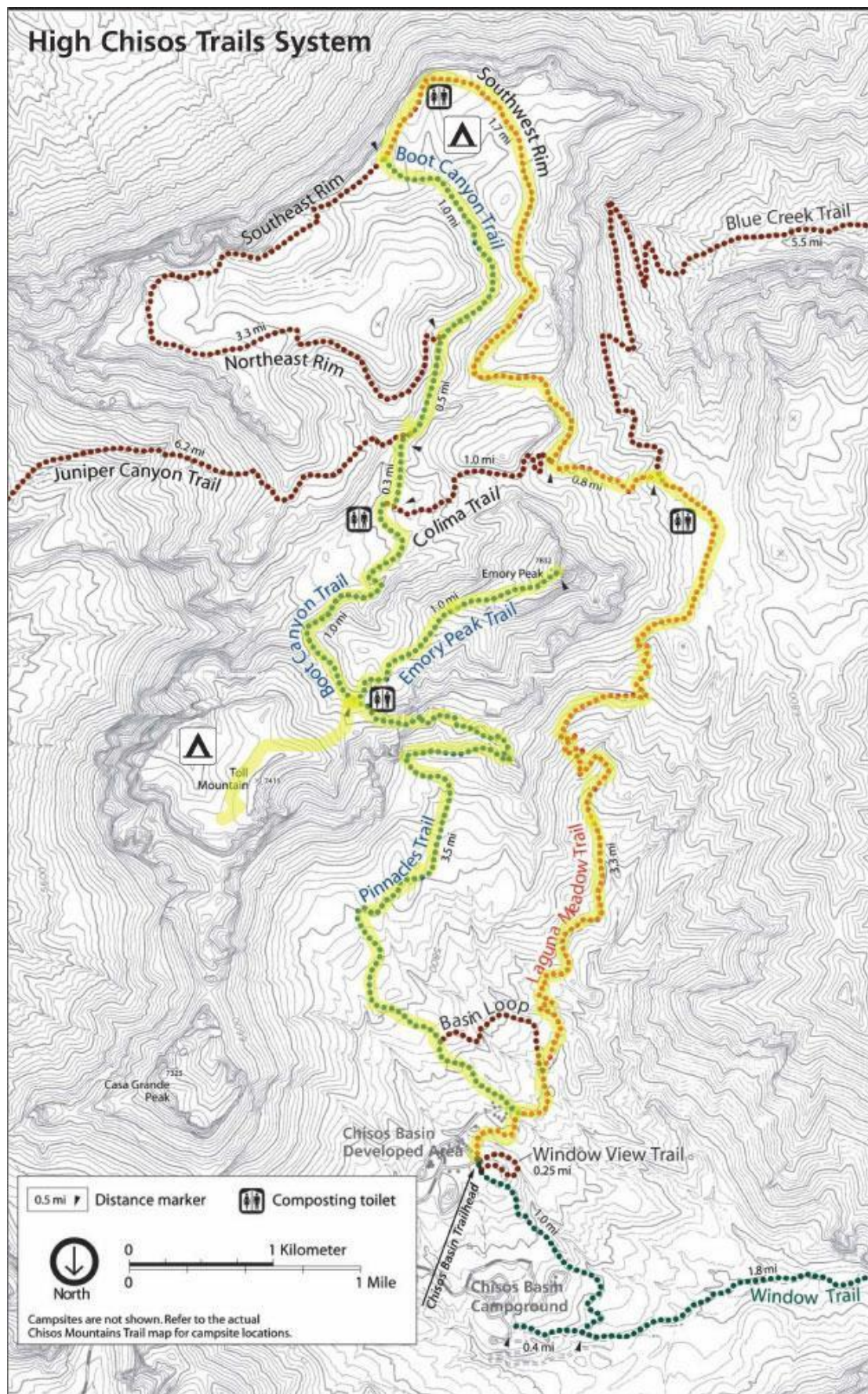
Map 10: San Ygnacio, in 1993 a good spot for Morellet's Seedeater (aka White-collared Seedeater), in 2018 it was still ok.



Map 11: Lost Maples State Natural Area.



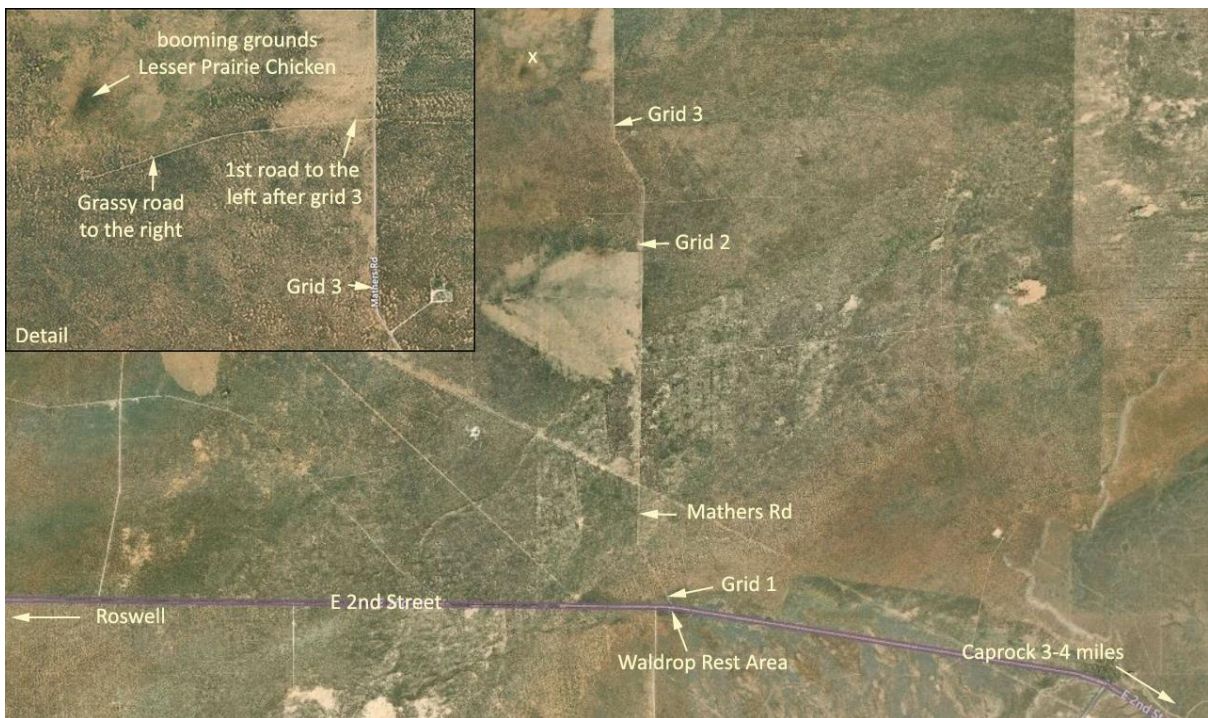
Map 12: Big Bend National Park.



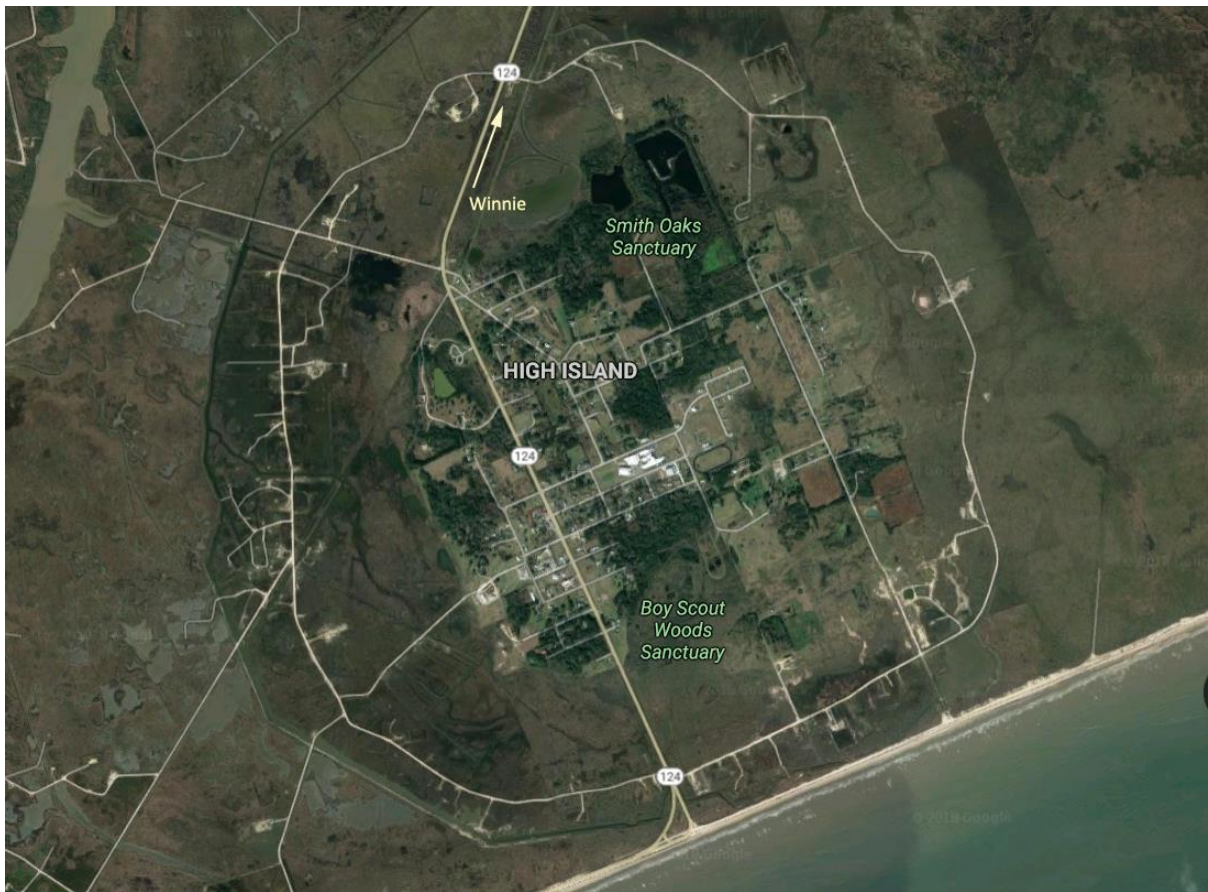
Map 13: trail map of the Chisos Mountains, Big Bend NP; © Big Bend National History Association.



Map 14: Davis Mountains, with detail of the State Park.



Map 15: Lesser Prairie Chicken location between Roswell and Caprock, New Mexico.



Map 16: High Island; Boy Scouts Wood Sanctuary was previously known as Audubon Woods.

Introduction

Somewhere in February 1993 Max Berlijn and Gerard Steinhaus asked me if I wanted to join a spring trip in 1993 in Texas, USA. Inspired by a trip report by Arnoud van den Berg from 1983 I didn't hesitate too long, so I booked a plane ticket. Then, Gerard's mother in law became very ill, so he did not want to leave his family. Max asked his best friend Oscar Endtz to join us and he was very positive about that. So it was Max Berlijn, Oscar Endtz and me, Jan van der Laan who would make the trip to Texas.

Itinerary

- 25-03** Departure was at 10:45 with KL661 from Schiphol, Amsterdam to **Houston, Texas**. The plane was full and because we (Max Berlijn, Oscar Endtz and Jan van der Laan) were tall, we got three business-class seats. After a 10-hours flight we finally landed at **Houston Intercontinental Airport**. We picked up our rental car at Dollar-Rent-a-Car (a Dodge Spirit). First species: American Crow, Great-tailed Grackle, Chimney Swift and Turkey Vulture. We drove to **WG Jones State Forest**, about 20 miles north of Houston, because this was a good place to start a birding holiday. The specialties in this forest are the Red-cockaded Woodpecker, Brown-headed Nuthatch and several woodpeckers. We visited this forest two times, the first time in the afternoon and a short visit in the late evening. The first visit yielded Red Cardinal, White-eyed Vireo, Cedar Waxwing, Brown-headed Nuthatch, Tufted Titmouse, Carolina Chickadee, Blue-gray Gnatcatcher, Brown Creeper and Pileated Woodpecker. The second visit yielded Hairy Woodpecker, Yellow-bellied Sapsucker, Orange-crowned Warbler, White-throated Sparrow and a calling Chuck-will's Widow. No sign yet of the Red-cockaded Woodpecker, although a ranger told us where to look for the birds. Finally we went to a **Motor Inn Motel** nearby, after a dinner at **Pizza Hut**.
- 26-03** Early in the morning we went to the WG Jones SF again and finally with success, since 6 Red-cockaded Woodpeckers were observed. Other interesting birds (for us Europeans) included Wood Duck, Red-bellied Woodpecker, Brown Creeper, Chipping Sparrow, Carolina Wren, House Wren and Black-and-white Warbler. Via **Hempstead** and **Magnolia** we went to **the Attwater's Prairie Chicken National Wildlife Refuge**. To our great disappointment the reserve was closed and nobody there knew an alternative. The farmlands nearby along **Farm Road 3013**, however, proved to be a great birding area with interesting species like Scissor-tailed Flycatcher, Upland, Pectoral and Least Sandpipers, Greater and Lesser Yellowlegs, Mottled Duck, Blue-winged Teal. Another interesting place in the reserve itself was Pintail Marsh with Sandhill Crane, Canada and Snow Goose, Cinnamon Teal, Pied-billed and Least Grebe, Savannah Sparrow, Killdeer, White-tailed Hawk, American Purple Gallinule, Fulvous and Black-bellied Whistling Duck, Crested Caracara. Dinner in a Chinese restaurant and overnight in a motel nearby in **Sealy**.
- 27-03** In the morning we scanned **Farm Road 3013** for waders and ducks. Then we went to **Farm Road 111** (east of **Lake Texana**) to look for a group of Mountain Plovers, which was present for at least a week before our arrival, but had departed now. Interesting birds we saw were American Golden Plovers, Upland Sandpipers, Western Sandpipers, Greater Yellowlegs, Cooper's Hawk, Red-shouldered Hawk and a flock of Brewer's Blackbirds. Also worth to mention were the dozens of Monarch Butterflies migrating to the north. Our next target was the **Aransas National Wildlife Refuge** for all sorts of wetland birds. At first we went to the **Visitor Center** to buy some books and to get information. The warden and his wife told us about a Prairie Chicken-spot west of **Aransas** and a Great Horned Owl near the Visitor Centre. After this we went to the observation tower where we observed four Whooping Cranes at a far-away distance, White-faced Ibis, Marbled Godwit, Olive-sided Flycatcher, Royal and Caspian Terns. Finally we went to **Highway 77** to look for the Greater Prairie Chickens but without any expectations. The place was only a grass-road towards a house in the distance and the surrounding grass was too tall to scan properly. Oscar attention was drawn by some birds on the road, but according to Max these were rabbits, due to their large ears! Finally it became clear these rabbits were booming Prairie Chickens! Eight birds were observed in good light at 200-300 meters. After this highlight on our way to **Fulton** we observed a crossing Bobcat and a White-tailed Hawk on a telegraph-pole. In **Fulton** we found a motel near the **Sand Dollar Pavilion**.
- 28-03** This day the boat-trip in the **Aransas NWR** with Captain Ted was planned. Before that we paid a short visit to nearby **Goose Island**, where we observed American Oystercatcher, our first Reddish Egrets, Black Skimmers, Common Loons (in summer plumage!) and Brown Pelicans. The boat-trip proved to be very successful, with a total of 18 closely observed Whooping Cranes. Other highlights were Seaside and Sharp-tailed Sparrows (Nelson's or Saltmarsh), Canvasback, Redheads, American Bittern and the large tern colonies. On the boat we met Bob Sundstrom, whom I have met in Alaska on the Kougarok Road near Nome! Bob was so kind to give us locations for Cave Swallows and

Masked Ducks. In the afternoon we went south to **Corpus Christi**. On our way along the highway we observed in a pond nine Stilt Sandpipers, several dowitchers and stints. At **Cape Valero** I had short encounter with a rattlesnake (of course the most lethal one, to impress your family and friends). At Cape Valero we also had Grasshopper Sparrows, Solitary Sandpipers and a large flock of Redheads. Corpus Christi did not produce the two Masked Ducks, but only Yellow-crowned Night Heron and a White-faced Whistling Duck. We were more successful at **Riviera** where we saw a female Masked Duck in a pond east of Riviera (*four* birds were supposed to be present). After this splendid observation we went **Kingsville**, where we observed two Cave Swallows under a bridge and next to the **Sarita Rest Area** along **Highway 77**. This rest-area is famous for the Tropical Parula, but we did not see any. Nevertheless, we had splendid observations of Green Jay, Hooded Oriole, Hooded Warbler, Northern Parula and Blue-winged Warbler. A long drive brought us to **Harlingen** (!), where we took a motel and had dinner (taco's and Corona's) in a Mexican restaurant.

29-03 Today we visited the **Laguna Atascosa National Wildlife Refuge**. This is a grassy area with lagoons, nice for water birds and some southern specialties. At the entrance we had our first Roadrunners, Plain Chachalaca and lots of Ladder-backed Woodpeckers and Red-naped sapsuckers. Furthermore we saw Cassin's Sparrow, Wilson's Plover, Harris's Hawk, Curve-billed Thrasher, Olive Sparrow and Vesper Sparrow. The next stop was the **Brownsville City Dump**, which we visited the afternoon for two hours. Yes, no holiday is complete without visiting a dump! This stinking dump was crowded with Chihuahuan Ravens, Great-tailed Grackles and Laughing Gulls. No sign of the Tamaulipas or Mexican Crows, but they leave the dump at the end of March and only a few individuals stay to breed. After this minor disappointment we went to the **Sable Palm Grove Sanctuary**, a small reserve in the southern part of **Brownsville**. This is the best spot for the Buff-bellied Hummingbird in the USA. We saw two birds at a feeder at the entrance. Furthermore we saw White-tipped Dove, Couch's Kingbird, Lincoln's Sparrow and Common Yellowthroat. We missed a Black-and-blue Warbler, which was present for several weeks at the entrance. Finally we went to the **Flamingo Motel** at the corner of **Central Boulevard** and **Boca Chica Boulevard** in the center of Brownsville. This seems to be the best spot for the Red-crowned Parrot, but the first of three approaching parrots appeared to be a Yellow-headed Parrot! However, two Red-crowned Parrots showed itself very well and this sighting was celebrated in the swimming pool of the motel. Finally a Lesser Nighthawk ended a day of good birding. Dinner at Pizza Hut.

30-03 In the morning we went to a place along **Central Boulevard**, called the **Benvenidez State Farm** or something. This was, according to the Rio Grande Bird Alert a good spot for the Tropical Kingbird. We found the bird at **Country Club Road** behind the tennis court. This bird was sitting on a telegraph line and disappeared in a tree, uttering its diagnostic alarm call. Next, we went to the **Santa Ana National Wildlife Refuge** west of Brownsville, an ideal spot for several Texas-specialties. Immediately we went to the **Visitor Center** for information and they told us the female Rose-throated Becard was gone, but the Northern Jacana was still present. Good numbers of Broad-tailed Hawk came by, but we forgot to pay attention to birds at the entrance. The early morning seems best for the Hook-billed Kites. Nevertheless, interesting birds we saw were an immature Northern Jacana, King and Sora Rails, Green Kingfisher, Buff-bellied Hummingbird, Altamira Oriole, Couch's Kingbird, Great Kiskadee, Clay-colored Sparrow, Green jays and a Least Bittern. In the late afternoon we headed for **the Bentsen-Rio Grande State Park** further upriver. On arrival we found our first Long billed Thrasher and a friendly birder from Austin, who showed us two Eastern Screech Owls and an Elf Owl-nest. At nightfall we heard several Common Paurques and a Common Poorwill. After this successful day we went to **McAllen**, where we spent the night after having dinner in a vague Chinese restaurant.

31-03 Early in the morning we returned to **Bentsen-Rio Grande SP** to look for the Tropical Parula inside the trailer-loop. We heard this bird already from the outside of the trailer-loop and had splendid observations of this bird singing from the tree tops. At this time it became clear how irritating the Plain Chachalacas in full chorus were, since we were concentrating on several singing birds, including an elusive but present Northern-beardless Tyrannulet. Next, we went to the **Rio Grande** in search for the Ringed Kingfisher and a vague claim of a Roadside Hawk. We only found several Ringed Kingfishers and an Anhinga. After that we went to **Salineño**. There we met an English couple, who told us the best spot of the Ferruginous Pygmy Owl at **Falcon Dam**. After half an hour with no birds we went to Falcon Dam. We found the spot, but no interesting birds. Max stayed at the dam, while Oscar and I went back to **Salineño** for the Muscovy Ducks, supposed to be present there in the evening. Birds there included Great Horned Owl, Buffleheads, Ringed Kingfisher and at dusk several Lesser Nighthawks. Apart from being afraid of being alone and in the dark, Max observed a flock of Cave Swallows and a probable Common Black Hawk and several Lesser Nighthawks too. Finally we went to **Zapata**, where we spent the night in a Best Western. This evening we randomly chose from the ABA-membership-list Tommy Joe Hines from Carlsbad, New Mexico in order to give us information about Lesser Prairie

Chickens in New Mexico. Tommy-Joe was very friendly and helpful in giving this information, so we went sleeping very happy with this precise information.

- 01-04** Early in the morning we went back to the **Falcon Dam**. The first interesting bird we saw were Bewick's Wren, 3 Audubon's Orioles, a Muscovy Duck flying south, Brown-crested Flycatcher, Nashville Warbler and 3 Red-billed Pigeons. At the Ferruginous Pygmy Owl-spot we met an American birder, who was here for the tenth time in a row without success, but after half an hour he discovered one bird in a tree! After some unsuccessful search for Brown Jays we went back to the Falcon Dam. Most interesting birds were a Northern Jacana, Ringed Kingfisher and Yellow-crowned Night Heron. Next stop was **Salineño** at the trailer-site for the Brown Jay, but these birds had a few days off. The only interesting bird was dead, an Eastern Screech Owl. After that, we drove to **San Ygnacio** to the only spot these days for the brilliant-colored Morelet's (White-collared) Seedeater. We found at least four birds at the end of **Washington Street**. Finally we drove to the **Edward's Plateau** for the two most interesting birds, Golden-cheeked Warbler and Black-capped Vireo. We found two Golden-cheeked Warblers late in the evening at the **Lost Maples State Natural Area**, also Green Kingfisher, Rufous-crowned Sparrow, Black-chinned Hummingbird and Scrub Jay. Motels are scarce in the area, so we drove to **Kerrville**. A motel was quickly found, as was a Pizza Hut.
- 02-04** In the early morning (after a good breakfast in a local cafe) we did some birding behind the motel. After that we went to **Dewberry Hollow**, south of **Kerrville**, which seemed to be a good spot for Black-capped Vireo, according to the several bird-finding guides. Apart from Red-flanked Towhees, Field Sparrow and House Finches, we could not find the Vireo. Therefore, we went back to the **Lost Maples SNA**. On arrival we almost immediately found two Black-capped Vireos and had very good looks of one male. Furthermore we saw several Golden-cheeked Warblers, including females. An Eastern Phoebe showed itself only to Max and Oscar and a Townsend's Solitaire was only seen well by Oscar and myself. After phoning home we continued our journey to the **Big Bend National Park**. After a long and boring drive we arrived at **Alpine**, where we reserved a motel for two nights.
- 03-04** In the early morning we drove to the **Big Bend National Park** along **Highway 118**, through grassy desert habitat. Interesting birds were a Northern Flicker, Cactus Wrens, Lark Buntings, Scaled Quails, Verdin, Black-throated Sparrows and lots of Chipping Sparrows. At the **Visitor Center** at **Panther Junction** we obtained good information for Lucy's Warblers and Gray Hawk. Lucifer Hummingbirds had not arrived yet and a few Colima Warblers were reported. We tried to pull our luck at **Rio Grande Village**. There we observed Black-chinned Hummingbirds, Black Phoebes, Vermilion Flycatchers, Hooded Oriole, a pair of Summer Tanagers, Ash-throated Flycatcher, Vesper Sparrows and several Canyon Wrens singing in Mexico but invisible. Next we went to the **Nature Trail**, a small trail in the south-east corner of the Rio Grande Village. There we heard a singing Canyon Wren up a slope, so this was the time to get the bird. Indeed, we had very good looks of one bird. On our way back it proved the birds we observed were actually Rock Wrens, showing how difficult birding in a foreign country is and reading a field guide is one thing and reading the labels (the red bird is the Canyon Wren, the grey bird the Rock Wren and not vice versa) another! Our final aim this day was the **Cottonwood Campground** in the south-western part of the park. In earlier years this was the place for both Lucy's Warbler and Thick-billed Kingbird (the latter arrived a week after our departure). Since it was very hot, not many birds were found. Only Max saw a Black-tailed Gnatcatcher, while I was the only one to observe a Green-tailed Towhee. Other interesting birds were Lesser Goldfinch, Wilson's warbler, Ash-throated Flycatcher, Northern Flicker and several Vermilion Flycatchers. Finally we went back to **Alpine** (all motels were overbooked), had dinner and phoned Pansy Espy in Fort Davis (see later).
- 04-04** An early morning drive brought us again to the **Cottonwood Campground** in the **Big Bend BP**. On arrival several Lucy's Warblers were heard singing, but it took us a long time to get good looks of one individual. Other interesting birds were Bufflehead, Western Wood-Pee-wee, two Black-tailed Gnatcatchers, Hooded Orioles, Western Kingbird, American Pipit, White-throated Swift, Northern Flicker and an elusive Yellow-breasted Chat. Next we went back to **Rio Grande Village** to the **Nature Trail**. There we saw Black-throated Green Warbler, Verdin and Roadrunner and finally, we observed a Canyon Wren on the Mexican side of the **Rio Grande**. A final effort at the western part of the village yielded a Grey Hawk in the cottonwood trees. Next we went again to the **Visitor Center** at **Panther Junction**, which was now closed, but two Scott's Orioles and a Curve-billed Thrasher were present. To complete the day, we went to **The Basin** in the **Chisos Mountains**, in the central part of the park. There we saw Phainopepla, Violet-green Swallow, Rock Wren, Rufous-crowned Sparrows, Canyon Towhees and Dark-eyed Juncos. No dinner was served, so we went to sleep angry and hungry.
- 05-04** We rose very early in order to get as far as possible along the **Laguna Meadow Trail**. Along this very beautiful trail we observed several Mexican Jays, Bushtits, Hutton's Vireo, Band-tailed Pigeon, White-throated Swifts, Hermit Thrushes,

a single Crissal Thrasher, Rufous-sided Towhees, Canyon Wren and two displaying Broad-tailed Hummingbirds with their cricket-like wing-whirring sound. No Colima Warblers were found, probably too few numbers were present and we didn't have enough time to get to the best place, the **Boot Spring**. On our way back we met four Swedish birders, who we were bound to meet on several other occasions the next days. We arrived at **The Basin** at noon. Our next stop was **Fort Davis, Davis Mountains**, where we made an appointment with Pansy Espy, an owner of land with Mountain Plovers on it. Unfortunately the plovers were not present or at least too elusive. Some Canadian birders gave us a place for Montezuma Quails and Common Black-Hawks. First we went to the Black-Hawks along **Limpia Creek**, where I was the only one to see the bird. Next we went back to the **Davis Mountains State Park** for the Montezuma Quails and saw a pair at a drinking-place. Finally we went to a small pond between **Fort Davis** and **Alpine** and had good numbers of Buffleheads, Black Phoebe and Cedar Waxwings. We had dinner at the **Indian Lodge** in the park, phoned the Arizona Bird Alert, but we were too tired to search for the ghost light in the Davis Mountains.

- 06-04** The first hours of the morning we drove the so-called **Scenic Loop** till the **Mount Locke McDonald Observatory**. Most interesting birds were Western Bluebirds, Scrub Jays, Acorn Woodpecker, Montezuma Quail (calling) and Scott's Oriole. The Common Black-Hawk showed itself very well at **Limpia Creek**, so we continued our journey to **Lake Balmorhea**, a large lake north of the **Davis Mountains**, but first a stop at a rest-area along **Highway 10** in **Pecos County**, where the second Tufted Flycatcher for the USA was seen since Saturday, but the only birds we saw were Brewer's Blackbirds, the bird was gone. At **Lake Balmorhea** we were very lucky: the two grebes present were actually two different species, Western and Clark's Grebe! Also present were Franklin's Gull, Ring-billed Gulls, Snowy Plovers, Black-necked Stilts, Long-billed Curlew, Long-billed Dowitcher, Western Sandpipers, "Mexican" Mallards and Greater Yellowlegs. At 14:30 hours we left the area and went to **Caprock, New Mexico**. After **Tatum** (where we were driving on the motorway to Roswell cf [Pixies: Trompe le Monde!](#)), the landscape changed into vast blue-grass prairies, the ideal habitat for the Lesser Prairie Chicken. The directions given by Tommy-Joe Hines proved to be very detailed and spot on. Since the last 300 meters were very sandy we decided to walk, but this disturbed some birds at the start of the road, forcing us to be very careful. We counted a total of eight birds, but they were not displaying, except for one bird very briefly. A Pronghorn watched us from miles away, showing how alert these animals were: we only saw it well with the telescope. Since the views were not very satisfying, we decided to stay in **Roswell**. We found a motel (again a Best Western) and... Pizza Hut!
- 07-04** An early rise in the dark started yet another day. While driving to **Caprock**, a helicopter watched us in the dark. At sunrise, we arrived at the booming grounds seeing the Lesser Prairie Chickens busy already. Fortunately, a Northern Harrier cleared the arena, so we positioned the car more properly. One by one the birds re-appeared, taking no notice of the car. Now the birds could be watched very closely at a distance of at most two meters! After this splendid sight we returned to **Tatum**, had breakfast and went back to Texas again. Along the road we observed our first definite Western Meadowlark, Brewer's Sparrow, and seven Burrowing Owls (amidst a Prairie dog-town of half a mile in length). A long and rather boring drive brought us to **Fort Worth**. A long search for a motel brought us finally to a Best Western, but now no places to eat could be found, so a Pizza express was called and we ate them in our motel room.
- 08-04** In the morning we paid a visit to the **Village Creek Wastewater Treatment Plant** in **Fort Worth**, a very interesting place for shorebirds: many Baird's Sandpipers, Least Sandpipers and a few Semipalmated Sandpipers. Moreover, a resting flocks of Franklin's Gull was seen very closely. Our only well-observed Yellow-headed Blackbird was seen here. After that a long ride south was on the program. Nothing interesting, except for the sign: Waco, 35 miles. In the late afternoon we arrived at **Hickory Creek**, a part of the **Big Thicket** and a place well known for the Bachman's Sparrow. Unfortunately, the place was not suitable enough, since the trees were too high to form good habitat for this sparrow. The only interesting birds we saw were Pine Warblers, a Pileated Woodpecker crossing the road at Silsbee and a Broad-winged Hawk sitting next to the road. Finally, we went to **Winnie** to a best Western, had dinner and went to sleep.
- 09-04** This was our final complete day in Texas and it proved to be the best. In the early morning we birded in the **Boy Scout Woods Sanctuary**, a small wood at **High Island**. This wood was full of warblers like Worm-eating, Kentucky and Hood Warblers, Orchard Oriole, Great-crested Flycatcher, Cerulean Warbler, Brown Thrasher, Yellow-breasted Chat, Purple Martins, Red-eyed Vireo, Tennessee Warbler, Blue-winged Warbler, Ovenbird, Northern and Louisiana Waterthrush, Wood Thrush, Summer Tanager, Indigo Bunting and Boat-tailed Grackles. At noon we went to the **Bolivar Flats**, where lots of shorebirds, pelicans and terns can be observed. The best birds to see are Piping Plovers and we had a few. A wounded American Avocet was picked up and given to two ladies, who promised to bring it to a bird hospital. In the afternoon we went to the **Anahuac National Wildlife Reserve**. This is a large swamp with several lakes. Interesting birds we saw were Sora Rails, American Purple Gallinule, Swamp Sparrow, Least Bittern and a crossing pair of Clapper



Rails with at least 8 black chicks (chicks, not rails). Another highlight were the Alligators, which proved to be very shy. In the evening we went back to the **Boy Scout Woods Sanctuary**, which didn't yielded many birds more except for American Redstart. Satisfied we went back to **Winnie**, had dinner and went to sleep.

10-04 In the morning we went to the **Boy Scout Woods Sanctuary** again, but this time not many birds were found. Therefore, we went to the **Smith Oaks Sanctuary**, a larger wood at **High Island**. Two Scarlet Tanagers and a few Red-eyed Vireos were the best birds. A short search for a Northern Oriole was unsuccessful and a tip for a Buff-breasted Sandpiper at the **Bolivar Peninsula** forced us to leave the woods. Only Upland Sandpipers were around and later we heard that in the Smith Oaks Sanctuary a few Swainson's Warblers were discovered by Swedish birders a few minutes after we had left. So we returned to **Houston Intercontinental Airport**, checked in and left. The plane was not crowded, so everyone had three seats and a comfortable trip home. We met the four Swedish birders again who saw the Swainson's Warbler. After a flight of more than 8 hours we arrived at **Schiphol, Amsterdam** next morning.

The Species Accounts

Order and nomenclature follows www.worldbirdnames.org, version 9.1. Local and/or typical Texas species are in capitals.

Suggested Reading

A Birder's Guide to the Rio Grande Valley of Texas by Harold Holt and James Lane (1992).

Birder's Guide to Texas by Edward A. Kutac (1993).

Field Guide to Birds of North America, National Geographic Society (1987).

We used several bird reports that were available at the Dutch Birding Travelers Report of Dirk de Moes, especially his own 1988-report was strongly recommended. The DBTRS ceased to exist somewhere at the end of the 1990-ties.

Acknowledgements

We like to thank the following persons: Pieter Bison, Dirk & Irene de Moes, Roy de Haas & Anja Nusse, Martin Olthoff, Kevin Zimmer, Bob Sundstrom, Tommy-Joe Hines, Arnoud van den Berg, Pansy Espy, Bessie Cornelius, the wardens at the Aransas NWR, Ted Appel and his daughter and all birders we met and who were very helpful.

For more information, please contact:

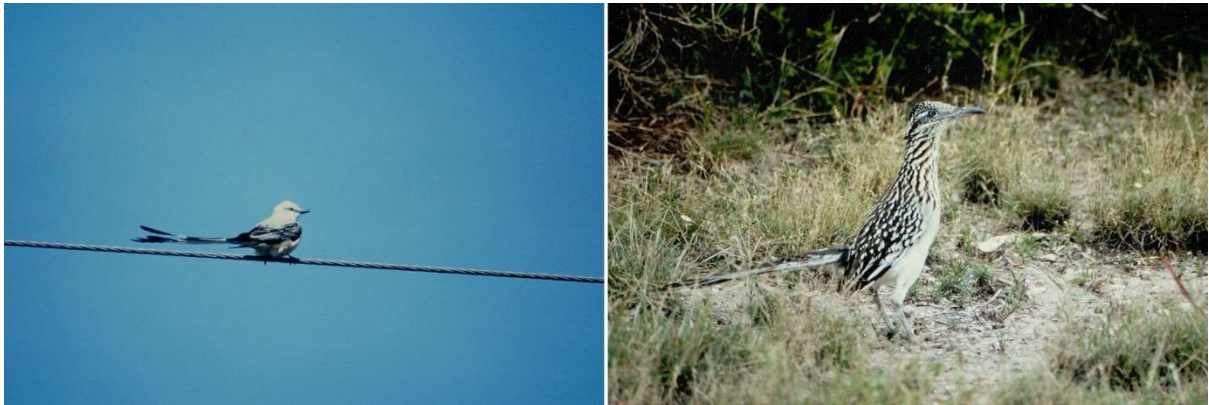
Jan van der Laan
Roemer Visscherstraat 5
1814 EL Alkmaar
The Netherlands
Telephone: (+3172) - 5203091
[Jan van der Laan](mailto:Jan.van.der.Laan@planet.nl)

Epilogue to the 2018 version

On 28 November 2017 Oscar passed away. Max and I would like to dedicate this report to him as a remembrance to one of the finest holidays we had together as friends and to the fun we had plus all the good birds we saw (in that order!).



Whooping Cranes, 28 March 1993, Aransas NWR; © Max Berlijn.



Left: Fork-tailed Flycatcher, 27 March 1993, along Farm Road 3013, San Antonio; **right:** Greater Roadrunner, 29 March 1993, Laguna Atascosa NWR; © Max Berlijn.



Golden-cheeked Warbler, 2 April 1993, Lost Maples State Natural Area; © Max Berlijn.



Left: Long-billed Curlew, 28 March 1993, Goose Island SRA; **right:** Least Bittern, 9 April 1993, Anahuac NWR; © Max Berlijn.



Left: Buff-bellied Pipit, 4 April 1993, Cottonwood Campground, Big Bend NP; **right:** Grey Hawk, 4 April 1993, Nature Trail, Rio Grande Village, Big Bend NP; © Max Berlijn.



Montezuma Quail, 5 April 1993, Davis Mountains State Park; © Max Berlijn.



Lesser Prairie Chicken, 7 April 1993, Caprock, New Mexico; © Max Berlijn.



Lesser Prairie Chicken, 7 April 1993, Caprock, New Mexico; © Oscar Endtz.

----. **White-faced Whistling-Duck** - *Dendrocygna viduata*

28-03 1 along Caribbean Drive, Corpus Christi.

The status of this particular bird never came known to us, so we consider it as an escape.

001. **Black-bellied Whistling-Duck** - *Dendrocygna autumnalis*

26-03 2 along Farm Road 3013, near the Attwater Prairie Chicken NWR.

27-03 c 10 between Eagle Lake and Garwood.

28-03 c 10 Aransas NWR.

5 along Caribbean Drive, Corpus Christi.

2 near Riviera.

29-03 c 50 Brownsville City Dump.

30-03 6 Central Boulevard, Brownsville.

c 20 Santa Ana NWR.

31-03 3 Falcon Dam.

8 Salineño.

002. **Fulvous Whistling-Duck** - *Dendrocygna bicolor*

26-03 6 Pintail Marsh, Attwater Prairie Chicken NWR.

28-03 4 along Caribbean Drive, Corpus Christi.

c 20 near Riviera.

30-03 c 4 Pintail Lake, Santa Ana NWR.

09-04 c 50 between High Island and Bolivar Flats.

003. **Cackling Goose** - *Branta hutchinsii*

26-03 6 Pintail Marsh, Attwater Prairie Chicken NWR

27-03 3 along Farm Road 3013, near the Attwater Prairie Chicken NWR.

004. **Snow Goose** - *Anser caerulescens*

26-03 19 (1 blue phase) Pintail Marsh, Attwater Prairie Chicken Reserve.

005. **Greater White-fronted Goose** - *Anser albifrons*

26-03 c 60 Pintail Marsh, Attwater Prairie Chicken NWR.

27-03 c 10 along Farm Road 3013, near the Attwater Prairie Chicken NWR.

006. **MUSCOVY DUCK** - *Cairina moschata*

01-04 1 flying south, Rio Grande, c 1,5 mile south of the Falcon Dam.

Due to a nesting-box program in Mexico these birds have increased considerably, resulting in growing numbers of birds observed in the Rio Grande since 1984. The best spot this year had to be at Salineño in the early morning and late evening with up to 13 birds, but apparently due to high water level the past few days, there were no suitable riverbanks at Salineño at the time of our presence.

007. **Wood Duck** - *Aix sponsa*

26-03 6 WG Jones SF.

02-04 1 Kerrville, Edward's Plateau.

008. **Cinnamon Teal** - *Spatula cyanoptera*

27-03 10 Pintail Marsh, Attwater Prairie Chicken Reserve.

28-03 2 Riviera at the junction of Farm Road 1080 South and 2310 East.

07-04 2 between Hobbs and Seminole.

009. **Blue-winged Teal** - *Spatula discors*

The most common and widespread duck, with up to 200 birds each day.

010. **Northern Shoveler** - *Spatula clypeata*
Common and widespread, with up to c 75 birds each day.
011. **Gadwall** - *Mareca strepera*
Common, seen almost daily in suitable habitat with numbers up to 100-200.
012. **American Wigeon** - *Mareca americana*
Common, seen almost daily in suitable habitat with up to 100 birds each day.
013. **Mallard** - *Anas platyrhynchos*
Although seen almost daily, less common than the Mottled Duck.
014. **Mottled Duck** - *Anas fulvigula*
Seen almost daily in suitable habitat, with up to 50 birds each day.
015. **Mexican Duck** - *Anas diazi*
Seen from the Falcon Dam through Big Bend and the Davis Mountains with up to 10 birds each day.
016. **Northern Pintail** - *Anas acuta*
- | | | |
|-------|------|---|
| 26-03 | c 20 | Pintail Marsh, Attwater Prairie Chicken NWR. |
| 28-03 | 4 | Aransas NWR. |
| 07-04 | 2 | between Hobbs and Seminole. |
| 08-04 | 2 | Village Creek Wastewater Treatment Plant, Fort Worth. |
017. **Green-winged Teal** - *Anas carolinensis*
- | | | |
|-------|-------|--|
| 26-03 | c 20 | along Farm Road 3013, near the Attwater Prairie Chicken NWR. |
| | 4 | Pintail Marsh, Attwater Prairie Chicken NWR. |
| 27-03 | c 10 | Aransas NWR. |
| 28-03 | c 10 | during the boat-trip, Aransas NWR |
| 07-04 | c 40 | between Hobbs and Seminole. |
| 08-04 | ca.15 | Village Creek Wastewater Treatment Plant, Fort Worth. |
| 09-04 | 5 | Anahuac NWR. |
018. **Canvasback** - *Aythya valisneria*
- | | | |
|-------|----|------------------------------------|
| 28-03 | 12 | during the boat-trip, Aransas NWR. |
| | 3 | Cape Valero, south of Rockport. |
019. **Redhead** - *Aythya americana*
- | | | |
|-------|------|------------------------------------|
| 28-03 | 1 | during the boat-trip, Aransas NWR. |
| | c 60 | Cape Valero, south of Rockport. |
| | 4 | near Riviera. |
| 07-04 | 1 | between Seminole and Lamesa. |
020. **Ring-necked Duck** - *Aythya collaris*
- | | | |
|-------|------|--|
| 26-03 | c 40 | Pintail Marsh, Attwater Prairie Chicken NWR. |
| 05-04 | 3 | (♀♀) in a pond a few miles south-east of Fort Davis. |
021. **Lesser Scaup** - *Aythya affinis*
- | | | |
|-------|------|---|
| 26-03 | c 10 | Pintail Marsh, Attwater Prairie Chicken NWR. |
| 05-04 | 1 | in a pond a few miles south-east of Fort Davis. |
| 07-04 | 1 | between Hobbs and Seminole. |

022. Bufflehead - *Bucephala clangula*

28-03	2	during the boat-trip, Aransas NWR.
	1	Fulton.
29-03	3	Laguna Atascosa NWR.
31-03	2	Salineño.
04-04	1	Cottonwood Campground, Big Bend NP.
05-04	15	(6 ♂♂) in a pond a few miles south-east of Fort Davis.
07-04	10	between Hobbs and Lamesa.

023. Red-breasted Merganser - *Mergus serrator*

27-03	1	from the observation tower, Aransas NWR.
28-03	c 20	during the boat-trip, Aransas NWR.

024. MASKED DUCK - *Oxyura dominica*

28-03	1	(female-type) Riviera at the junction of Farm Road 1080 South and 2310 East.
-------	---	--

025. Ruddy Duck - *Oxyura jamaicensis*

26-03	5	Pintail Marsh, Attwater Prairie Chicken NWR.
27-03	c 1000	Aransas NWR.
28-03	c 5000	during the boat-trip, Aransas NWR.
	1	Flour Bluff, Corpus Christi.
	1	near Riviera.
05-04	2	in a pond a few miles south-east of Fort Davis.
06-04	6	Lake Balmorhea.
07-04	c 150	between Hobbs and Seminole.
08-04	5	Village Creek Wastewater Treatment Plant, Fort Worth.

026. PLAIN CHACHALACA - *Ortalis vetula*

29-03	c 10	Laguna Atascosa NWR.
	1	Sable Palm Grove Sanctuary.
30-03	c 30	Santa Ana NWR.
	c 10	Bentsen-Rio Grande Valley SP.
31-03	c 25	Bentsen-Rio Grande Valley SP.
	5	Falcon Dam.
01-04	3	Falcon Dam, on Mexican territory.

027. SCALED QUAIL - *Callipepla squamata*

03-04	8	c 20 miles south of Alpine.
04-04	1	c 20 miles south of Alpine.

028. Northern Bobwhite - *Colinus virginianus*

26-03	1	along Farm Road 3013, near the Attwater Prairie Chicken NWR.
29-03	7	Laguna Atascosa NWR.

029. MONTEZUMA QUAIL - *Cyrtonyx montezumae*

05-04	2	(♂, ♀) Davis Mountains State Park.
06-04	2	(calling) Madera Canyon Picnic Ground, Davis Mountains.

030. Wild Turkey - *Meleagris gallopavo*

01-04	5	near Divine, Edward's Plateau.
	1	near Medina, Edward's Plateau.
02-04	3	between Kerrville and Medina, Edward's Plateau.

031. **LESSER PRAIRIE CHICKEN** - *Tympanuchus pallidicinctus*
 06-04 8 north-west of Caprock, New Mexico.
 07-04 c 20 (with at least 14 ♂♂) on booming-grounds north-west of Caprock, New Mexico.
032. **ATTWATER'S (GREATER) PRAIRIE CHICKEN** - *Tympanuchus cupido attwateri*
 27-03 8 (♂♂) on booming-grounds along Highway 77, 3.5 - 4 miles south of the junction with Farm Road 239 to Tivoli and Austwell.
 A number of 456 birds was estimated in 1992 for the whole of Texas. In 2016, the population declined to 42 birds following heavy spring floods, which wiped out an entire generation of eggs. Hurricane Harvey in 2017 was even more disastrous, likely killing at least 32 birds, with only 5 females found during the post-hurricane survey of the area. However, in spring of 2018, the estimated wild population was 12 (source: [Wikipedia](https://en.wikipedia.org/wiki/Attwater's_Prairie_Chicken)).
033. **Common Loon** - *Gavia immer*
 28-03 12 near Goose Island SRA and at Aransas NWR during the boat-trip.
034. **LEAST GREBE** - *Tachybaptus dominicus*
 26-03 4 Pintail Marsh, Attwater Prairie Chicken NWR.
 30-03 c 25 Pintail Lake, Santa Ana NWR.
035. **Pied-billed Grebe** - *Podilymbus podiceps*
 26-03 c 25 Pintail Marsh, Attwater Prairie Chicken NWR.
 27-03 1 along Highway 59 near El Campo.
 28-03 3 Flour Bluff, Corpus Christi.
 6 near Riviera at the junction of Farm Road 1080 South and 2310 East.
 29-03 c 20 Osprey Overlook, Laguna Atascosa NWR.
 30-03 c 15 Pintail Lake, Santa Ana NWR.
 31-03 c 20 Falcon Dam, same numbers on 01-04.
 03-04 3 Rio Grande Village, Big Bend NP.
 06-04 1 Limpia Creek, Davis Mountains.
 1 Lake Balmorhea.
 07-04 1 between Seminole and Lamesa.
 09-04 3 Anahuac NWR.
036. **Black-necked Grebe** - *Podiceps nigricollis*
 26-03 1 Pintail Marsh, Attwater Prairie Chicken NWR.
 28-03 1 Aransas NWR, during the boat-trip.
 1 near Riviera at the junction of Farm Road 1080 South and 2310 East.
 06-04 c 40 Lake Balmorhea.
 07-04 10 between Hobbs and Seminole.
 5 between Seminole and Lamesa.
037. **Western Grebe** - *Aechmophorus occidentalis*
 06-04 1 Lake Balmorhea; displaying with Clark's Grebe.
038. **Clark's Grebe** - *Aechmophorus clarkii*
 06-04 1 Lake Balmorhea; displaying with Western Grebe.
039. **American White Ibis** - *Eudocimus albus*
 27-03 2 from the observation tower, Aransas NWR.
 28-03 c 25 Aransas NWR.
 29-03 10 Laguna Atascosa NWR.
 30-03 3 Santa Ana NWR.

- | | | |
|-------|------|---|
| 09-04 | 24 | Bolivar Flats. |
| | c 20 | Boy Scout Woods Sanctuary, High Island. |
| | 1 | Anahuac NWR. |
| 10-04 | c 25 | between Winnie and High Island. |
| | c 75 | between Winnie and Houston. |
040. **White-faced Ibis** - *Plegadis chihi*
- | | | |
|-------|-------|--|
| 27-03 | 28 | from the observation tower, Aransas NWR. |
| 28-03 | c 30 | Aransas NWR. |
| | 2 | Corpus Christi. |
| 30-03 | 12 | Pintail Lake, Santa Ana NWR. |
| 01-04 | 1 | Falcon Dam. |
| 09-04 | c 30 | Anahuac NWR. |
| 10-04 | c 200 | Winnie. |
| | c 20 | between Winnie and High Island. |
| | c 100 | between Winnie and Houston. |
041. **Roseate Spoonbill** - *Platalea ajaja*
- | | | |
|-------|---|------------------------------------|
| 27-03 | 2 | Aransas NWR. |
| 28-03 | 1 | Goose Island SRA. |
| | 7 | during the boat-trip, Aransas NWR. |
| 09-04 | 7 | Anahuac NWR. |
| | 1 | Bolivar Flats. |
042. **American Bittern** - *Botaurus lentiginosus*
- | | | |
|-------|---|--|
| 27-03 | 1 | from the observation tower, Aransas NWR. |
| 28-03 | 1 | during the boat-trip, Aransas NWR. |
043. **Least Bittern** - *Ixobrychus exilis*
- | | | |
|-------|---|------------------------------|
| 30-03 | 1 | Pintail Lake, Santa Ana NWR. |
| 09-04 | 2 | Anahuac NWR. |
044. **Black-crowned Night Heron** - *Nycticorax nycticorax*
- | | | |
|-------|------|---------------------------------|
| 28-03 | 3 | Flour Bluff, Corpus Christi. |
| 31-03 | c 30 | Falcon Dam. |
| 01-04 | 3 | Falcon Dam. |
| 09-04 | c 15 | Anahuac NWR. |
| 10-04 | 1 | between Winnie and High Island. |
045. **Yellow-crowned Night Heron** - *Nyctanassa violacea*
- | | | |
|-------|---|------------------------------|
| 28-03 | 1 | Flour Bluff, Corpus Christi. |
| 01-04 | 1 | Falcon Dam. |
| 09-04 | 3 | Anahuac NWR. |
046. **Green Heron** - *Butorides virescens*
- | | | |
|-------|---|---|
| 30-03 | 2 | Central Boulevard, Brownsville. |
| | 2 | Santa Ana NWR. |
| 08-04 | 1 | Fort Worth. |
| 09-04 | 1 | Boy Scout Woods Sanctuary, High Island. |
| | 1 | between Winnie and High Island. |
| | 1 | Anahuac NWR. |
| 10-04 | 1 | between Winnie and High Island. |

047. Western Cattle Egret - Bubulcus ibis

Seen almost daily, with numbers from 1 or 2 birds up to 200 birds, typically following cattle.

048. Great Blue Heron - Ardea herodias

Fairly common with up to 20 birds observed in suitable habitat.

049. Great Egret - Ardea alba

Common to very common, with up to 100 birds observed in suitable habitat.

050. Reddish Egret - Egretta rufescens

28-03	1	Goose Island SRA
	3	during boat-trip, Aransas NWR.
	1	south of Fulton.
29-03	1	Laguna Atascosa NWR.

051. Tricolored Heron - Egretta tricolor

27-03	8	Aransas NWR.
28-03	c 20	during the boat-trip, Aransas NWR.
	5	Cape Valero, south of Rockport.
29-03	c 20	Laguna Atascosa NWR.
30-03	c 10	Santa Ana NWR.
09-04	1	Anahuac NWR.

052. Little Blue Heron - Egretta caerulea

26-03	1	WG Jones SF.
	c 40	Attwater Prairie Chicken NWR.
27-03	c 10	Aransas NWR.
28-03	5	Aransas NWR, during boat-trip and c 25 near Riviera.
29-03	c 10	Laguna Atascosa NWR.
07-04	7	between Hobbs and Seminole.
08-04	c 10	Fort Worth.
09-04	c 25	Anahuac NWR and near High Island.
10-04	c 5	between Winnie and High Island.

053. Snowy Egret - Egretta thula

Common, with up to 25 birds seen almost daily when in suitable habitat.

054. American White Pelican - Pelecanus erythrorhynchus

27-03	1	near Palacios.
	18	from the observation tower of the Aransas NWR.
28-03	c 100	during the boat-trip, Aransas NWR.
	c 10	Corpus Christi.
29-03	c 10	Laguna Atascosa NWR.
31-03	c 10	Falcon Dam.
01-04	c 10	Falcon Dam.
09-04	c 40	Bolivar Flats.

055. Brown Pelican - Pelecanus occidentalis

28-03	c 20	during the boat-trip, Aransas NWR.
09-04	c 20	Bolivar Flats.

056. NEOTROPIC CORMORANT - *Phalacrocorax brasilianus*

28-03	3	during the boat-trip, Aransas NWR.
	1	Fulton.
	2	Corpus Christi.
29-03	3	Santa Ana NWR.
09-04	3	Bolivar Flats.

Formerly known as Olivaceous Cormorant *P. olivaceus*.

057. Double-crested Cormorant - *Phalacrocorax auritus*

Common, seen almost daily in suitable habitat with up to 100 birds.

058. Anhinga - *Anhinga anhinga*

31-03	1	Bentsen-Rio Grande Valley SP.
	3	Rio Grande, 2 miles south of Falcon Dam.

059. Turkey Vulture - *Cathartes aura*

Common, seen daily with up to 100 birds each day, being the most common raptor.

060. Black Vulture - *Coragyps atratus*

Seen almost daily, especially in southern and western Texas, with up to 20 birds each day.

061. Western Osprey - *Pandion haliaetus*

28-03	1	Cape Valero, south of Rockport.
29-03	c 10	Laguna Atascosa NWR.
31-03	1	Salineño.
01-04	1	Falcon Dam.
10-04	1	between Winnie and Houston.

062. White-tailed Kite - *Elanus leucurus*

28-03	1	1 mile south of Riviera, along Highway 77.
29-03	1	Laguna Atascosa NWR.
30-03	4	(2 with nest) Santa Ana NWR.
31-03	1	Bentsen-Rio Grande Valley SP.
	1	Falcon Dam.
10-04	1	Bolivar Peninsula, near Rollover Pass.

063. Cooper's Hawk - *Accipiter cooperii*

27-03	1	along Farm Road 111, 8 miles east of Lake Texana.
28-03	1	Cape Valero, south of Rockport.
29-03	1	Laguna Atascosa NWR.
01-04	1	Salineño.
05-04	1	Limpia Creek, 3 miles north-west of Fort Davis.
06-04	1	(another?) Limpia Creek, 3 miles north-east of Fort Davis.
07-04	1	at the rest-area of Abilene, along Highway 20.

064. Sharp-shinned Hawk - *Accipiter striatus*

26-03	1	between WG Jones SF and Hempstead.
30-03	1	Santa Ana NWR.
31-03	1	Bentsen-Rio Grande Valley SP.
01-04	1	Falcon Dam.
02-04	1	along Highway 10 on our way to Alpine.
03-04	1	along Highway 118 between Big Bend NP and Alpine.

- | | | |
|-------|---|---|
| 04-04 | 1 | Cottonwood Campground, Big Bend NP. |
| 08-04 | 1 | Village Creek Wastewater Treatment Plant, Fort Worth. |
| | 1 | on our way between Fort Worth and Big Thicket. |
| 09-04 | 1 | Bolivar Flats. |
065. **Northern Harrier** - *Circus hudsonius*
- | | | |
|-------|------|--|
| 26-03 | c 10 | along Farm Road 3013 and in the Attwater Prairie Chicken Reserve. |
| 27-03 | 6 | 'en route' between Sealy and the Aransas NWR |
| 28-03 | c 10 | Aransas NWR. |
| 07-04 | 2 | north-west of Caprock, New Mexico. 1 bird brutally cleared the whole 'booming'-ground of the Prairie Chickens without success! |
| 09-04 | 3 | Anahuac NWR. |
| 10-04 | 1 | Bolivar Peninsula. |
066. **COMMON BLACK-HAWK** - *Buteogallus anthracinus*
- | | | |
|-------|---|---|
| 05-04 | 1 | Limpia Creek, 3 miles north-west of Fort Davis. |
| 06-04 | 1 | (at nest) Limpia Creek, 3 miles north-east of Fort Davis. |
067. **Harris's Hawk** - *Parabuteo unicinctus*
- | | | |
|-------|---|---|
| 29-03 | 7 | Laguna Atascosa NWR. |
| 01-04 | 4 | between Zapata and Falcon Dam. |
| 02-04 | 2 | a few miles before Alpine. |
| 06-04 | 1 | a few miles south of Hobbs, New Mexico. |
068. **WHITE-TAILED HAWK** - *Geranoaetus albicaudatus*
- | | | |
|-------|---|---|
| 26-03 | 1 | Pintail Marsh, Attwater Prairie Chicken NWR. |
| 27-03 | 1 | along Highway 35 north of Aransas NWR. |
| | 1 | along Highway 35, c 20 miles south of Austwell. |
| 28-03 | 1 | Cape Valero, south of Rockport. |
069. **GREY HAWK** - *Buteo plagiatus*
- | | | |
|-------|---|----------------------------------|
| 04-04 | 1 | Rio Grande Village, Big Bend NP. |
|-------|---|----------------------------------|
070. **Red-shouldered Hawk** - *Buteo lineatus*
- | | | |
|-------|---|--|
| 26-03 | 1 | between WG Jones SF and Hempstead. |
| 27-03 | 1 | along Farm Road no 111, 8 miles east of Lake Texana. |
| 08-04 | 1 | Big Thicket. |
071. **Broad-winged Hawk** - *Buteo platypterus*
- | | | |
|-------|------|---|
| 26-03 | 1 | between WG Jones SF and Hempstead. |
| 30-03 | c 50 | Santa Ana NWR. |
| 31-03 | 3 | Bentsen-Rio Grande Valley SP. |
| 08-04 | 4 | Big Thicket. |
| 09-04 | 3 | Bolivar Flats. |
| | 2 | Boy Scout Woods Sanctuary, High Island. |
| 10-04 | 1 | Boy Scout Woods Sanctuary, High Island. |
072. **Swainson's Hawk** - *Buteo swainsoni*
- | | | |
|-------|------|--|
| 26-03 | 1 | along Farm Road 3013, near the Attwater Prairie Chicken NWR. |
| 30-03 | 1 | Santa Ana NWR. |
| 31-03 | c 15 | Bentsen-Rio Grande Valley SP. |
| 01-04 | 2 | Falcon Dam. |

- | | | |
|-------|---|--|
| 02-04 | 1 | a few miles before Alpine. |
| 06-04 | 1 | between Caprock and Roswell, New Mexico. |
| 07-04 | 1 | Caprock, New Mexico. |
| | 5 | between Hobbs and Seminole. |
| | 1 | a few miles before Fort Worth. |
| 08-04 | 2 | south of Fort Worth and 1 south of Beaumont. |
073. **Red-tailed Hawk** - *Buteo jamaicensis*
- | | | |
|-------|------|---|
| 26-03 | 6 | between WG Jones SF and the Attwater Prairie Chicken NWR. |
| 27-03 | c 10 | 'en route' between Lake Texana and the Aransas NWR. |
| 28-03 | 2 | Aransas NWR. |
| 01-04 | 3 | between Falcon Dam and San Ygnacio. |
| 02-04 | 3 | between Lost Maples SRA and Alpine. |
| 03-04 | 2 | between Alpine and Rio Grande Village, Big Bend NP. |
| 04-04 | 3 | Big Bend NP. |
| 05-04 | 3 | between Big Bend NP and Alpine. |
| 06-04 | 4 | between the Davis Mountains and Roswell, New Mexico. |
| 07-04 | 1 | rest-area of Abilene. |
| 08-04 | 5 | between Fort Worth and Big Thicket. |
| 09-04 | 2 | Boy Scout Woods Sanctuary, High Island. |
| | 1 | Anahuac NWR. |
074. **Clapper Rail** - *Rallus crepitans*
- | | | |
|-------|---|--|
| 28-03 | 1 | (heard) during the boat-trip, Aransas NWR. |
| 09-04 | 9 | (3 adults, 6 chicks) Anahuac NWR. |
075. **KING RAIL** - *Rallus elegans*
- | | | |
|-------|---|--|
| 26-03 | 2 | (heard) along Farm Road 3013, near the Attwater Prairie Chicken NWR. |
| 30-03 | 3 | (1 seen, 2 heard) Santa Ana NWR. |
076. **Sora** - *Porzana carolina*
- | | | |
|-------|---|------------------------------|
| 30-03 | 8 | Pintail Lake, Santa Ana NWR. |
| 09-04 | 2 | Anahuac NWR. |
077. **Purple Gallinule** - *Porphyryla martinica*
- | | | |
|-------|---|--|
| 26-03 | 2 | Pintail Marsh, Attwater Prairie Chicken NWR. |
| 09-04 | 6 | Anahuac NWR. |
078. **Common Gallinule** - *Gallinula galeata*
Fairly common in suitable habitat (water!), with up to 25 birds observed.
079. **American Coot** - *Fulica americana*
Common to very common in suitable habitat (also in water!), with up to 500 birds.
080. **Sandhill Crane** - *Antigone canadensis*
- | | | |
|-------|---|--|
| 26-03 | 6 | Pintail Marsh, Attwater Prairie Chicken NWR. |
|-------|---|--|
081. **WHOOPING CRANE** - *Grus americana*
- | | | |
|-------|----|---|
| 27-03 | 4 | from the observation tower, Aransas NWR. |
| 28-03 | 18 | during the boat-trip, Aransas NWR. 136 birds were present here this winter. |

082. American Oystercatcher - *Haematopus palliatus*

28-03 c 5 Goose Island SRA.
 c 15 during the boat-trip, Aransas NWR.

083. Black-necked Stilt - *Himantopus mexicanus*

26-03 2 along Farm Road 3013, near the Attwater Prairie Chicken NWR.
 28-03 c 10 during the boat-trip, Aransas NWR.
 c 5 near Riviera.
 29-03 c 30 Laguna Atascosa NWR.
 30-03 5 Santa Ana NWR.
 01-04 2 Falcon Dam.
 06-04 9 Lake Balmorhea.
 07-04 c 5 between Hobbs and Seminole.
 08-04 c 5 Village Creek Wastewater Treatment Plant, Fort Worth.
 09-04 c 25 spread over Bolivar Peninsula and Anahuac NWR.

084. American Avocet - *Recurvirostra americana*

27-03 c 20 from the observation tower, Aransas NWR.
 28-03 1 during the boat-trip, Aransas NWR.
 06-04 45 Lake Balmorhea.
 07-04 9 between Hobbs and Seminole.
 09-04 c 1000 Bolivar Flats .

085. American Golden Plover - *Pluvialis dominica*

26-03 c 100 along Farm Road 3013, near the Attwater Prairie Chicken NWR.
 27-03 c 500 along Farm Road 111, 8 miles west of Lake Texana.
 28-03 c 10 Riviera.
 08-04 4 Village Creek Wastewater Treatment Plant, Fort Worth.
 09-04 c 20 Bolivar Flats.
 c 10 along Farm Road 1985, near the entrance of Anahuac NWR.

086. Grey Plover - *Pluvialis squatarola*

27-03 1 from the observation tower, Aransas NWR.
 28-03 1 Goose Island SRA.
 c 10 during the boat-trip, Aransas NWR.
 29-03 5 Laguna Atascosa NWR.
 09-04 2 Bolivar Flats.

087. Semipalmated Plover - *Charadrius semipalmatus*

29-03 2 Laguna Atascosa NWR.
 08-04 4 Village Creek Wastewater Treatment Plant, Fort Worth.
 09-04 c 10 Bolivar Flats.

088. Wilson's Plover - *Charadrius wilsonia*

29-03 6 Laguna Atascosa NWR
 09-04 6 Bolivar Flats.

089. Killdeer - *Charadrius vociferus*

Seen almost daily, with up to 20 birds, typically along roadsides and near water.

090. Piping Plover - *Charadrius melodus*

09-04 c 100 Bolivar Flats.

091. Snowy Plover - *Charadrius nivosus*

06-04 5 Lake Balmorhea.
09-04 3 Bolivar Flats.

092. Northern Jacana - *Jacana spinosa*

30-03 1 (imm.) Pintail Lake, Santa Ana NWR.
31-03 2 (imm.) Falcon Dam, beneath the spillway.
01-04 1 (imm.) Falcon Dam, beneath the spillway.

093. Upland Sandpiper - *Bartramia longicauda*

26-03 c 40 along Farm Road 3013, near the Attwater Prairie Chicken NWR.
 c 10 Attwater Prairie Chicken NWR.
27-03 c 20 along Farm Road 111, 8 miles east of Lake Texana.
 3 between Aransas NWR and Fulton.
28-03 c 25 San Bernardo Creek, along Highway 77 north of Kingsville.
08-04 2 Village Creek Wastewater Treatment Plant, Fort Worth.
10-04 5 Sandpiper Point, Bolivar Peninsula.

094. Whimbrel - *Numenius phaeopus*

28-03 1 during the boat-trip, Aransas NWR.
09-04 2 Bolivar Flats.

095. Long-billed Curlew - *Numenius americanus*

27-03 1 on the parking lot of the MacDonald's of Port Lavaca.
28-03 c 10 Goose Island SRA and during the boat-trip, Aransas NWR.
29-03 c 10 Laguna Atascosa NWR.
 c 10 between Port Isabel and Brownsville.
06-04 1 Lake Balmorhea.
09-04 5 Bolivar Flats.

096. Marbled Godwit - *Limosa fedoa*

27-03 c 25 from the observation tower, Aransas NWR.
28-03 1 during the boat-trip, Aransas NWR.
09-04 c 30 Bolivar Flats.

097. Ruddy Turnstone - *Arenaria interpres*

28-03 3 Goose Island SRA.
 c 20 during the boat-trip, Aransas NWR.
09-04 3 Bolivar Flats.

098. Red Knot - *Calidris canutus*

09-04 c 50 Bolivar Flats.

099. Stilt Sandpiper - *Calidris himantopus*

28-03 9 in a pond along Farm Road 881 a few miles south of Rockport.
08-04 1 Village Creek Wastewater Treatment Plant, Fort Worth.

100. Sanderling - *Calidris alba*

28-03 c 20 during the boat-trip, Aransas NWR.
09-04 c 40 Bolivar Flats.

101. Dunlin - *Calidris alpina*

26-03	c 10	along Farm Road 3013, near the Attwater Prairie Chicken NWR.
27-03	3	along Farm Road 111, 8 miles east of Lake Texana.
29-03	3	Laguna Atascosa NWR.
09-04	c 10	Bolivar Flats.
	c 10	along Farm Road 1985, near the entrance of Anahuac NWR.

102. Baird's Sandpiper - *Calidris bairdii*

08-04	c 50	Village Creek Wastewater Treatment Plant, Fort Worth.
-------	------	---

103. Least Sandpiper - *Calidris minutilla*

26-03	c 30	along Farm Road 3013, near the Attwater Prairie Chicken NWR.
27-03	c 30	along Farm Road 3013, near the Attwater Prairie Chicken NWR.
28-03	3	a few miles south of Rockport.
	3	between Rockport and Corpus Christi.
29-03	c 20	Laguna Atascosa NWR.
30-03	c 40	Pintail Lake, Santa Ana NWR.
31-03	c 50	Falcon Dam, same group on 01-04.
08-04	c 75	Village Creek Wastewater Treatment Plant, Fort Worth.
09-04	c 50	along Farm Road 1985, near the entrance of Anahuac NWR.

104. Pectoral Sandpiper - *Calidris melanotos*

26-03	c 50	(2 groups) along Farm Road 3013, near the Attwater Prairie Chicken NWR.
27-03	c 50	along Farm Road 3013, near the Attwater Prairie Chicken NWR.
	c 10	along Farm Road 111, 8 miles east of Lake Texana.
28-03	5	Corpus Christi.
08-04	c 20	Village Creek Wastewater Treatment Plant, Fort Worth.
10-04	3	Sandpiper Point, Bolivar Peninsula.

105. Semipalmated Sandpiper - *Calidris pusilla*

29-03	3	Laguna Atascosa NWR.
08-04	4	Village Creek Wastewater Treatment Plant, Fort Worth.

106. Western Sandpiper - *Calidris mauri*

27-03	2	along Farm Road 111, 8 miles east of Lake Texana.
29-03	c 100	Laguna Atascosa NWR.
01-04	1	Falcon Dam.
06-04	33	Lake Balmorhea.
09-04	c 1000	Bolivar Flats.
	c 50	along Farm Road 1985, near the entrance of Anahuac NWR.

107. Long-billed Dowitcher - *Limnodromus scolopaceus*

26-03	c 200	along Farm Road 3013, near the Attwater Prairie Chicken NWR.
27-03	c 100	along Farm Road 3013, near the Attwater Prairie Chicken NWR.
	c 100	along Farm Road 111, 8 miles east of Lake Texana.
28-03	c 300	in a pond along Farm Road 881 a few miles south of Rockport.
29-03	c 100	Laguna Atascosa NWR (these group could be Short-billed as well).
08-04	4	Village Creek Wastewater Treatment Plant, Fort Worth.

108. Short-billed Dowitcher - *Limnodromus griseus*

09-04	c 200	Bolivar Flats.
-------	-------	----------------

These were the only ones we dared to identify. We believed most dowitchers we observed were Long-billed,

because of tail-pattern, bill-length and call. Also the habitat, salt water habitat vs fresh water habitat could be very well in advance for Short-billed.

109. **Wilson's Snipe** - *Gallinago wilsonii*

26-03	c 50	along Farm Road 3013, near the Attwater Prairie Chicken NWR.
28-03	1	Cape Valero, south of Rockport.
03-04	1	Rio Grande Village, Big Bend NP.
08-04	1	Village Creek Wastewater Treatment Plant, Fort Worth.
09-04	2	along Farm Road 1985, near the entrance of Anahuac NWR.

110. **Spotted Sandpiper** - *Actitis macularia*

28-03	2	during the boat-trip, Aransas NWR.
	1	Cape Valero, south of Rockport.
31-03	2	Falcon Dam.
	5	Salineño.
01-04	1	Falcon Dam.
09-04	2	along Farm Road 1985, near the entrance of Anahuac NWR.

111. **Solitary Sandpiper** - *Tringa solitaria*

26-03	2	between WG Jones SF and Hempstead
28-03	1	Cape Valero, south of Rockport
30-03	2	Willow Lake, Santa Ana NWR
08-04	2	Village Creek Wastewater Treatment Plant, Fort Worth
09-04	1	between Sea Rim and High Island

112. **Lesser Yellowlegs** - *Tringa flavipes*

26-03	2	along Farm Road 3013, near the Attwater Prairie Chicken NWR.
27-03	c 25	along Farm Road 3013, near the Attwater Prairie Chicken NWR.
28-03	c 100	in total, at the Aransas NWR, Rockport, Corpus Christi and near Riviera.
29-03	c 10	Laguna Atascosa NWR.
08-04	5	Village Creek Wastewater Treatment Plant, Fort Worth.
09-04	c 10	along Farm Road 1985, near the entrance of Anahuac NWR.
10-04	2	Sandpiper Point, Bolivar Peninsula.

113. **Willet** - *Tringa semipalmatus*

27-03	2	near Port Lavaca.
	c 10	from the observation tower, Aransas NWR.
28-03	c 100	Aransas NWR.
29-03	c 25	Laguna Atascosa NWR.
09-04	c 100	Bolivar Flats.
	c 10	Anahuac NWR.

114. **Greater Yellowlegs** - *Tringa melanoleuca*

26-03	c 40	along Farm Road 3013, near the Attwater Prairie Chicken NWR.
27-03	6	along Farm Road 111, 8 miles west of Lake Texana.
28-03	5	during the boat-trip, Aransas NWR.
29-03	c 10	Laguna Atascosa NWR.
06-04	3	Lake Balmorhea.
08-04	c 10	Village Creek Wastewater Treatment Plant, Fort Worth.
09-04	c 30	along Farm Road 1985, near the entrance of Anahuac NWR.
	1	Bolivar Flats.

115. **Black Skimmer** - *Rynchops niger*
 28-03 c 30 Goose Island SRA.
 c 100 during the boat-trip, Aransas NWR.
116. **Bonaparte's Gull** - *Chroicocephalus philadelphia*
 08-04 c 40 Village Creek Wastewater Treatment Plant, Fort Worth.
117. **Laughing Gull** - *Leucophaeus atricilla*
 Only seen on the Gulf Coast, the Brownsville City Dump and Santa Ana NWR in numbers of up to 500 birds.
118. **Franklin's Gull** - *Leucophaeus pipixcan*
 06-04 1 Lake Balmorhea.
 07-04 23 between Hobbs and Seminole.
 08-04 c 75 Village Creek Wastewater Treatment Plant, Fort Worth.
119. **Ring-billed Gull** - *Larus delawarensis*
 27-03 3 from the observation tower, Aransas NWR.
 28-03 c 10 during the boat-trip, Aransas NWR.
 29-03 c 10 Brownsville City Dump.
 06-04 c 150 Lake Balmorhea.
 08-04 4 Lake Livingston, along Highway 190.
 09-04 1 Port Bolivar.
120. **American Herring Gull** - *Larus smithsonianus*
 27-03 1 from the observation tower, Aransas NWR.
 28-03 6 during the boat-trip, Aransas NWR.
 29-03 c 20 Laguna Atascosa NWR and 1 at Port Isabel.
 09-04 c 30 Bolivar Flats.
121. **Gull-billed Tern** - *Sterna nilotica*
 27-03 1 near Port Lavaca.
 28-03 4 during the boat-trip, Aransas NWR.
 29-03 c 20 Laguna Atascosa NWR.
 30-03 1 Santa Ana NWR.
 01-04 1 Rio Grande, 2 miles south of Falcon Dam.
122. **Caspian Tern** - *Hydroprogne caspia*
 27-03 c 20 between Port Lavaca and Aransas NWR.
 28-03 c 50 during the boat-trip, Aransas NWR.
 29-03 c 15 Laguna Atascosa NWR and surrounding fields.
 31-03 8 Salineño.
 09-04 c 50 Bolivar Flats.
 10-04 1 between Winnie and Houston.
123. **Royal Tern** - *Thalasseus maxima*
 27-03 c 20 Aransas NWR.
 28-03 c 200 during the boat-trip, Aransas NWR.
 09-04 c 200 Bolivar Flats.
 10-04 2 Rollover Pass.
124. **Cabot's Tern** - *Thalasseus acutirostris*
 28-03 c 30 during the boat-trip, Aransas NWR. Split from Sandwich Tern *T. sandvicensis*.

125. **Least Tern** - *Sternula antillarum*
09-04 c 200 Bolivar Flats.
126. **Common Tern** - *Sterna hirundo*
28-03 1 Fulton.
127. **Forster's Tern** - *Sterna forsteri*
27-03 c 40 along the coast between Port Lavaca and Aransas NWR.
28-03 c 40 during the boat-trip, Aransas NWR.
30-03 2 Bentsen-Rio Grande Valley SP.
09-04 c 100 Bolivar Flats.
128. **Rock Dove** - *Columba livia forma domestica*
Seen almost daily.
129. **Band-tailed Pigeon** - *Patagioenas fasciata*
05-04 1 along Laguna Meadow Trail, Chisos Mountains, Big Bend NP.
130. **RED-BILLED PIGEON** - *Patagioenas flavirostris*
01-04 3 Rio Grande, 2 miles south of Falcon Dam.
131. **Inca Dove** - *Columbina inca*
27-03 4 behind the Visitor Centre of the Aransas NWR.
29-03 1 Central Boulevard, Brownsville.
31-03 3 Bentsen-Rio Grande Valley SP.
01-04 1 Zapata.
02-04 2 Kerrville.
03-04 1 Rio Grande Village, Big Bend NP.
132. **Common Ground-Dove** - *Columbina passerina*
27-03 4 behind the Visitor Centre of the Aransas NWR.
28-03 2 between Riviera and Sarita along Highway 77.
04-04 2 Cottonwood Campground, Big Bend NP.
133. **White-tipped Dove** - *Leptotila verreauxi*
29-03 4 Laguna Atascosa NWR.
 5 Sable Palm Grove Sanctuary.
30-03 c 10 Santa Ana NWR.
31-03 c 5 Bentsen-Rio Grande Valley SP.
01-04 c 5 Falcon Dam and surroundings.
 8 Salineño.
134. **Mourning Dove** - *Zenaida macroura*
The most common pigeon, seen daily in all sorts of habitats.
135. **White-winged Dove** - *Zenaida asiatica*
03-04 4 Alpine.
 6 Big Bend NP.
04-04 c 20 Big Bend NP and c 10 more on 05-04.
05-04 c 10 Davis Mountains.
06-04 c 20 Davis Mountains.

136. **Greater Roadrunner** - *Geococcyx californianus*
- | | | |
|-------|----|--|
| 29-03 | 15 | Laguna Atascosa NWR. |
| 01-04 | 1 | Lost Maples SNA, Edward's Plateau. |
| 02-04 | 1 | Dewberry Hollow, south of Kerrville, Edward's Plateau. |
| 03-04 | 1 | Rio Grande Village, Big Bend NP. |
137. **Eastern Screech Owl** - *Megascops asio*
- | | | |
|-------|---|--|
| 30-03 | 3 | (2 resting in tree-hole and 1 calling) Bentsen-Rio Grande Valley SP. |
| 31-03 | 1 | (resting in a tree) Bentsen-Rio Grande Valley SP. |
| 01-04 | 1 | (dead) Salineño. All birds observed were gray phases. |
138. **Great Horned Owl** - *Bubo virginianus*
- | | | |
|-------|---|--|
| 27-03 | 1 | at the visitor centre, Aransas NWR. |
| 31-03 | 1 | flying over the Rio Grande towards Mexico, Salineño. |
139. **FERRUGINOUS PYGMY OWL** - *Glaucidium brasilianum*
- | | | |
|-------|---|--|
| 01-04 | 1 | sitting in a tree and calling, 2 miles south of Falcon Dam along the Rio Grande.
This is the only site open to public in the USA. |
|-------|---|--|
140. **Elf Owl** - *Micrathene whitneyi*
- | | | |
|-------|---|---|
| 30-03 | 2 | in a nesting tree and later in the evening calling, Bentsen-Rio Grande Valley SP.
Thanks to a ranger who showed us the nesting tree. |
|-------|---|---|
141. **Burrowing Owl** - *Athene cunicularia*
- | | | |
|-------|---|---|
| 07-04 | 7 | along Highway 180 between Seminole and Lamesa, at milepost 267. |
|-------|---|---|
142. **Lesser Nighthawk** - *Chordeiles acutipennis*
- | | | |
|-------|------|---|
| 29-03 | 1 | Central Boulevard, Brownsville. |
| 31-03 | c 15 | Falcon Dam. |
| | c 20 | Salineño. All birds appeared just after sunset. |
143. **PAURAQUE** - *Nyctidromus albicollis*
- | | | |
|-------|------|---|
| 30-03 | c 10 | (only one seen, the others heard) Bentsen-Rio Grande Valley SP. |
| 31-03 | 2 | (only heard) Falcon Dam. |
| | 1 | (only heard) Salineño. |
144. **Common Poorwill** - *Phalaenoptilus nuttalli*
- | | | |
|-------|---|---------------------------------------|
| 30-03 | 2 | (heard) Bentsen-Rio Grande Valley SP. |
|-------|---|---------------------------------------|
145. **Chuck-will's-widow** - *Antrostomus carolinensis*
- | | | |
|-------|---|----------------------|
| 25-03 | 1 | (heard) WG Jones SF. |
|-------|---|----------------------|
146. **Chimney Swift** - *Chaetura pelagica*
- | | | |
|-------|------|---|
| 25-03 | 1 | Houston Intercontinental Airport. |
| 27-03 | c 20 | widespread between Lake Texana and the Aransas NWR. |
| 28-03 | 3 | Sarita rest-area, along Highway 77. |
| 29-03 | 3 | Laguna Atascosa NWR. |
| | 5 | Boca Chica Boulevard, Brownsville. |
| 02-04 | 3 | Kerrville, Edward's Plateau. |
| 08-04 | c 25 | widespread between Fort Worth and Winnie. |
| 09-04 | c 50 | spread over High Island, Bolivar Flats and Anahuac NWR. |
| 10-04 | c 10 | Boy Scout Woods Sanctuary, High Island. |

147. **White-throated Swift** - *Aeronautes saxatilis*
 04-04 1 Rio Grande at the Cottonwood Campground, Big Bend NP.
 05-04 8 along Laguna Meadow Trail, Chisos Mountains, Big Bend NP.
148. **BUFF-BELLIED HUMMINGBIRD** - *Amazilia yucatanensis*
 29-03 2 at a feeder of the visitor center of the Sable Palm Grove Sanctuary.
 30-03 2 where the C-Trail meets the Rio Grande, Santa Ana NWR.
149. **Ruby-throated Hummingbird** - *Archilochus colubris*
 26-03 2 between WG Jones SF and Hempstead.
 4 at the Visitor Center of the Attwater's Prairie Chicken NWR.
 1 along Farm Road 3013 near the Attwater's Prairie Chicken NWR.
 27-03 1 along Farm Road 3013 near the Attwater's Prairie Chicken NWR.
 29-03 1 Laguna Atascosa NWR
 09-04 6 Boy Scout Woods Sanctuary, High Island; same numbers here on 10-05.
150. **Black-chinned Hummingbird** - *Archilochus alexandri*
 01-04 3 Lost Maples SNA.
 02-04 2 along Dewberry Hollow, south of Kerrville, Edward's Plateau.
 1 Lost Maples SNA.
 03-04 6 Rio Grande Village, Big Bend NP.
 04-04 5 Cottonwood Campground, Big Bend NP.
 1 Rio Grande Village, Big Bend NP.
 05-04 3 Davis Mountains State Park.
151. **Broad-tailed Hummingbird** - *Selasphorus platycercus*
 05-04 2 along Laguna Meadow Trail, Chisos Mountains, Big Bend NP.
152. **GREEN KINGFISHER** - *Chloroceryle americana*
 30-03 1 Pintail Lake, Santa Ana NWR.
 01-04 2 Lost Maples SNA.
153. **RINGED KINGFISHER** - *Megaceryle torquata*
 31-03 2 Bentsen-Rio Grande Valley SP.
 3 Falcon Dam.
 4 Salineño
 01-04 2 2 miles south of Falcon Dam.
154. **Belted Kingfisher** - *Megaceryle alcyon*
 25-03 2 along Highway 45, north of Houston.
 27-03 1 along Farm Road 111, 8 miles east of Lake Texana.
 1 near Tivoli.
 28-03 2 Corpus Christi.
 31-03 1 Falcon Dam.
 02-04 1 between Lost Maples SNA and Vanderpool, Edward's Plateau.
 08-04 2 'en route' between Fort Worth and Winnie.
 09-04 8 in total at Winnie, High Island, Bolivar Peninsula and Anahuac NWR.
 10-04 1 Sandpiper Point, Bolivar Peninsula.
155. **Acorn Woodpecker** - *Melanerpes formicivorus*
 06-04 5 near the Mt. Locke McDonald Observatory, Davis Mountains.

156. **Golden-fronted Woodpecker** - *Melanerpes aurifrons*
Common in the Laguna Atascosa and the Rio Grande Valley, the most common woodpecker.
157. **Red-bellied Woodpecker** - *Melanerpes carolinus*
26-03 2 WG Jones SF.
09-04 1 Boy Scout Woods Sanctuary, High Island.
158. **Yellow-bellied Sapsucker** - *Sphyrapicus varius*
25-03 1 WG Jones SF.
09-04 1 Boy Scout Woods Sanctuary, High Island.
10-04 1 Smith Oaks Sanctuary, High Island.
159. **Ladder-backed Woodpecker** - *Picoides scalaris*
29-03 8 Laguna Atascosa NWR.
30-03 1 Santa Ana NWR.
01-04 1 Lost Maples SNA.
02-04 1 Lost Maples SNA.
03-04 2 between Alpine and Big Bend NP, along Highway 118.
04-04 3 Cottonwood Campground, Big Bend NP.
05-04 1 Limpia Creek, north-east of Fort Davis.
160. **Downy Woodpecker** - *Picoides pubescens*
26-03 1 (♂) Hempstead.
08-04 1 (♀) along Highway 45, south of Fort Worth.
161. **RED-COCKADED WOODPECKER** - *Picoides borealis*
26-03 6 WG Jones SF.
162. **Hairy Woodpecker** - *Picoides villosus*
25-03 1 WG Jones SF.
163. **Northern Flicker** - *Colaptes auratus*
03-04 1 (yellow-shafted) between Alpine and Big Bend NP, along Highway 118.
1 (red-shafted) Cottonwood Campground, Big Bend NP.
06-04 1 (red-shafted) near Madera Creek Picnic Area, Davis Mountains.
164. **Pileated Woodpecker** - *Dryocopus pileatus*
25-03 4 WG Jones SF.
26-03 3 WG Jones SF.
08-04 1 near Silsbee.
165. **Northern Crested Caracara** - *Caracara cheriway*
26-03 3 along Farm Road 3013, near the Attwater Prairie Chicken NWR.
27-03 8 'en route' between Sealy and the Aransas NWR.
01-04 1 between Zapata and Falcon Dam.
1 near Medina, Edward's Plateau.
08-04 1 south of Fort Worth.
166. **American Kestrel** - *Falco sparverius*
Seen daily in small numbers in different habitats.

167. **Merlin** - *Falco columbarius*
- | | | |
|-------|---|---------------------------------|
| 27-03 | 1 | near Austwell. |
| 29-03 | 1 | Laguna Atascosa NWR. |
| 03-04 | 1 | between Alpine and Big Bend NP. |
168. **RED-CROWNED AMAZON** - *Amazonia viridigenalis*
- | | | |
|-------|---|--|
| 29-03 | 2 | Central Boulevard, Brownsville, also there on 30-03. |
|-------|---|--|
169. **Yellow-headed Amazon** - *Amazonia oratrix*
- | | | |
|-------|---|--|
| 29-03 | 1 | Central Boulevard, Brownsville. Although it breeds very close in North-eastern Mexico the Yellow-headed Amazon is considered introduced/escaped. |
|-------|---|--|
170. **Eastern Phoebe** - *Sayornis phoebe*
- | | | |
|-------|---|---|
| 02-04 | 1 | (only seen by Max and Oscar) Lost Maples SNA. |
|-------|---|---|
171. **Black Phoebe** - *Sayornis nigricans*
- | | | |
|-------|---|--|
| 31-03 | 1 | Falcon Dam. |
| 03-04 | 2 | (nesting) Rio Grande Village, Big Bend NP. |
| 04-04 | 2 | Cottonwood Campground, Big Bend NP. |
| | 2 | Nature Trail, Rio Grande Village, Big Bend NP. |
| 05-04 | 2 | at a pond a few miles south-east of Fort Davis |
172. **Say's Phoebe** - *Sayornis saya*
- | | | |
|-------|---|--|
| 03-04 | 2 | at the western entrance of Big Bend NP. |
| 04-04 | 1 | between Alpine and Big Bend NP, along Highway 118. |
| | 1 | The Basin, Big Bend NP. |
| 05-04 | 2 | The Basin, Big Bend NP. |
| 07-04 | 2 | The Indian Lodge, Davis Mountains SP. |
173. **Olive-sided Flycatcher** - *Contopus borealis*
- | | | |
|-------|---|---|
| 27-03 | 2 | (heard singing: 'quick-THREE-beers') at the observation tower of Aransas NWR. |
|-------|---|---|
174. **Western Wood-Pewee** - *Contopus sordidulus*
- | | | |
|-------|---|-------------------------------------|
| 04-04 | 1 | Cottonwood Campground, Big Bend NP. |
|-------|---|-------------------------------------|
175. **Acadian Flycatcher** - *Empidonax virescens*
- | | | |
|-------|---|---|
| 09-04 | 1 | Boy Scout Woods Sanctuary, High Island. |
|-------|---|---|
176. **Vermilion Flycatcher** - *Pyrocephalus rubinus*
- | | | |
|-------|------|--|
| 02-04 | 1 | Kerrville, Edward's Plateau. |
| | 1 | at the entrance of Lost Maples SNA. |
| 03-04 | 6 | Rio Grande Village, Big Bend NP. |
| | 4 | Cottonwood Campground, Big Bend NP. |
| 04-04 | c 15 | spread over Rio Grande Village and Cottonwood Campground, Big Bend NP. |
| 05-04 | 2 | at a pond a few miles south-east of Fort Davis. |
177. **GREAT KISKADEE** - *Pitangus sulphuratus*
- | | | |
|-------|------|---------------------------------|
| 29-03 | 1 | Laguna Heights. |
| 30-03 | 2 | Central Boulevard, Brownsville. |
| | c 10 | Santa Ana NWR. |
| 31-03 | c 5 | Bentsen-Rio Grande Valley SP. |
| 01-04 | 2 | Falcon Dam. |

178. **TROPICAL KINGBIRD** - *Tyrannus melancholicus*
 30-03 1 behind the (former) tennis court of Country Club Road, Brownsville. Identified by its call, a nervous pip-pip-pip-pip. A pair was reportedly present for several weeks, according to the excellent Rio Grande Rare Bird Alert.
179. **COUCH'S KINGBIRD** - *Tyrannus couchii*
 29-03 1 Sable Palm Grove Sanctuary, Brownsville.
 30-03 c 10 Santa Ana NWR.
 31-03 c 10 Bentsen-Rio Grande Valley SP.
 c 10 Falcon Dam area; same numbers here on 01-04.
180. **Western Kingbird** - *Tyrannus verticalis*
 04-04 1 Cottonwood Campground, Big Bend NP.
181. **Scissor-tailed Flycatcher** - *Tyrannus forficatus*
 Common, seen daily between 26-03 and 03-04 with up to c 100 birds (01-04) and less common between 07-04 and 10-04, with a maximum of 5 birds. Typically, most of the birds observed were on telegraph wires.
182. **Eastern Kingbird** - *Tyrannus tyrannus*
 25-03 1 WG Jones SF.
 09-04 c 30 in total, Bolivar Peninsula and Anahuac NWR.
 10-04 5 Bolivar Peninsula.
183. **Ash-throated Flycatcher** - *Myiarchus cinerascens*
 03-04 2 Rio Grande Village, Big Bend NP.
 1 Cottonwood Campground, Big Bend NP.
 04-04 2 Cottonwood Campground, Big Bend NP.
 2 Rio Grande Village, Big Bend NP.
184. **Great Crested Flycatcher** - *Myiarchus crinitus*
 09-04 1 Boy Scout Woods Sanctuary, High Island.
185. **Brown-crested Flycatcher** - *Myiarchus tyrannulus*
 01-04 1 2 miles south of Falcon Dam.
 1 (this species or *M. cinerascens*) Falcon Dam.
186. **Loggerhead Shrike** - *Lanius ludovicianus*
 Common, seen daily along roadsides at telegraph-wires with numbers up to 50 birds each day.
187. **White-eyed Vireo** - *Vireo griseus*
 25-03 1 WG Jones SF; also on 26-03.
 27-03 1 along Farm Road 3013, near the Attwater Prairie Chicken NWR.
 28-03 1 during the boat-trip, Aransas NWR.
 09-04 3 Boy Scout Woods Sanctuary, High Island.
 10-04 1 Boy Scout Woods Sanctuary, High Island.
188. **Bell's Vireo** - *Vireo bellii*
 02-04 1 Kerrville, Edward's Plateau.
 2 Lost Maples SNA.
 03-04 4 Rio Grande Village, Big Bend NP.
 04-04 c 10 in total, Big Bend NP.

189. **BLACK-CAPPED VIREO** - *Vireo atricapillus*
 02-04 2 (1 heard, 1 very well seen) Lost Maples SNA.
190. **Blue-headed Vireo** - *Vireo solitarius*
 31-03 1 Trailer Loop, Bentsen-Rio Grande Valley SP.
 09-04 3 Boy Scout Woods Sanctuary, High Island.
 10-04 1 Boy Scout Woods Sanctuary, High Island.
191. **Hutton's Vireo** - *Vireo huttoni*
 05-04 3 along the Laguna Meadow Trail, Chisos Mountains, Big Bend NP.
192. **Red-eyed Vireo** - *Vireo olivaceus*
 09-04 1 Boy Scout Woods Sanctuary, High Island.
 10-04 3 Smith Oaks Sanctuary, High Island.
193. **GREEN JAY** - *Cyanocorax luxuosus*
 28-03 2 Sarita rest-area.
 30-03 4 Santa Ana NWR.
 1 Bentsen-Rio Grande Valley SP.
 01-04 c 10 Falcon Dam area.
 6 Salineño.
194. **Blue Jay** - *Cyanocitta cristata*
 25-03 2 WG Jones SF.
 26-03 c 5 WG Jones SF.
 09-04 4 Boy Scout Woods Sanctuary, High Island.
 10-04 2 Boy Scout Woods Sanctuary, High Island.
195. **MEXICAN JAY** - *Aphelocoma wollweberi*
 05-04 c 20 along the Laguna Meadow Trail, Chisos Mountains, Big Bend NP.
196. **Woodhouse's Scrub Jay** - *Aphelocoma woodhouseii*
 01-04 1 Lost Maples SNA, Edward's Plateau.
 02-04 3 Dewberry Hollow, south of Kerrville.
 05-04 c 5 Davis Mountains.
197. **American Crow** - *Corvus brachyrhynchos*
 Common, seen daily in the north and east and along the Gulf Coast up to Corpus Christi. Not seen along the whole Rio Grande, in New Mexico and in the north-east of Texas.
198. **Northern Raven** - *Corvus corax*
 Only seen with certainty along Highway 10 to Alpine (1 bird) in Lost Maples SNA on the Edward's Plateau (2 birds). Other large corvids seen from the car were either this bird or the Chihuahuan Raven.
199. **Chihuahuan Raven** - *Corvus cryptoleucus*
 Common along the whole Rio Grande from Brownsville, New Mexico and the north-east of Texas.
200. **Cedar Waxwing** - *Bombycilla garrulus*
 25-03 5 WG Jones SF.
 26-03 c 50 WG Jones SF.
 c 50 between WG Jones SF and Hempstead.
 30-03 c 20 Country Club Drive, Brownsville.

- | | | |
|-------|------|--|
| 01-04 | c 10 | Kerrville, Edward's Plateau. |
| | 4 | Dewberry Hollow, south of Kerrville, Edward's Plateau. |
| 05-04 | c 20 | Limpia Creek, 3 miles north-east of Fort Davis. |
| | c 40 | at a pond a few miles south of Fort Davis. |
| 08-04 | c 10 | at the Best Western Motel, Fort Worth. |
| 09-04 | c 30 | Boy Scout Woods Sanctuary, High Island. |
| 10-04 | c 2 | Boy Scout Woods Sanctuary, High Island. |
201. **Phainopepla** - *Phainopepla nitens*
- | | | |
|-------|---|---|
| 04-04 | 1 | The Basin, Chisos Mountains, Big Bend NP. |
|-------|---|---|
202. **TUFTED TITMOUSE** - *Baeolophus bicolor*
- | | | |
|-------|------|--|
| 25-03 | 4 | WG Jones SF |
| 26-03 | c 10 | WG Jones SF. |
| | 2 | Attwater Prairie Chicken NWR. |
| 08-04 | 1 | along Highway 45, south of Fort Worth. |
| 09-04 | c 5 | High Island; also on 10-04. |
203. **Black-crested Titmouse** - *Baeolophus atricristatus*
- | | | |
|-------|------|---|
| 28-03 | 2 | Sarita rest-area, along Highway 77. |
| 29-03 | 1 | Laguna Atascosa NWR. |
| 01-04 | 2 | Falcon Dam area. |
| | 1 | Salineño. |
| 02-04 | c 10 | West Spice road, south of Kerrville. |
| | 3 | Lost Maples SNA. |
| 05-04 | 3 | Laguna Meadow Trail, Chisos Mountains, Big Bend NP. |
| | 2 | Davis Mountains SP. |
204. **CAROLINA CHICKADEE** - *Poecile carolinensis*
- | | | |
|-------|------|--|
| 25-03 | c 10 | WG Jones SF. |
| 26-03 | c 5 | WG Jones SF. |
| | 3 | Attwater Prairie Chicken NWR. |
| 01-04 | 2 | Lost Maples SNA. |
| 02-04 | 2 | Kerrville. |
| 08-04 | 4 | along Highway 45, south of Fort Worth. |
205. **Verdin** - *Auriparus flaviceps*
- | | | |
|-------|---|---|
| 03-04 | 2 | c 10 miles before the western entrance of Big Bend NP, along Highway 118. |
| 04-04 | 1 | at the start of the Nature Trail, Rio Grande Village, Big Bend NP. |
206. **Horned Lark** - *Eremophila alpestris*
- | | | |
|-------|------|---|
| 29-03 | 1 | Laguna Atascosa NWR. |
| | 6 | Brownsville City Dump. |
| 05-04 | c 60 | on the land of Mrs. Espy, along Highway 166, Davis Mountains. |
| 06-04 | c 10 | along Highway 17, Davis Mountains. |
| | c 5 | between Lake Balmorhea and Hobbs. |
207. **Tree Swallow** - *Tachycineta bicolor*
- | | | |
|-------|------|---------------------------------------|
| 27-03 | c 50 | between Sealy and Aransas NWR. |
| 28-03 | c 50 | between Fulton and Sarita. |
| 29-03 | c 50 | Laguna Atascosa NWR and surroundings. |
| 04-04 | 1 | Cottonwood Campground, Big Bend NP. |

- 08-04 3 along Fire Tower Road, near Silsbee.
 09-04 3 Boy Scout Woods Sanctuary, High Island.
208. **Violet-green Swallow** - *Tachycineta thalassina*
 04-04 1 The Basin, Chisos Mountains, Big Bend NP
209. **Purple Martin** - *Progne subis*
 29-03 2 San Benito.
 02-04 1 Kerrville, Edward's Plateau.
 09-04 c 30 Boy Scout Woods Sanctuary, High Island.
 10-04 c 10 High Island.
210. **Northern Rough-winged Swallow** - *Stelgidopteryx serripennis*
 Common, seen almost daily in the north and east, the Gulf Coast and along the Rio Grande.
211. **Barn Swallow** - *Hirundo rustica*
 Common, seen daily, being the most common swallow.
212. **American Cliff Swallow** - *Hirundo pyrrhonota*
 26-03 c 50 between WG Jones SF and Hempstead.
 c 30 along Farm Road 3013, near the Attwater Prairie Chicken NWR.
 27-03 c 100 near Tivoli.
 01-04 c 20 between Zapata and San Ygnacio.
 02-04 c 10 between Kerrville and Lost Maples SNA, Edward's Plateau.
 03-04 2 Rio Grande Village, Big Bend NP.
 04-04 c 5 Cottonwood Campground, Big Bend NP.
 07-04 c 200 in total along Highway 20.
 08-04 3 Village Creek Wastewater Treatment Plant, Fort Worth.
 c 200 in total between Fort Worth and Silsbee.
213. **Cave Swallow** - *Hirundo fulva*
 28-03 2 San Bernardo Creek, just north of Kingsville
 31-03 c 40 Falcon Dam
 01-04 c 40 under a bridge between Zapata and San Ygnacio
214. **American Bushtit** - *Psaltriparus minimus*
 05-04 5 along the Laguna Meadow Trail, Chisos Mountains, Big Bend NP.
215. **Ruby-crowned Kinglet** - *Regulus satrapa*
 25-03 1 WG Jones SF.
 26-03 c 10 WG Jones SF.
 27-03 1 at the parking lot of the observation tower, Aransas NWR.
 01-04 1 Lost Maples SNA.
 03-04 2 Cottonwood Campground, Big Bend NP; also on 04-04.
 08-04 1 Sundew Trail near Silsbee, Big Thicket.
 09-04 1 Boy Scout Woods Sanctuary, High Island, also on 10-04.
216. **Cactus Wren** - *Campylorhynchus brunneicapillus*
 01-04 1 or 2 Salineño.
 03-04 5 between Alpine and Big Bend NP.
 1 Visitor Center, Big Bend NP.
 04-04 5 in total, Big Bend NP.

- | | | |
|-------|---|---|
| 05-04 | 2 | The Basin, Chisos Mountains, Big Bend NP. |
| 06-04 | 2 | Indian Lodge, Davis Mountains NP. |
217. **Rock Wren** - *Salpinctes obsoletus*
- | | | |
|-------|---|--|
| 03-04 | 2 | Nature Trail, Rio Grande Village, Big Bend NP. |
| 04-04 | 1 | Nature Trail, Rio Grande Village, Big Bend NP. |
| | 1 | The Basin, Chisos Mountains, Big Bend NP. |
218. **Canyon Wren** - *Catherpes mexicanus*
- | | | |
|-------|---|---|
| 01-04 | 2 | Lost Maples SNA. |
| 02-04 | 4 | Lost Maples SNA. |
| 03-04 | 1 | Rio Grande Village, Big Bend NP. |
| | 2 | Nature Trail, Rio Grande Village, Big Bend NP. |
| 04-04 | 1 | at the Mexican side of the Rio Grande, Big Bend NP. |
| 05-04 | 2 | along the Laguna Meadow Trail, Chisos Mountains, Big Bend NP. |
219. **Sedge Wren** - *Cistothorus stellaris*
- | | | |
|-------|---|---|
| 28-03 | 1 | (heard only) during the boat-trip, Aransas NWR. |
|-------|---|---|
220. **Bewick's Wren** - *Thryomanes bewickii*
- | | | |
|-------|---|--|
| 01-04 | 1 | (red phase) Falcon Dam area. |
| 02-04 | 1 | (red phase) Dewberry Hollow, south of Kerrville, Edward's Plateau. |
| 05-04 | 1 | (gray phase) Davis Mountains SP. |
221. **CAROLINA WREN** - *Thryothorus ludovicianus*
- | | | |
|-------|--------|--|
| 26-03 | 2 | WG Jones SF. |
| | 1 or 2 | at the headquarters of the Attwater Prairie Chicken NWR. |
| 28-03 | 1 | during the boat-trip, Aransas NWR. |
| 29-03 | 1 | Sable Palm Grove Sanctuary. |
| 01-04 | 1 | Lost Maples SNA. |
| 02-04 | 1 | Dewberry Hollow, south of Kerrville, Edward's Plateau. |
| | 1 | Lost Maples SNA. |
| 03-04 | 1 | Rio Grande Village, Big Bend NP. |
| 08-04 | 1 | Sundew Trail north of Silsbee, Big Thicket. |
| 09-04 | 1 | Boy Scout Woods Sanctuary, High Island. |
| 10-04 | 1 | Smith Oaks Sanctuary, High Island. |
222. **Winter Wren** - *Troglodytes hiemalis*
- | | | |
|-------|---|------------------|
| 01-04 | 1 | Lost Maples SNA. |
|-------|---|------------------|
223. **House Wren** - *Troglodytes aedon*
- | | | |
|-------|---|----------------------------------|
| 26-03 | 1 | WG Jones SF. |
| 28-03 | 1 | Goose Island SRA. |
| 30-03 | 1 | Country Club Drive, Brownsville. |
224. **Blue-grey Gnatcatcher** - *Polioptila caerulea*
- | | | |
|-------|------|--|
| 25-03 | 1 | WG Jones SF. |
| 26-03 | 2 | at the headquarters of the Attwater Prairie Chicken NWR. |
| 30-03 | c 5 | Santa Ana NWR. |
| 31-03 | 3 | Bentsen-Rio Grande Valley SP. |
| | 1 | Falcon Dam. |
| 01-04 | c 10 | Falcon Dam. |

- | | | |
|-------|------|--|
| 02-04 | c 20 | in total, Dewberry Hollow and Lost Maples SNA. |
| 09-04 | 8 | Boy Scout Woods Sanctuary, High Island. |
| 10-04 | c 5 | Boy Scout Woods Sanctuary and Smith Oaks Sanctuary, High Island. |
225. **Black-tailed Gnatcatcher** - *Polioptila melanura*
- | | | |
|-------|---|-------------------------------------|
| 03-04 | 1 | Cottonwood Campground, Big Bend NP. |
| 04-04 | 2 | Cottonwood Campground, Big Bend NP. |
226. **BROWN-HEADED NUTHATCH** - *Sitta pusilla*
- | | | |
|-------|---|--------------|
| 25-03 | 4 | WG Jones SF. |
|-------|---|--------------|
227. **Brown Creeper** - *Certhia americana*
- | | | |
|-------|--------|--------------|
| 25-03 | 1 | WG Jones SF. |
| 26-03 | 2 or 3 | WG Jones SF. |
228. **Gray Catbird** - *Dumetella carolinensis*
- | | | |
|-------|---|---|
| 09-04 | 2 | Boy Scout Woods Sanctuary, High Island. |
| 10-04 | 1 | Boy Scout Woods Sanctuary, High Island. |
229. **Northern Mockingbird** - *Mimus polyglottus*
Very common, seen daily in every habitat where there were small bushes available.
230. **Brown Thrasher** - *Toxostoma rufum*
- | | | |
|-------|---|--|
| 26-03 | 2 | near Magnolia |
| 09-04 | 4 | Boy Scout Woods Sanctuary, High Island |
231. **LONG-BILLED THRASHER** - *Toxostoma longirostre*
- | | | |
|-------|---|---|
| 30-03 | 1 | at the entrance of the Bentsen-Rio Grande Valley SP |
| 31-03 | 1 | Trailer Loop, Bentsen-Rio Grande Valley SP. |
| 01-04 | 1 | Falcon Dam area. |
232. **Curve-billed Thrasher** - *Toxostoma curvirostre*
- | | | |
|-------|---|------------------------------|
| 29-03 | 7 | Laguna Atascosa NWR. |
| 03-04 | 1 | Visitor Center, Big Bend NP. |
| 05-04 | 1 | Davis Mountains SP. |
233. **Crissal Thrasher** - *Toxostoma dorsale*
- | | | |
|-------|---|---|
| 05-04 | 1 | along the Laguna Meadow Trail, Chisos Mountains, Big Bend NP. |
|-------|---|---|
234. **Common Starling** - *Sturnus vulgaris*
Very common.
235. **Eastern Bluebird** - *Sialia sialis*
- | | | |
|-------|---|---|
| 26-03 | 1 | (♂) Magnolia. |
| 01-04 | 2 | (♂, ♀) between Utopia and Vanderpool, Edward's Plateau. |
| 08-04 | 1 | (♀) near Silsbee, Big Thicket. |
236. **Western Bluebird** - *Sialia mexicana*
- | | | |
|-------|---|---|
| 06-04 | 5 | along Highway 118, Davis Mountains. |
| | 4 | Madera Canyon Picnic Ground, Davis Mountains. |

237. **Townsend's Solitaire** - *Myadestes townsendi*
02-04 1 Lost Maples SNA.
238. **Hermit Thrush** - *Catharus ustulatus*
05-04 4 along the Laguna Meadow Trail, Chisos Mountains, Big Bend NP.
239. **Wood Thrush** - *Hylocichla mustelina*
09-04 5 Boy Scout Woods Sanctuary, High Island.
10-04 2 Boy Scout Woods Sanctuary, High Island.
240. **American Robin** - *Turdus migratorius*
26-03 c 20 WG Jones SF.
08-04 3 Village Creek Wastewater Treatment Plant, Fort Worth.
241. **House Sparrow** - *Passer domesticus*
Common, typically at MacDonald's drive-throughs!
242. **Buff-bellied Pipit** - *Anthus rubescens*
04-04 3 Cottonwood Campground, Big Bend NP.
06-04 1 Lake Balmorhea.
08-04 1 Village Creek Wastewater Treatment Plant, Fort Worth.
243. **House Finch** - *Carpodacus mexicanus*
02-04 5 Kerrville, Edward's Plateau.
 2 Dewberry Hollow, Kerrville, Edward's Plateau.
03-04 c 10 between Alpine and Maverick, along Highway 118.
04-04 3 Visitor Center, Big Bend NP.
07-04 3 rest-area of Caprock, New Mexico.
244. **American Goldfinch** - *Spinus tristis*
30-03 7 Pintail Lake, Santa Ana NWR.
245. **Lesser Goldfinch** - *Spinus psaltria*
01-04 1 (♂ black-backed form) Kerrville, Edward's Plateau.
03-04 2 Cottonwood Campground, Big Bend NP.
246. **Pine Siskin** - *Spinus pinus*
25-03 c 10 WG Jones SF; same numbers on 26-03.
02-04 2 Kerrville, Edward's Plateau.
03-04 2 Rio Grande Village, Big Bend NP.
04-04 1 in the Rio Grande, Cottonwood Campground, Big Bend NP.
247. **Lark Bunting** - *Calamospiza melanocorys*
02-04 c 15 along Highway 67 before Alpine.
03-04 c 10 between Alpine and Maverick, along Highway 118.
04-04 c 30 between Alpine and Maverick, along Highway 118.
 1 near Panther Junction, Big Bend NP.
06-04 c 200 in total between Fort Davis and Roswell (New Mexico).
07-04 c 300 in total between Caprock and Hobbs, New Mexico.
248. **Lincoln's Sparrow** - *Melospiza lincolnii*
29-03 1 Sable Palm Grove Sanctuary.

- | | | |
|-------|---|---|
| 31-03 | 1 | Falcon Dam area. |
| 01-04 | 3 | Falcon Dam area. |
| | 1 | Salineño. |
| 02-04 | 5 | Kerrville, Edward's Plateau. |
| 03-04 | 3 | Rio Grande Village, Big Bend NP. |
| 04-04 | 1 | The Basin, Chisos Mountains, Big Bend NP. |
249. **Swamp Sparrow** - *Melospiza georgina*
- | | | |
|-------|---|--------------|
| 09-04 | 5 | Anahuac NWR. |
|-------|---|--------------|
250. **White-crowned Sparrow** - *Zonotrichia leucophrys*
- | | | |
|-------|---|---|
| 26-03 | 1 | at the Visitor Center of the Attwater Prairie Chicken NWR. |
| 03-04 | 3 | Alpine |
| 04-04 | 3 | Cottonwood Campground, Big Bend NP. |
| 06-04 | 4 | rest-area along Highway 10, at the county limits of Pecos County. |
251. **White-throated Sparrow** - *Zonotrichia albicollis*
- | | | |
|-------|------|--|
| 25-03 | 1 | WG Jones SF. |
| 26-03 | 2 | WG Jones SF. |
| 08-04 | c 10 | Picnic Area along Highway 45, south of Fort Worth. |
| 09-04 | 2 | Boy Scout Woods Sanctuary, High Island. |
252. **Dark-eyed Junco** - *Junco hyemalis*
- | | | |
|-------|------|---|
| 04-04 | 3 | The Basin, Chisos Mountains, Big Bend NP. |
| 05-04 | c 10 | along the Laguna Meadow Trail, Chisos Mountains, Big Bend NP. |
| 06-04 | c 15 | (with 1 brown-backed bird, Oregon-subspec?) Davis Mountains. |
253. **Savannah Sparrow** - *Passerculus sandwichensis*
- The most common sparrow, especially in the north and east, with up to 100 birds on a single day, typically along grassy roadsides.
254. **Seaside Sparrow** - *Ammodramus maritimus*
- | | | |
|-------|-------|------------------------------------|
| 28-03 | ca.10 | during the boat-trip, Aransas NWR. |
|-------|-------|------------------------------------|
255. **Nelson's / Saltmarsh Sparrow** - *Ammodramus nelsoni/caudacuta*
- | | | |
|-------|---|------------------------------------|
| 28-03 | 1 | during the boat-trip, Aransas NWR. |
|-------|---|------------------------------------|
- It was not known at the time of the sighting that these species would be split into two species.
256. **Grasshopper Sparrow** - *Ammodramus savannarum*
- | | | |
|-------|---|---------------------------------|
| 28-03 | 2 | Cape Valero, south of Rockport. |
|-------|---|---------------------------------|
257. **Chipping Sparrow** - *Spizella passerina*
- | | | |
|-------|-------|--|
| 26-03 | c 10 | WG Jones SF. |
| | 1 | at the Visitor Center of the Attwater Prairie Chicken NWR. |
| 28-03 | 5 | Sarita rest-area, along Highway 77. |
| 01-04 | 6 | Salineño. |
| 02-04 | 4 | Dewberry Hollow, south of Kerrville, Edward's Plateau. |
| | 1 | along Highway 67 on our way to Alpine. |
| 03-04 | c 100 | between Alpine and Maverick, along Highway 118. |
| 04-04 | c 100 | in total, between Alpine and Maverick and in Big Bend NP. |
| 06-04 | c 50 | in total along Highway 17, Davis Mountains. |

258. **Field Sparrow** - *Spizella pusilla*
- | | | |
|-------|---|--|
| 02-04 | 1 | Dewberry Hollow, south of Kerrville, Edward's Plateau. |
| | 1 | before Alpine, along Highway 67. |
| 04-04 | 1 | Cottonwood Campground, Big Bend NP. |
259. **Clay-colored Sparrow** - *Spizella pallida*
- | | | |
|-------|---|--|
| 30-03 | 4 | Pintail Lake, Santa Ana NWR. |
| 07-04 | 1 | at the rest-area of Abilene, along Highway 20. |
260. **Brewer's Sparrow** - *Spizella breweri*
- | | | |
|-------|---|---|
| 07-04 | 1 | between Tatum and McDonald, New Mexico. |
|-------|---|---|
261. **Vesper Sparrow** - *Poecetes gramineus*
- | | | |
|-------|---|--|
| 29-03 | 1 | Laguna Atascosa NWR. |
| 03-04 | 3 | Rio Grande Village, Big Bend NP. |
| 04-04 | 1 | at the start of the Nature Trail, Rio Grande Village, Big Bend NP. |
| 06-04 | 3 | along Highway 17, Davis Mountains. |
262. **Lark Sparrow** - *Chondestes grammacus*
- | | | |
|-------|---|--|
| 29-03 | 1 | Los Fresnios. |
| 01-04 | 1 | Lost Maples SNA. |
| 04-04 | 1 | Nature Trail, Rio Grande Village, Big Bend NP. |
| 06-04 | 1 | along Highway 17, Davis Mountains. |
263. **Black-throated Sparrow** - *Amphispiza bilineata*
- | | | |
|-------|------|---|
| 02-04 | 1 | before Alpine, along Highway 67. |
| 03-04 | 3 | between Alpine and Maverick, along Highway 118. |
| | 1 | Rio Grande Village, Big Bend NP. |
| | 1 | Nature Trail, Rio Grande Village, Big Bend NP. |
| 04-04 | c 10 | widespread at Big Bend NP. |
264. **Cassin's Sparrow** - *Peucaea aestivalis*
- | | | |
|-------|---|--|
| 29-03 | 1 | (♂ singing) Laguna Atascosa NWR. Identified by song and flank-stripes. |
|-------|---|--|
265. **Rufous-crowned Sparrow** - *Aimophila ruficeps*
- | | | |
|-------|---|---|
| 01-04 | 1 | Lost Maples SNA. |
| 04-04 | 1 | The Basin, Chisos Mountains, Big Bend NP. |
| 05-04 | 4 | along the Laguna Meadow Trail, Chisos Mountains, Big Bend NP. |
266. **Green-tailed Towhee** - *Pipilo chlorurus*
- | | | |
|-------|---|-------------------------------------|
| 03-04 | 1 | Cottonwood Campground, Big Bend NP. |
|-------|---|-------------------------------------|
267. **Spotted Towhee** - *Pipilo maculatus*
- | | | |
|-------|------|---|
| 02-04 | 2 | Dewberry Hollow, south of Kerrville, Edward's Plateau. |
| 05-04 | c 20 | along the Laguna Meadow Trail, Chisos Mountains, Big Bend NP. |
268. **Canyon Towhee** - *Pipilo fuscus*
- | | | |
|-------|---|--|
| 03-04 | 1 | Alpine. |
| | 3 | between Alpine and Big Bend NP, along Highway 118. |
| 04-04 | 2 | The Basin, Chisos Mountains, Big Bend NP. |
| 05-04 | 3 | The Basin, Chisos Mountains, Big Bend NP. |
| | 1 | Davis Mountains SP. |

269. **OLIVE SPARROW** - *Arremonops rufivirgatus*
- | | | |
|-------|------|---|
| 29-03 | 3 | Laguna Atascosa NWR. |
| 30-03 | c 10 | (1 seen, the others heard singing) Santa Ana NWR. |
| 31-03 | c 5 | Bentsen-Rio Grande Valley SP. |
| | 3 | Falcon Dam area. |
| 01-04 | c 5 | Falcon Dam area. |
270. **Yellow-breasted Chat** - *Icteria virens*
- | | | |
|-------|---|---|
| 04-04 | 1 | Cottonwood Campground, Big Bend NP. |
| 09-04 | 1 | Boy Scout Woods Sanctuary, High Island. |
271. **Yellow-headed Blackbird** - *Xanthocephalus xanthocephalus*
- | | | |
|-------|------|---|
| 30-03 | c 30 | in one flock migrating north, Bentsen-Rio Grande Valley SP. |
| 08-04 | 1 | (♂) Village Creek Wastewater Treatment Plant, Fort Worth. |
272. **Western Meadowlark** - *Sturnella neglecta*
- | | | |
|-------|---|---|
| 07-04 | 1 | between Tatum and McDonald, New Mexico. Identified by its song. |
|-------|---|---|
273. **Eastern Meadowlark** - *Sturnella magna*
Common, seen daily along roadsides and open grassy areas in Texas and New Mexico. The birds in the Davis Mountains were brighter and their song was little bit different (Lilian's subspecies?).
274. **Scott's Oriole** - *Icterus parisorum*
- | | | |
|-------|---|--|
| 04-04 | 2 | (♂, ♀) behind the Visitor Center of the Big Bend NP. |
| 06-04 | 1 | (♂) along Highway 118, Davis Mountains. |
275. **AUDUBON'S ORIOLE** - *Icterus graduacauda*
- | | | |
|-------|---|---|
| 01-04 | 1 | at the Mexican side of the Rio Grande, south of Falcon Dam. |
| | 2 | 2 miles south of the Falcon Dam. |
276. **ALTAMIRA ORIOLE** - *Icterus gularis*
- | | | |
|-------|---|-------------------------------|
| 30-03 | 6 | Santa Ana NWR. |
| 31-03 | 2 | Bentsen-Rio Grande Valley SP. |
| 01-04 | 4 | 2 miles south of Falcon Dam. |
277. **Hooded Oriole** - *Icterus cucullatus*
- | | | |
|-------|---|--|
| 28-03 | 3 | (♂♂) Sarita rest-area, along Highway 77. |
| 03-04 | 1 | (♂) Rio Grande Village, Big Bend NP. |
| 04-04 | 2 | (♂, ♀) Cottonwood Campground, Big Bend NP. |
278. **Orchard Oriole** - *Icterus spurius*
- | | | |
|-------|--------|---|
| 09-04 | 1 or 2 | (♂) Boy Scout Woods Sanctuary, High Island. |
|-------|--------|---|
279. **Red-winged Blackbird** - *Agelaius phoeniceus*
Common, seen almost daily, sometimes in very large flocks of up to 500 birds and even 1 flock of c 500 birds near Tatum contained only females or immatures.
280. **BRONZED COWBIRD** - *Molothrus aeneus*
- | | | |
|-------|------|----------------------|
| 29-03 | c 20 | Laguna Atascosa NWR. |
| | c 10 | Laguna Heights. |
| 30-03 | c 20 | Santa Ana NWR. |

281. **Brown-headed Cowbird** - *Molothrus ater*
 25-03 c 10 WG Jones SF.
 01-04 3 Lost Maples SNA.
 08-04 c 50 widespread between Fort Worth and Winnie.
 09-04 c 30 between Bolivar and High Island.
282. **Brewer's Blackbird** - *Euphagus cyanocephalus*
 27-03 5 along Farm Road 111, 8 miles east of Lake Texana.
 06-04 c 30 rest-area along Highway 10, at the county limits of County Pecos.
 07-04 c 50 between Hobbs and Seminole.
283. **Common Grackle** - *Quiscalus quiscula*
 Seen almost daily in good numbers of up to 50 birds, especially in the north and east.
284. **BOAT-TAILED GRACKLE** - *Quiscalus major*
 09-04 1 High Island.
 c 50 Anahuac NWR.
 10-04 c 30 between High Island and Rollover Pass.
285. **Great-tailed Grackle** - *Quiscalus mexicanus*
 Seen almost daily with numbers of up to 500 birds, especially in the south along the Rio Grande and in the north.
286. **Ovenbird** - *Seiurus aurocapillus*
 09-04 1 Boy Scout Woods Sanctuary, High Island.
287. **Worm-eating Warbler** - *Helmitheros vermivorus*
 09-04 6 Boy Scout Woods Sanctuary, High Island.
 10-04 1 Boy Scout Woods Sanctuary, High Island.
288. **Louisiana Waterthrush** - *Parkesia motacilla*
 09-04 3 Boy Scout Woods Sanctuary, High Island.
289. **Northern Waterthrush** - *Parkesia noveboracensis*
 09-04 1 Boy Scout Woods Sanctuary, High Island.
290. **Blue-winged Warbler** - *Vermivora cyanoptera*
 28-03 1 Sarita rest-area, along Highway 77.
 09-04 3 Boy Scout Woods Sanctuary, High Island.
 10-04 1 Boy Scout Woods Sanctuary, High Island.
 1 Smith Oaks Sanctuary, High Island.
291. **Black-and-white Warbler** - *Mniotilta varia*
 26-03 1 WG Jones SF.
 28-03 1 Sarita rest-area, along Highway 77.
 09-04 4 Boy Scout Woods Sanctuary, High Island.
 10-04 1 Boy Scout Woods Sanctuary, High Island.
292. **Tennessee Warbler** - *Leiothyplis peregrina*
 09-04 c 5 Boy Scout Woods Sanctuary, High Island.
 10-04 1 Smith Oaks Sanctuary, High Island.

293. **Orange-crowned Warbler** - *Leiothyplis celata*
 25-03 1 WG Jones SF.
294. **Lucy's Warbler** - *Leiothyplis luciae*
 04-04 3 (♂♂ singing and well seen) Cottonwood Campground, Big Bend NP.
295. **Nashville Warbler** - *Leiothyplis ruficapilla*
 01-04 1 along the so-called shortcut, Falcon Dam area.
 02-04 2 Lost Maples SNA.
296. **Kentucky Warbler** - *Geothlypis formosus*
 09-04 5 Boy Scout Woods Sanctuary, High Island.
297. **Common Yellowthroat** - *Geothlypis trichas*
 29-03 6 Sable Palm Grove Sanctuary.
 30-03 1 Country Club Drive, Brownsville.
 2 Pintail Lake, Santa Ana NWR.
 01-04 3 Falcon Dam.
 04-04 3 Cottonwood Campground, Big Bend NP.
 07-04 2 between Hobbs and Seminole.
 09-04 1 Boy Scout Woods Sanctuary, High Island.
 10-04 1 between Winnie and High Island.
298. **Hooded Warbler** - *Setophaga citrina*
 28-03 1 Sarita rest-area, along Highway 77.
 09-04 7 Boy Scout Woods Sanctuary, High Island.
 10-04 2 Boy Scout Woods Sanctuary, High Island.
 Nearly all warblers are put under the genus name *Setophaga*, leaving the lovely names like *Wilsonia* or *Dendroica* in oblivion.
299. **American Redstart** - *Setophaga ruticilla*
 09-04 1 (♂) Boy Scout Woods Sanctuary, High Island.
300. **Cerulean Warbler** - *Setophaga cerulea*
 09-04 1 Boy Scout Woods Sanctuary, High Island; same bird(?) also on 10-04.
301. **Northern Parula** - *Setophaga americana*
 28-03 2 (♂, ♀) Sarita rest-area, along Highway 77.
 29-03 1 Sable Palm Grove Sanctuary.
302. **TROPICAL PARULA** - *Setophaga pitiayumi*
 31-03 1 (♂ singing and very well seen) Eagle Lake, Trailer Loop, Bentsen-Rio Grande Valley SP. Other locations this year for this very beautiful bird were the Sarita rest-area and the non-accessible King's Ranch.
303. **American Yellow Warbler** - *Setophaga aestiva*
 09-04 1 (♀) Boy Scout Woods Sanctuary, High Island.
304. **Pine Warbler** - *Setophaga pinus*
 08-04 c 10 Sundew Trail near Silsbee, Big Thicket.

305. **Myrtle Warbler** - *Setophaga coronata*
Seen almost daily, being the most common warbler in the northeast with numbers up to 20 birds daily.
306. **Audubon's Warbler** - *Setophaga auduboni*
Seen almost daily, being the most common warbler in the south and west.
307. **GOLDEN-CHEEKED WARBLER** - *Setophaga chrysoparia*
01-04 2 (♂) Lost Maples SNA.
02-04 c 10 (with 1 ♀) Lost Maples SNA.
308. **Black-throated Green Warbler** - *Setophaga virens*
04-04 1 (♀) at the start of the Nature Trail, Rio Grande Village, Big Bend NP.
309. **Wilson's Warbler** - *Cardellina pusilla*.
03-04 1 Cottonwood Campground, Big Bend NP.
04-04 1 at the start of the Nature Trail, Rio Grande Village, Big Bend NP.
310. **Summer Tanager** - *Piranga rubra*
03-04 2 (♂, ♀) Rio Grande Village, Big Bend NP; also on 04-04.
09-04 1 (♂) Boy Scout Woods Sanctuary, High Island.
10-04 1 (♀) this species or the next, Boy Scout Woods Sanctuary, High Island.
311. **Scarlet Tanager** - *Piranga olivacea*
10-04 2 (♂♂) Smith Oaks Sanctuary, High Island.
312. **Northern Cardinal** - *Cardinalis cardinalis*
Common, seen daily in forested areas, with up to 20 birds each day.
313. **PYRRHULOXIA** - *Cardinalis sinuatus*
31-03 1 between Salineño and Falcon Dam.
01-04 2 south of Zapata.
02-04 1 near Alpine.
03-04 2 between Alpine and Big Bend NP along Highway 118.
06-04 2 along Highway 118, Davis Mountains.
314. **Indigo Bunting** - *Passerina cyanea*
29-03 1 Osprey Outlook, Laguna Atascosa NWR.
09-04 2 Boy Scout Woods Sanctuary, High Island.
315. **MORELLET'S SEEDEATER** (aka **White-collared Seedeater**) - *Sporophila morelleti sharpei*
01-04 4 (female-types) at the end of Washington Street, San Ygnacio.
S. morelleti (including ssp *sharpei*, *mutanda*) is split from *S. torqueola* based on morphology, deep genetic divergence and polyphyly ([Mason et al. 2018](#)). Handbook of the Birds of the World ([HBW](#)) uses the name **Sharpe's Seedeater** for this taxon and **White-collared Seedeater** for *S. m. morelleti*.